



Lancaster &
Morecambe
College

Celebrating 200 Years of Learning



Full Time,
T Level &
Apprenticeship Courses

COLLEGE GUIDE

2024/25





How to apply

STEP 1 Apply on our website lmc.ac.uk
Look for the pink apply button

Apply ✓

You'll need to create an account first.

STEP 2 Choose your appointment time.

STEP 3 After your interview, you can accept or decline your offer via your account.

If you need any assistance at your interview, contact our Learning Support Team 01524 521571 or see the [Learning Support](#) section on our website.



Lancaster &
Morecambe
College

Celebrating 200 Years of Learning

Welcome

I'm delighted to introduce our new **College Guide for 2024/25**, which is designed to provide you with an insight into what our extraordinary College has to offer.

The number of opportunities available today following school are varied and it's important that you have all the information you need to make the best choices for your future. We know that for some young people, the option to stay on at school can be the right choice, especially if they wish to study A Levels and follow a more traditional academic route.

At LMC, we're focused on preparing learners for real careers, independence and positive progression when they graduate from College. We support our students to be self-directed and highly motivated, making them more employable and ready to progress onto higher study.

Our well-established links with over 700 employers and work-related technical expertise means our curriculum is closely aligned with the needs of businesses, ensuring our students are well prepared for their future careers or continuing to study at higher levels.

I look forward to welcoming you on campus at one of our **Open Days** and, hopefully as a student at LMC in the near future.

Daniel Braithwaite, Principal

200 Years of LMC

In July 2024 Lancaster & Morecambe College will celebrate **200 years of continuous technical education** provision in the local area. The roots of LMC can be traced directly back to the founding of the **Library and Mechanics' Institute** in **1824**, which, after several moves, eventually settled in the Storey Institute, on Meeting House Lane. We are justifiably proud of these roots, and how the College has since continued to evolve a high standard of technical education relevant to our local employers and community, and to the continually changing times they have seen.

We moved to the current site on **Morecambe Road in 1963**, and the new College was officially opened by **HRH The Duke of Edinburgh**. We are planning a range of celebratory events throughout 2024 to mark our bicentenary and will be asking LMC alumni to share their stories and photos from across the years.

Keep an eye on our social media platforms for more updates.





The Bay School of
HOSPITALITY



What's New @LMC?

Bay School of Hospitality

In September 2023, we launched our new **Bay School of Hospitality** with the exciting news that we have partnered with the award-winning team at **Gilpin**, one of the region's top destination venues.

The partnership offers LMC Catering & Hospitality students and apprentices the opportunity to take part in a range of masterclasses and cooking demos with Gilpin's team of chefs, whilst working toward achieving the prestigious **Gilpin Ambassador's Award**.

"We're incredibly proud to be able to support the upcoming talent in the hospitality and catering industries, and it's even better that we can work to retain some of the amazing homegrown talent the North West has to offer. The partnership with LMC has been bubbling away for a few months, and we're excited to be able to officially launch our work together. We already have our first employee from the College too, so it's talent development in action and at its best."

Gilpin's Head of People and Culture, Helen Tappenden

As part of the launch, we opened our new **The Bay Restaurant@LMC**, which is open to the public and provides a real work environment for our Bay School of Hospitality students to develop essential skills, both in the kitchen and front of house.



LANCASHIRE & CUMBRIA

I	N	S	T	I	T	U	T	E	O	F
T	E	C	H	N	O	L	O	G	Y	

NEW COURSES delivered in partnership with the Institute of Technology

This year, we have joined with partner colleges from across the region to offer a range of **higher-level technical courses**, as part of the **Lancashire & Cumbria Institute of Technology (IoT)**.

As part of a national programme, the IoT will drive economic growth whilst providing learners with the knowledge and skills required across a range of **STEM occupations** (Science, Technology, Engineering, and Mathematics) **and industries**.

The provision available at LMC will include **HNC (Level 4) Diploma in Creative Media Production**, **HNC (Level 4) Diploma in Engineering** and **T Level in Engineering**.

'Careers Champions' for a Greener World

Earlier this year, the College became recognised as '**Careers Champions**' by the **Careers & Enterprise Company** (CEC) for our innovative approach to embedding sustainability and environmentalism across our curriculum.

The CEC, which is the national body for careers education in England, awarded the College the accolade after attending a **Low Carbon Industry Day** which was organised in collaboration with the Lancashire Careers Hub. The event saw almost 100 Year 9 pupils from 6 Lancashire schools take part in a range of workshops and sessions around green careers on campus, and included on-site visits to leading employers across the region. Filming took place during the event and the resulting FE Connect video will be shared as a beacon of good practice for schools and colleges across the country.

The College is a founding partner of the **Morecambe Bay Curriculum**, a place-based initiative which was inspired by **Eden Project Morecambe** and aims to provide the green skills, knowledge and behaviours required by local and national employers. We have created a **Renewable Energy Demonstration Hub**, featuring miniature hydrogen cars and wind turbines, and installed a **360 immersive Virtual Reality (VR)** system where we show a powerful film outlining the impact of climate change and sea level rises on the local area. All of these resources are used as part of the careers sessions we deliver to schools and within the College's curriculum.

The CEC were impressed with the innovative approach LMC has taken when developing its careers strategy.

"The leadership team at LMC has created a careers programme that gives the next generation an appreciation of the planet, providing insight into how young people can pursue careers that positively contribute to sustainability within their own community. It places them at the forefront of environmentalism within Further Education."





Coming soon to LMC...

Keep an eye on our website for updates on a range of new courses and initiatives including:

Winter Gardens Young Creatives

We are partnering with the iconic **Winter Gardens in Morecambe**, to offer an exciting new programme for learners who wish to develop their skills and progress within the Creative Industries.

T Levels in Engineering & Animal Management

For more information about these exciting new courses, see pages 68 and 72.

Refurbishment of our Science Laboratories

Our upgraded science labs and teaching spaces will open in **September 2024** and will be used for teaching our **Animal Management** and **Health T Levels**, and our new **Forensic Science** Level 3 course.



Find us on social @LMCollege






Sustainable LMC

In 2022, we opened our new **Sustainable Energy Hub** and **Renewable Energy Demonstration Centre** on campus, as part of our continued commitment to promoting sustainable careers across the region. The Hub, which features a state-of-the-art, fully-immersive **Virtual Reality suite**, a new **CAD workshop** and a range of **Green Careers resources** provides our students with enhanced learning opportunities.

We also use the space to promote awareness of **green technologies and STEM-related activities** for local primary and secondary schools.

This year, we have set up a network of **Sustainable Ambassadors**, with students from across the whole College working alongside tutors to help develop new green initiatives on campus and within the local community.

For more information: lmc.ac.uk/sustainability

The background image shows two young women sitting inside a white igloo. They are looking out through the opening of the igloo at a beach scene. The beach has a wooden fence, a purple sign, and waves in the distance. The entire scene is overlaid with a semi-transparent blue filter.

“ The new Igloo at LMC is a fun and interesting way to learn. It transforms the classroom learning, as you can really experience what it’s like working in different job roles and industries. ”

**Grace,
Travel & Tourism student**

Why Choose LMC?



We're a **GOOD** College



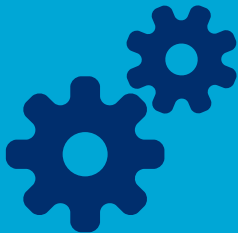
We have qualified, experienced tutors



Free or discounted return bus service



Free breakfast on arrival at College



Industry links to over 700 local employers



International opportunities

We're Here To Help

We know that starting College can feel like a huge step but we are here to help you settle in and find your feet. Our friendly staff will offer you advice and support; from the moment you first apply for a course, right through to your final day at LMC.

Based within **The Hex Student & Learning Centre**, the Student Engagement team can help with **financial support, course information, careers guidance, UCAS applications, CVs and resources** – you don't need an appointment, just pop in for a chat at anytime.

Learning Support

Our experienced Learning Support team will work with you to agree where and how reasonable adjustments can be made to help you succeed in your studies.

Safeguarding

Our **Pastoral Mentors** work closely with the curriculum teams to ensure all of our learners are able to access advice across a wide range of health, welfare and safeguarding issues.

Equality, Diversity & Inclusion

This is embedded across everything we do, to ensure that all members of the College community have an equal opportunity to maximise their potential and are equally valued and treated with respect.

For more information: [**lmc.ac.uk/support**](https://lmc.ac.uk/support)

Student VOICE

Have Your Voice Heard

We want to hear **YOUR voice**, so that we can help to make life at LMC even more rewarding for the whole College community.

There are lots of ways for you to get involved:

Class Reps, Student Conference, Student Ambassadors, Volunteering and Social Action opportunities.

For more information: lmc.ac.uk/studentvoice





Free Bus Service

We know that many people who would like to study with us live some distance away from Lancaster & Morecambe College; that's why we offer **Full Time students daily return transport** during term time.

Even if you don't live on a College bus route, you may still qualify for **free or discounted travel** to LMC.

For more information: lmc.ac.uk/bus





Financial Support

We want to ensure all learners are aware of our **Student Money team**, who are here to help identify and access any financial support you may be entitled to whilst you are studying at College. They can advise you on all financial matters including; the **Learner Support Fund (LSF)** and **16-18 Vulnerable Bursary** and may also be able to help you with travel expenses, course costs such as uniform, educational visits and equipment, childcare fees and lunches. Just call into The Hex to speak with them or email **studentmoney@lmc.ac.uk**

- Learner Support Fund
- 16-18 Vulnerable Bursary
- Childcare
- Travel Costs
- Breakfasts & Lunches
- Advanced Learner Loans

Visit: **lmc.ac.uk/support**



Careers Advice & Guidance CEIAG

Our **Engagement Team** is here to provide all of our learners and apprentices with **information and advice** on courses **entry requirements and course and exam fees**; from your first visit to campus for an Open Day, right through to you completing your course and graduating from College, they will support you to find the right information for your individual needs and future plans.

Our **Careers Programme** has been designed to meet the needs of all of our learners, through a range of structured tutorials, sector-specific events and targeted workshops and sessions. Our tutors are all experts within their industry and embed their knowledge and experience into the courses.

“ The careers programme is delivered at various stages throughout the year and a key feature is how it has been skilfully woven into the curriculum and classroom sessions. Learners described becoming increasingly confident, improving their personal development skills, developing employability skills, gaining employment, improving mental health, and progressing into a positive destination because of the embedded CEIAG and the nature of the service. ”

Matrix June 2023

Facilities

As we continuously develop the campus to meet our sustainable goals, all of our facilities are at the centre of improvements. We are fortunate to have an **open green campus** with many outdoor areas and sports pitches, which you can explore on all of our **Open Days** throughout the year.

The Igloo Immersive 360° VR Suite

Our new Sustainable Energy Hub includes an immersive 360° Virtual Reality suite to enhance your learning experience. Each subject area will have access to this fantastic facility, whether you're an Engineering student seeing what it's like to be on top of a wind turbine, or a student in Travel & Tourism researching popular holiday destinations around the world.

The Salon

Hairstyling & Beauty Therapy

The Salon

Our fantastic, modern salon offers **hair and beauty treatments** of all kinds and is open to the public and students at great prices. The Salon is an oasis of tranquility helping you unwind away from the bustling campus.

The Lounge

Food · Shop · Social Space

The Lounge

The Lounge is your social space to meet with friends, relax and enjoy excellent, varied, affordable hot and cold food options or snacks. If you arrive between 8:30am and 9:15am, you can choose **porridge, toast or fruit and either tea or coffee for FREE** to start your day in the best way possible.

The Hexagon

Student & Learning Centre

The Hexagon Student & Learning Centre

At the heart of our campus, The Hex is a quiet space for independent study and home to our helpful **Student Engagement team** and **Pastoral Mentors**. You can access laptops, PCs and other College resources, as well as gain careers guidance and student money advice, all in one safe space.

Information for Parents & Guardians

We're focused on preparing our students for real careers, independence, and positive progression in the future, with a set of skills and experience that sets them apart from the competition.

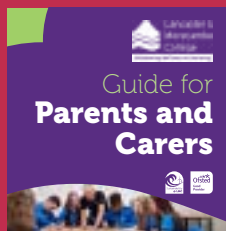
94% of LMC students progress onto university, employment, or further study upon completion of their course, and we're proud to have strong links with local Higher Education providers and employers across the region.

Learners and apprentices work well together with their employers, peers and their tutors. Consequently, they effectively develop skills such as confidence, resilience, patience, communication and independence. Learners develop an understanding of living in a diverse community and appreciate and understand each other's differences.

An Ofsted rated **'GOOD'** College, 2020

For more information: lmc.ac.uk/parents-guardians

**Download our
Guide for Parents and Carers**





International Work Placements

Whichever course you choose, you'll have the opportunity to take part in work experience visits within the UK and potentially abroad!

We've been lucky to secure funding to continue our European trips through the **Turing Scheme**, allowing us to send students to countries such as **Bulgaria, Spain, Italy and Slovakia**. In 2023, we extended this offer to include fully-funded work placements in the **Caribbean, New York and Canada!**

Not all of our trips are funded, but if you are eligible for financial support, you will not have to pay to take part - please see the Student Money section for more information

For more information: [**lmc.ac.uk/international**](https://lmc.ac.uk/international)

“

The trips really helped me develop confidence, learn key skills and experience new opportunities, and I have now started a full-time job supporting students to get involved in community projects and volunteering.

”



Year 14 Offer

If you are currently in **Year 13** and studying Level 3 or A-Level qualifications, but you are unsure of what your next steps should be, this will give you the opportunity to study an **additional Level 3 course for one year**, fully-funded, across a range of subjects.

You can explore a whole new subject area, - **Esports, Creative Digital Media, Engineering, Uniformed Services, Art & Design, Travel & Tourism**, or continue on your chosen path to gain valuable skills and experience.

Depending upon the course, you could also gain an extra **32-84 UCAS points** to support your application to Higher Education. To be eligible, you must have completed your Level 3 course or A-Level qualification and be under 19 years old on 31 August 2024.

Industrial Placements

Industry Work Placements are an innovative way to enable you to develop the key skills and knowledge required to get ahead in your career, and **all of our Full Time learners** have the opportunity to take part. Depending on which course you choose, you could spend up to **45 days on placement**, gaining crucial skills, building confidence and developing knowledge of a variety of different roles and responsibilities within the workplace.



ut the importance of effective careers
ve to deliver the best in employment
ence, training and knowledge



14-16

& Home-Educated Provision

In specialist cases, we are able to offer learning opportunities and individualised programmes of study to pupils aged 14-16, including young people who are home-educated.

14-16 School Referrals can be made throughout the academic year and must come from the pupil's current school, educational establishment or social services or the local authority, who must agree to fund the placement. LMC cannot accept private funding. Options include: Childcare, Animal Studies, Digital Technology and each pathway will have Maths & English embedded within the curriculum.

Young people who are currently **home-educated** may be eligible to attend LMC on a part-time basis, to study a vocational specialism and enhance their home learning. Our usual entry criteria will apply and will be used to assess the learner's suitability, including an assessment on whether we feel the young person can thrive in the College environment.

All enquiries should be made direct to Carole Clare, our 14-16 Coordinator.

For more information: lmc.ac.uk/14-16

Entry Requirements

Most courses we offer have certain entry requirements you will need to meet before studying with us. All courses require **an interest in the subject and a willingness to learn**, but some may have additional requirements such as a portfolio of work; exact entry requirements will be detailed on the specific course page. Although you may meet our entry requirements, course offers are decided after your interview with the subject tutor.

If you're a school leaver and haven't received your GCSE grades yet, we'll base our course offer on your predicted grades. If you don't meet the entry requirements, you'll either start on a lower level course or our advice team will assist you with finding the right course.





Level 5

HND

From 64 UCAS points dependent on course PLUS grade C/4 or higher in both GCSE Maths and English, or Advanced Apprenticeship, or equivalent experience.

Level 4

HNC

From 64 UCAS points dependent on course PLUS grade C/4 or higher in both GCSE Maths and English, or Advanced Apprenticeship, or equivalent experience.

Level 3

A Level, T Level

5 GCSEs at grade C/4 or higher including Maths and English OR a Level 2 related qualification PLUS grade C/4 or higher in both Maths and English

Level 2

GCSE

4 GCSEs at grade D/3 or higher including Maths or English OR a Level 1 related qualification PLUS grade D/3 or higher in Maths or English

Level 1

GCSE

3 GCSEs at grade G/1 or higher plus grade F/2 or higher in Maths or English

Entry Levels 1, 2 and 3

All Pathway courses, plus Introduction to Hair & Beauty

No formal qualification



T-LEVELS @LMC

T-Levels are new two year qualifications which offer a **blend of classroom based learning and real work experience**, giving you a head start into employment. They have been designed to give students the opportunity to develop the skills, technical knowledge and behaviours that employers look for and are **equivalent to three A Levels**. Upon completion, you can progress within your chosen career, onto a higher level Apprenticeship or into Higher Education.

The qualifications have been developed in conjunction with leading employers and education providers, and include significant work experience (a minimum of 315 hours on industrial placement) alongside a structured curriculum giving you in-depth knowledge of your chosen subject and sector.

This year, we will be adding new **T Levels in Engineering and Animal Management**, alongside our current offer of **Health, Education & Childcare and Business - Management & Administration**.

For more information: lmc.ac.uk/courses/T-Levels

1  **3**

T Level = A Levels

80/20

80% of your time in the classroom and **20%** on a relevant industry placement, gaining real work experience



Industry Inspired

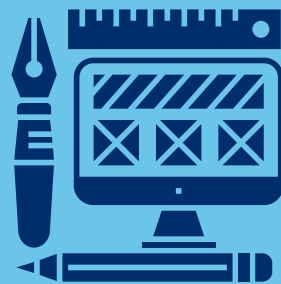
Play a key part in shaping the future of the economy



Employer Endorsed

Designed with employers to provide the skills that industry needs

Maths & English



No matter which course you take at LMC, our aim is to help you progress into your chosen career and the majority of employers now look for a minimum GCSE grade C/4 or Functional Skills Level 2 in Maths & English.

It is a UK Government requirement for all students aged 16-18 to study Maths & English alongside their vocational course, if they haven't already achieved GCSE grade 4 or Functional Skills Level 2.

At LMC, we offer two levels in each subject; **GCSE** and **Functional Skills**.

Maths

Progress Maths classes teach learners to the standard required to achieve up to a GCSE grade 3. Learners may take a Functional Skills qualification or the GCSE exams in May/June, depending on their preference and abilities.

GCSE 4/5 Maths teach learners to the standard required to achieve a GCSE grade 4 or 5 on the Foundation Paper. All learners will sit the GCSE exams in May/June. Learners with a GCSE grade 3 will be placed in these classes.

English Language

Functional Skills English classes teach learners to the standard required to achieve up to a Functional Skills Level 2. Functional Skills English qualifications are very different to English Language GCSE exams, as they focus more on English skills for the workplace.

GCSE English classes teach learners to the standard required to achieve a GCSE grade 4 or 5, and the exam papers allow all grades up to Grade 9 to be achieved. All learners will sit the GCSE exams in May/June. Learners with a GCSE grade 3 will be placed in these classes.

For more information: lmc.ac.uk/english-maths



Maths & English comparison table

FUNCTIONAL SKILLS LEVEL	4-9 GCSE GRADES	A-C GCSE GRADES
	5	C/B
	4	C
Level 2	3	D
Level 1		E
Entry Level 3	1	F/G
Entry Level 2		
Entry Level 1		

Ready for the world of work?

If you feel ready to progress into the world of work, then an Apprenticeship is the perfect choice for you.

Apprenticeships are REAL jobs with real employers, allowing you to develop the relevant skills, knowledge and behaviours, whilst earning a salary and gaining a qualification in your chosen sector.

Did you know?

93% of apprentices remain employed upon completion of their course

(source: Amazing Apprenticeships)

We offer apprenticeships across a wide range of industries, including;

Accountancy • Engineering • Property Maintenance
Business Support with Marketing • Early Years
Hospitality & Catering • Beauty Therapy... *and many more*

“ With an Apprenticeship, you are learning all the time. It gives you fantastic experience in the working world and the hands-on training gives you a real chance to put your skills into practice. An Apprenticeship really helps you to gain confidence in a working environment. ”

Supported Internship with the Royal Lancaster Infirmary



In September 2022, we welcomed our first cohort of interns onto our Supported Internship. This innovative course gives young people (18-24) with an Education, Health & Care Plan (EHCP) the opportunity to transition from education into employment, by offering a range of supported work placements at the RLI in Lancaster. Alongside the work experience, learners take part in employability training sessions and develop independence and life skills. See pages 84-85 for details.



We will be holding an
Apprenticeship Employer Event
on **Tuesday 6 February 2024**

where you can meet potential employers and find out more about the vacancies and courses available.

Visit: lmc.ac.uk/apprenticeships

Our Courses...

Access to Higher Education	page 36
Art & Design	page 40
Beauty Therapy	page 44
Business	page 48
Child Education	page 54
Creative Digital Media & Sound	page 60
Digital Technology	page 64
Eden Land-Based & Animal Studies	page 66
Energy, Engineering & Construction	page 70
Foundation Education	page 82
Supported Internships	page 84
Hairdressing	page 86
Health, Care and Forensic Science	page 90
Hospitality & Catering	page 96
Public Services	page 102
Sport	page 106
Travel & Tourism	page 110







Access to Higher Education



The Access Diploma is specifically designed for people aged 19 years and over who want to progress onto university. Perhaps you've taken a break from education due to other commitments but have always dreamed of pursuing a particular career. Whatever your situation, the Access Diploma offers you the opportunity to gain a qualification that could open the doors to university for you.

Proud to work with:



Industry links:

Progression opportunities Past students from the Access to HE course have progressed to universities such as:

Lancaster University • University of Cumbria • University of Central Lancashire
Edge Hill University & more

Sustainability



- In the Access department, we utilise electronic submission, marking and feedback of assessed work to reduce paperwork and printing. We also always interview our new students on Teams to reduce car travel.



Ascentis Excellence Awards

This year, one of our Access to HE students, Danny Stackhouse, was nominated by his tutors for the National Access to HE Excellence Award via Ascentis and was chosen amongst all entries as the Runner Up for the Outstanding Commitment to Study Award.

"The Access to HE course helped me develop my skillset particularly in time keeping, communication, team work and problem solving; all useful skills which I will carry with me into my degree course at university."

Danny Stackhouse, Access to HE

“The Access to HE course got me back into studying again and I learnt how to write academically after 10 years without studying.

The tutor was amazing, she was so supportive with assignments but also with my university application. I am now studying midwifery at the University of Central Lancashire.

”

Bethany Blundell
Access to HE



Progression opportunities

Access to HE will prepare you to progress onto a Higher Education course, whether that's a HNC, HND, or a course at university. Past students have gone on to study various degree level courses including:

- Primary Teaching
- Nursing, Midwifery or Social Work
- Paramedic Science
- Psychology
- Occupational Therapy
- Counselling or Psychotherapy

Funding your course

If you're aged 19-23 and don't have a full Level 3 qualification, you may be able to study the Access Diploma for free. If you do have to pay fees, Advanced Learner Loans could be available to fund course fees.

If you undertake an Access Diploma and then go on to complete a university degree course, the outstanding balance of the Advanced Learner Loan is written off. Consequently, the course could be free.

Full Time Courses

See page 26/27 for entry requirements

Access to HE

Level 3 • 1 year

The adult alternative to A Levels for ambitious adults who aspire to progress to university or improve their career prospects.

Previous students have progressed into various careers, including:

- **Nursing and Health Professions:**
Adult Nurse, Mental Health Nurse, Midwife, Radiographer, Occupational Therapist, Physiotherapist and Paramedic.
- **Teaching:**
Primary School Teacher, Learning Support Worker, Teaching Assistant and Special Needs Education Worker.
- **Social Work:**
Social Worker, Counsellor, Probation Worker, Youth Worker and Welfare Officer.
- **Higher Education:**
Degree options include for example: Biological Science, Business, Psychology, Humanities and Social Sciences.

Additional entry requirements:

A range of evidence may be considered when assessing an individual's potential to study an Access Diploma, for example; their life skills, previous employment, prior achievements and professional qualifications.

The general expectation, however, is that a student will:

- Have good Level 2 skills reflecting ability equal to 5 GCSEs at grade C/4 or above, or any equivalent professional qualification; and
- Completion of the initial assessment to a satisfactory level.

The offer of a place will be determined by the following three factors:

- The student's performance at interview;
- The successful completion of the assessment; and
- The consideration of prior achievements and/or qualifications.

Different universities and courses have different entry requirements. It is the student's responsibility to check that these would be met when applying for an Access to HE Diploma. This could include subject specific GCSE grades and relevant experience.

Looking for a Part Time course?

If you are interested in a part time course, we also offer:

- **Access Level 2 - Health and Social Care Professions**
- **Biology GCSE**

For further information lmc.ac.uk/part-time/access

Level 3

University





Art & Design



An Art & Design course at LMC gives you access to fantastic industry standard facilities, surrounded by a team of designers and artists as tutors. Our students work with industry specialists in the local community and produce exciting portfolios of creative work, which demonstrate a wide set of skills. We encourage our students to be really ambitious about their future careers by applying to highly prestigious universities.

Proud to work with:



Industry insight...

A world of possibilities: Our students produce creative work, which allows them to build exciting portfolios and demonstrate a wide set of skills. We encourage our students to be ambitious about their future careers by applying to highly prestigious universities.

Sustainability



- Students work on projects using recycled materials and explore themes linked directly to the environment, climate change and sustainability, working with partners such as Lancaster University and ICT Reverse.



“

Whether you think your future is as a photographer, film-maker, game or web designer, or you are interested in graphics, illustration, fine art, furniture or fashion, we can start you on that career pathway.

”

John Lambert
Head of Art & Design



“

Each year, students from Visual & Creative Studies display their work in their End of Year Show, which is open to the public.

”

Progression opportunities

On completion of an Art & Design course at LMC, many students choose to progress onto a higher level course or a Higher Education course within College, such as the Art & Design HNC/ HND. Alternatively, some students choose to go to university.

Students may also start work in the industry in a variety of roles such as:

- Illustrator
- Fine Artist
- Fashion Designer

Industry placements

On our creative courses, students undertake live briefs and have the opportunity to complete an industry placement. In previous years, students have worked with Digital Advantage to gain experience of working in a pop-up creative design agency. More recently, our students have been awarded a Culture Co-op Creative Commission, which links young people to themselves, others, and creative practices.

Full Time Courses

See page 26/27 for entry requirements

Art & Design

Level 2 • 1 year

An introduction to the world of art and design, the course is developed to support students who would benefit from a more practical approach to learning, providing them with the transferable skills, knowledge and self-confidence required to progress to further education in art and design and/or employment within the creative industries.

Art & Design

Level 3 • 2 years

Suitable for those wishing to pursue a career in the creative industries, this course covers a broad range of specialist areas in art and design including media, techniques, and a variety of practical skills to help them identify their creative strengths and develop a project using critical and contextual awareness.

Art & Design Foundation Diploma

Level 3/4 • 1 year

This is an intensive one year course exploring a spectrum of design specialisms and builds a strong and diverse portfolio. The emphasis of the course is on experimentation and challenging preconceptions and is the perfect bridge to Higher Education.

Art Practice HNC

Level 4 • 1 year

Art Practice HNC Level 4 offers students a broad introduction and awareness of the key aspects of the creative industries sector through four core units; Professional Development, Contextual Studies, Individual Project, and Techniques and Processes. This effectively builds underpinning core skills gained in research, self-study, directed study and workplace scenarios.

Art Practice HND

Level 5 • 1 year

Art Practice HND Level 5 allows students to develop a sound understanding of the principles in their 'specialist pathway' of study. Students will learn to evaluate varied approaches to problem solving, effectively performing in their chosen field with the required qualities for employment in the sector.

Additional entry requirements:

- A minimum of 64 UCAS points, PLUS GCSE Maths & English at grade C/4 or higher, and have completed the HNC in Art Practice or similar.

Level 2

Level 3

Level 4

Level 5





Beauty Therapy



Studying Beauty Therapy at LMC will give you access to our industry standard facility, The Salon, plus a team of highly experienced and specialist tutors. Through their extensive knowledge, you'll learn the skills and techniques needed to establish a career in the Beauty Therapy industry. If you choose to progress through the qualification levels, you'll gain confidence in your skills and knowledge and begin to develop your individual creative talent.

Proud to work with:



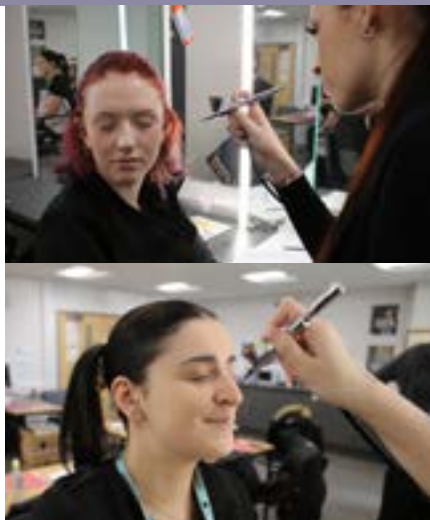
Industry insight...

Self-employment opportunities Many of our tutors are also self-employed beauty therapists, running their own businesses outside of College. With this industry insight, they give our students a look into the world of work and share tips and tricks for them to follow in their footsteps if they choose to.

Sustainability



- We have swapped our regular make-up applicators and cotton buds for sustainable bamboo alternatives, which are biodegradable and contain no plastic.



In the pursuit of perfection, students learnt about Airbrushing

During National Careers Week in March 2023 our Beauty Therapy students got hands on with another technique used in the industry, Airbrush Make-Up application with Airbase Make-Up.

They learnt about the methods of colour mixing and matching, skin preparation and client consultations. Afterwards they had the opportunity to practice on each other, creating a natural glowy make-up using foundation, bronzer, blusher and highlighter.

“

Watching my students grow and develop their ideas and skillsets week on week is a really exciting part of my role, particularly when I can see them challenging themselves to get creative and try out new and different ideas.

”

Sophie Hodgson
Beauty Therapy tutor



Progression opportunities

On completion of a Beauty Therapy course at LMC, many students choose to progress onto employment or self-employment, and may work across the country or internationally. Progression in the workplace can lead to management roles and, after experience, your career may lead to teaching or training others.

There are many exciting career opportunities in the industry, including:

- Beauty Consultant
- Salon Manager

Industry placements

Students on a Beauty Therapy course can take part in industry placements with local employers in the hair and beauty industry; this could include a beauty salon, hair salon, or a make-up counter.

Our students regularly visit local schools to manage the pupils' hair and make-up for dance and drama productions. Working on live clients throughout your studies is a great addition to your CV whilst being a student.

Full Time Courses and Apprenticeships

See page 26/27 for entry requirements

Hair & Beauty Introduction

Level 1 • 1 year

Entry Level 3/Level 1 • 1 year

This course offers an introduction to the exciting and prosperous careers available in Hairdressing & Beauty Therapy. You will gain knowledge and new skills in a variety of basic Hairdressing & Beauty Therapy services. The Entry Level 3 course is designed for students without qualifications, and can be discussed at interview.

Beauty Therapy

Level 2 • 1 year

This course offers the opportunity to learn the skills necessary for employment in the Beauty Therapy profession. You will learn techniques which are in demand and on trend, with insight from employers in the Beauty Therapy industry.

Beauty Therapy Apprenticeship

Level 2 • 1 year

This course includes both theory and practical based delivery and assessments. Completed in College one day per week, and in salon four days per week, you will learn waxing, hand and nail treatments, facial treatments, eyelash and eyebrow treatments, make-up application and basic massage treatment.

Beauty Therapy

Level 3 • 12-15 months

You will focus on advanced treatments, theory elements of business promotions, relevant health and safety, and advanced treatment techniques in the Beauty industry. You'll spend time gaining experience in LMC's real work environment, The Salon, and develop your customer care and communication skills, preparing you for future employment.

Additional entry requirements:

- Level 2 qualification in Beauty Therapy

Beauty Therapy Apprenticeship

Level 3 • 18 months

This qualification is designed for those who wish to specialise in advanced treatments from manual therapies such as advanced massage to technical therapies such as face and body treatments. The advanced beauty therapist will design and implement bespoke treatments for clients, work independently and have the potential to supervise others.

Theatrical & Media Make-up

Level 3 • 1 year

Aimed at individuals who want to work within professional make-up or hair departments of TV, film, or theatre production companies, this course equips you with the knowledge required to progress onto university courses in Beauty Therapy.

Level 1

Level 2

Level 3

Employment



Preparing for a tan

- Have a patch test. ...
- Buff away dry skin. ...
- Wax or shave ahead of your treatment. ...
- Moisturise thoroughly the day before. ...
- Rinse off all products before. ...
- Opt for loose cotton and jersey fabrics. ...
- Take your own clothes with you. ...
- Avoid nail polish to your fingernails and toes before.

Looking for a Part Time course?

Beauty Guild Courses

As well as progression into the Beauty industry, LMC provides numerous Beauty Guild Accredited Courses for those qualified professionals who are working towards a regulated qualification in Beauty Therapy. Courses include:

Gel Polish • Lash Lift & Tint • E-file Brow Lamination • Ear Candling

We also offer

**Laser and Intense Pulsed Light (IPL) Treatments VTCT
Level 4 Certificate**





Business



As a Business student at Lancaster & Morecambe College, you'll learn the knowledge, skills and behaviours needed to progress into skilled employment or higher-level technical training or study in the business sector. Understand business context, learn project work and change management, discuss business behaviours and follow quality and compliance policies.

Proud to work with:



Industry insight...

F Edmondson and Sons are a local logistics company who are taking one of our business students on work placement. Whilst on placement with the company, the student will develop customer service, problem solving, management and communication skills in preparation to progress to employment or higher education.

Sustainability



- The College runs various Business related courses through The Employer Hub to offer guidance and support in areas including Managing Businesses Response to Environmental Challenges and more.



Business students complete work placements in Italy

This summer, a group of Business students arrived in Italy for a 2 week international work placement. After some initial sight seeing around Rome, they dived straight into their work.

One project they were involved in included a visit to the local Chamber of Commerce to find out about the current business/tourism scene.

The group were able to present their ideas to the Chamber of Commerce on how to develop/improve the popularity of Pescara as a holiday destination in the wider global community.

“ The business studies course had a wide range of job roles that I could go into. As I was unsure what I wanted to do, this course gave me many different options from accountancy to marketing.

Emily Leeming-Bowles

Emily finished her Business Studies course at LMC and is now completing a Digital Marketing Apprenticeship and loving it.



Progression opportunities

Following the completion of a Business course at LMC, many students choose to progress onto a higher level course, relevant Apprenticeship, or a Higher Education course at LMC or further afield at university.

There are many exciting career opportunities in the Business industry, including:

- Events Manager
- Digital Marketer
- Accountant

Industry placements

All students gain work experience throughout their course with supportive and inspiring employers, helping to enhance their employability skills and further their knowledge in their chosen area of interest. Many students have utilised their industry placements to gain employment and volunteering opportunities, as well as references for future applications within their career.

T Levels & Apprenticeships

See page 26/27 for entry requirements

T-LEVELS

T Level - Management & Administration

Level 3 • 2 years

This qualification allows you to gain an understanding of what is needed to work within an administrative or managerial role. T Levels are designed to deliver a high-quality level of knowledge about the sector, as well as the occupational skills required to enter the industry. Topics covered include Business Context, People, Quality Compliance, Project and Change Management. To gain a practical understanding of business, you will complete 315 hours of industrial placement throughout the course. The T Level prepares you for the world of work as well as providing significant preparation for study at Higher Education in a range of relevant disciplines, as the T Level is equivalent to 3 A Levels.

Customer Service Practitioner Apprenticeship

Level 2 • 15 months

This Apprenticeship develops excellent customer service skills and behaviours, as well as product and service knowledge when delivering to your customers. You will provide service in line with the organisation's standards and strategy, within appropriate regulatory requirements. Your customer interactions may cover a wide range of situations and can include; face-to-face, telephone, post, email, text and social media.

Looking for a Part Time course?

If you are interested in a part time course, we also offer:

- AAT Accounting Levels 2/3
- People Practice (CIPD) - Level 3

For further information lmc.ac.uk/part-time/business

Level 2

Level 3

Level 4

Level 5

Business Support Apprenticeship

Level 3 • 18 months

You can choose from seven different options when applying for this qualification:

- **Business Support**
- **Business Support with Marketing**
- **Business Support with Digital Marketing**
- **Business Support with HR**
- **Business Support with Finance**
- **Business Support with Management**
- **Business Support with Sustainability**

The Business Support Level 3 Apprenticeship typically lasts 18 months, with 80% of the time spent focusing on your job role and the remaining 20% dedicated to off-the-job training. During this time, you will focus on developing the skills, knowledge and behaviours of a Business Support Assistant, working both independently and as part of a team within an organisation. Your duties will include developing, implementing and improving business services.

In addition to these hands-on experiences, all Business Support apprentices will delve into core business topics that are crucial for success in any industry. You will also have the opportunity to choose a particular pathway that best aligns with your personal interests and goals. This pathway will provide you with the opportunity to gain valuable experience in your chosen business field, as well as develop bespoke knowledge, skills and behaviours that will set you apart from other candidates in the job market.

“ I love introducing new ways of working and keeping up with relevant trends to improve the course.

I also really enjoy the supportive environment that we create for our students. We work closely with other staff members to support our students academically as well as look after their wellbeing too.

”

Amy Huntington
Business Administration
Apprenticeship Tutor



Apprenticeships

See page 26/27 for entry requirements



Team Leader Apprenticeship

Level 3 • 18 months

As part of the Leadership & Management Academy, this Apprenticeship is accredited by the Chartered Management Institute (CMI). There are various areas of study explored in a challenging, informative, and fun way, including business planning, strategy, building high performance teams, communication in the workplace and organisational psychology.

Operations/ Departmental Manager Higher Apprenticeship

Level 5 • 21 months

As part of the Leadership & Management Academy, this Apprenticeship is accredited by the Chartered Management Institute (CMI). The areas of study are theoretical and build on the skills, knowledge and behaviours needed to effectively lead and manage in the current business climate.

Areas of study include operational planning and management, leadership and management theories, managing high performance teams, with an emphasis on application to your role and organisation.



Level 2

Level 3

Level 4

Level 5



Accounts Assistant Apprenticeship

Level 2 • 15 months

This Apprenticeship will focus on developing your skills in maintaining an efficient and accurate finance function within a business. The Accounts or Finance Assistant is responsible for assisting the team of accountants with junior accounting duties.

Assistant Accountant Apprenticeship

Level 3 • 18 months

This Apprenticeship provides support within a finance function of an organisation. Part of your role will involve assisting in financial activities, such as data entry to month-end management accounts and year-end financial statements. In addition, you may be involved in regulatory financial requirements such as the completion of VAT returns or assisting in the preparation of tax computations.

Additional entry requirements:

- A Level 2 qualification in Accountancy or relevant industry experience, to be discussed at interview stage.

Professional Accounting & Taxation Technician Higher Apprenticeship

Level 4 • 18 months

This Apprenticeship will cover drafting financial statements, managing budgets and evaluating financial performance, as well as optional specialist units including business tax, personal tax, external auditing and credit management, and cash and treasury management. These are taught sessions on campus, one day a week, which are then assessed via online exams.

Additional entry requirements:

- A Level 3 qualification in Accountancy or relevant industry experience, to be discussed at interview stage.

“

Here at Lancaster & Morecambe College, we offer a great start to your career in Accountancy. Behind every great business is a fantastic Accountant! AAT qualifications are highly valued and they can really push you to achieve great things in your career. The whole team at LMC are dedicated and excited about giving you the best possible start in your new journey!

”

Denise Almond
Accountancy Tutor



Child Education

Choose your future

Whilst studying Child Education at LMC, you'll work with a team of specialist tutors who provide excellent teaching in the knowledge and practical skills needed to work in this challenging, but rewarding, vocational area. The courses include a large proportion of work experience in a variety of placement settings where you'll be able to apply theory to your practice.

Proud to work with:



Pirelli Centre



Industry insight...

Real Work Experience You'll study a wide range of units that will help prepare you to work in the child education sector. The Full Time courses include a large proportion of work experience in a variety of placement settings where you'll be able to apply theory to your practice.

Sustainability



- As a sector, the move toward recycled sustainable resources that last for years has already begun, including sustainable resources, equipment and practices.

T-LEVELS



Introducing new T Levels

“As a College, we are really looking forward to training the Early Years Educators of the future through the delivery of our new T Level programme in Education & Early Years. Our exciting programme fully prepares our students for their chosen careers in the childcare sector, opening doors to the many opportunities that this wonderful industry creates.”

Libby Haughton
T Level Course Manager

“ LMC gave me experience in different settings, which helped me to decide on what I wanted to do. It also enabled me to gain the qualifications so that I can work in an early years setting or apply to university.

Even though there is a lot of work involved, the end result is so rewarding and worth it!

Emily Winn
Early Years Educator Level 3 CPLD



Progression opportunities

Many students choose to progress onto the next level of study, relevant Apprenticeship, or progress onto university to study Primary Education or degrees relating to Early Childhood Studies, Psychology, Social Work or Child and Family Studies.

There are many career opportunities in the industry, including:

- Teaching Assistant
- Early Years Practitioner
- Early Years Educator

Industry placements

Completing industry placements is at the centre of our Child Education curriculum. Students may carry out industry placements at nursery settings, pre-school, or primary schools, gaining practical experience and knowledge to develop the skills needed to become an excellent practitioner.

Full Time Courses

See page 26/27 for entry requirements

Caring Professions Pathway

Level 1 • 1 Year

This course has been designed to support students who want to gain basic knowledge of Childcare and who may not have entry requirements for mainstream courses.

Caring for Children Under 5

Level 1 • 1 Year

This course will develop your knowledge of young children and help you to develop a range of skills in the early years sector. It will also help to prepare you for Level 2 study.

Diploma for the Early Years Practitioner

(Early Years Practitioner)

Level 2 • 1 Year

This course provides you with the knowledge and understanding of babies and young children from birth to seven years of age, with applied knowledge in the early years. Upon successful completion of this qualification, you can enter the workforce as a Level 2 Early Years Practitioner, in a variety of roles such as nursery practitioner, classroom assistant or pre-school practitioner, or go onto Level 3 study.

Alternatively, there are also opportunities to progress into Level 2 positions in nurseries, pre-schools and reception classes, as you will be a licenced Early Years Practitioner.



Level 1

Level 2

Level 3

Employment



T-LEVELS

T Level Foundation Year - Education & Early Years

Level 2 • 1 year

This foundation programme is for students who have the ambition to succeed on a T Level programme but are not quite ready to start. The foundation year is designed to give learners effective, tailored preparation specifically to help them progress onto a T Level. You will learn all about the holistic needs of children and young people and attend an industry placement to prepare you for a T Level.

For more information visit lmc.ac.uk/courses

T Level Education & Early Year

Level 3 • 2 years

The core element of a T Level in Education & Early Years offers you the opportunity to develop knowledge and understanding of the sector and the holistic needs of children and young people. The Early Years Education specialism builds up the skills needed for future jobs. There is a 750-hour minimum industrial placement as a mandatory part of this course. On the course, you will demonstrate higher-level study skills, as well as the values and behaviours required for occupational roles in Education & Early Years. The T Level prepares you for the world of work, as well as providing significant preparation for study at Higher Education in a range of relevant disciplines.

On completion of this course, you will hold a licence to practice in an early years setting.

Apprenticeships

See page 26/27 for entry requirements

Early Years Practitioner Apprenticeship

Level 2 • 16 months

The aim of this Apprenticeship is to provide you with the knowledge and understanding of babies and young children from birth to seven years of age with applied knowledge in the early years (0–5 years).

Additional entry requirements:

- Complete a satisfactory DBS check

Early Years Educator Advanced Apprenticeship

Level 3 • 18 months

An Early Years Educator initiates activities based on individual children's needs, and supports children to develop in various areas of education. This Apprenticeship is a perfect choice if you want to continue your studies and develop your skills, knowledge and behaviours within the childcare sector, making children feel safe and shaping learning behaviours, whilst also earning a salary in full-time employment; kickstarting your long-term career path.

Additional entry requirements:

- Complete a satisfactory DBS check and;
- Relevant industry experience

Teaching Assistant Apprenticeship

Level 3 • 18 months

This Apprenticeship is a perfect choice if you want to continue your studies and develop your skills, knowledge and behaviours in a teaching role, whilst also earning a salary in full-time employment. Teaching Assistants work in primary, special and secondary education across all age ranges encompassing special educational needs and emotional vulnerabilities.

You will gain a Paediatric First Aid certificate whilst studying this Apprenticeship.

Additional entry requirements:

- Complete a satisfactory DBS check; and
- Relevant industry experience

“

My favorite part of the role as an advisor at LMC is sharing my lifelong knowledge and experience within the early years industry, and supporting my students by enabling them to grow and develop to reach their full potential.

”

Julie Adams
Childcare Adviser

Level 1

Level 2

Level 3

Employment





Creative Digital Media & Sound



Creative Digital Media offers huge and varied career opportunities including animation, web-design, games production, 3-D visualisation and roles within the film and TV industry. At LMC, we offer courses from Level 1 up to Level 5 HND, and you'll work in an industry standard digital environment with a range of software and hardware to produce creative solutions to media assignments.

Proud to work with:



Industry insight...

In 2022, the global Esports market was valued at just over 1.38 billion U.S. dollars. Additionally, the Esports industry's global market revenue was forecast to grow to as much as 1.87 billion US dollars in 2025, with expectations of further growth in years to come (statista.com 2022)



Sustainability

- The new Esports team shirts are made from an entirely recycled fabric.



Industry advice from a TV pro

This year, our students took part in a Film & TV Workshop with Sam Rutter, a UK based lighting camera operator, editor and focus puller with over 11 years' experience in the industry.

The group learned about Sam's journey and got some great hints and tips on getting into the industry. He also gave some valuable industry intel and discussed the reality of being self-employed in the Film & TV world.

The students were able to use the latest industry-standard equipment and learn new techniques in effects, video production and outdoor events filming.

“

It is testament to the work completed that really cements a successful Esports programme at LMC. Welcoming HyperX onboard will strengthen our own brand, provision, and facilities to existing and future students, offering recognition and reward for student and staff endeavours”

Kevin Clark-Patterson
Lecturer, Creative &
Digital Media



Young Creatives Project

We are partnering with the iconic Winter Gardens in Morecambe to offer an exciting new programme for learners who wish to develop their skills and progress within the Creative Industries



Image taken by Damian Rose (A member of the Theatre Historical Society of America (THS))

Industry links

We are fortunate to have a number of very strong links to the industry and local media firms, including:

- University of Central Lancashire
- HyperX
- Lancaster Police
- Morecambe Bay Food Bank
- Eden Project Morecambe

Full Time Courses

See page 26/27 for entry requirements

I-Media

Level 2 • 1 Year

This course is designed to challenge your abilities across the full media scope including graphic design, photography, animation, music, film, video production, games design and professional editing skills.

Esports

Level 3 • 2 years

This future-forward course, developed in partnership with the British Esports Association, is designed to help you turn a passion for gaming into successful and skilled careers in the rapidly growing industry.

As part of the main programme, you will be responsible for creating your own brand, designing a logo and launching your own channel. You will also be expected to develop a real life Esports event from initial creation, through to managing and hosting the event.

Additional entry requirements:

To study a Creative Digital Media & Sound course, you will need:

- To create a short piece of work for interview; and
- Enthusiasm for the subject with a commitment to study, and show good skills in practical subjects.

Creative Digital Media

Level 3 • 2 years

Creative Digital Media has a strong emphasis on giving you a broad range of skills across a number of disciplines in digital media, games development, sound design and film and television. Each brief on this course gives you a broad introduction, with opportunity to develop skills in specific technical areas.

Creative Digital Media HNC

Level 4 • 1 Year

This HNC course will develop your practical project management skills in preparation for a career in the creative media industry, or progression to further study. You will use professional standard equipment and software to produce a range of media projects, such as promotional videos, documentaries, web content, computer games and other media-rich applications in a challenging and productive environment.

Creative Digital Media HND

Level 5 • 1 year

The Creative Digital Media HND further develops your practical project management skills in preparation for a career in the creative media industry. You will use professional standard equipment and software to produce a substantial portfolio of media projects with emphasis on student conceptualisation, design and execution from the ground up through to completion.

Level 2

Level 3

Level 4

Level 5



Music Performance & Production

Level 2 • 1 year

Learn the fundamentals of Music Performance & Production, as well as developing a broader contextual understanding of the industry. Assignments are produced via consultation with local employers and professionals to ensure you are completing the course with relevant knowledge and skills to succeed in the industry.

Additional entry requirements:

To study a Music Performance & Production course, you will need:

- A proven interest in music performance and/or music production.

Music Performance & Production

Level 3 • 2 years

This course teaches the skills, knowledge and necessary understanding to progress to further study and training in a range of Music Performance & Production disciplines. Summative assessment is designed to ensure you deliver a collaborative project at the end of the course, and can plan, prepare and deliver an extended music project at the end of the Extended Diploma.



Digital Technology



Digital Technology is in every part of every day. You can't do much without the application of digital technology and the demand for skilled IT graduates is growing. On a Digital Technology Apprenticeship, you'll develop skills that are transferable into existing and emerging job roles.

Industry insight...

Digital technology facts In recent years, the Digital Technology sector has grown by around 7% a year – faster than the UK economy as a whole – and it is now estimated to support around three million jobs.



Sustainability

- We encourage our students to think twice before printing, to save on energy, paper and waste.



Students trek through cold conditions for the Duke of Edinburgh Award

Many of our Pathway students get out and about for their studies in preparation for the Duke of Edinburgh Award.

The students visit 6 different locations, where they will be assessed on their planning, map reading, emergency response training and leadership skills. This is part of their Outdoor Leadership Unit and in preparation for the Duke of Edinburgh Bronze Award.

Progression opportunities

There are many exciting roles to progress onto within Digital Technology, including:

- IT Specialist
- Digital Coach
- Database Administrator
- IT Operations Technician
- Digital Applications Specialist
- Illustration

See page 28-29 for entry requirements

Full Time Courses

Digital Technology Pathway

Level 1 • 1 year

All Pathway courses at LMC provide you with a positive foundation into studying at College.

This Digital Technology Pathway is designed for students who have an interest in developing skills and knowledge related to computing, IT and digital technology.

Industry links

In addition to your work based training, we offer a Skills Development Academy to give you the opportunity to gain further knowledge and confidence in your field of study. This gives you the opportunity to meet other apprentices, socialise on campus and gain additional industry insight from guest speakers.



Eden Land-Based & Animal Studies



Eden Land-Based & Animal Studies courses at LMC will cover the core subjects in animal care and management, whilst specialising in wildlife, ecology and conservation. You'll work with over 150 small animals, as well as gaining work experience within the Land-Based sector.

Proud to work with:



Industry insight...

Work placement experience *"As part of my studies, I underwent a work placement. This was one of my favourite bits about the course! My work placement was at the Canine Company, a dog walkers based in Lancaster. I loved spending my Mondays up in the hills, walking dogs all day, and it gave me some great insights into the industry."*

Sustainability



- We use environmentally friendly animal bedding, recycle all products and our animal enclosures use LED lighting to reduce energy usage.



Pursue Your Dreams!

Emma originally studied BSc Psychology at Lancaster University, but always found herself drawn to the natural world. So, upon graduating, she decided to pursue her passion of working in the animal care industry and enrolled on the Level 3 Animal Management course at LMC.

After finishing her course, she applied to work as an Animal Care Assistant at Animal Care, an animal rescue shelter in Lancaster, and states, *"To put it simply, it is the best job ever! Without undergoing this course, there is no way I would be able to be in the job I am today."*

Emma Wright, Animal Management L3

“ I enjoy sharing my knowledge and experience of animals with students and watching their learning journey as they make progress throughout their time at LMC. I also really like managing the practical facilities and looking after the range of different animals within our collection.

”

Victoria Bond
Eden Land-Based & Animal Studies
Programme Area Manager



Progression opportunities

Following the completion of a Land-Based course at LMC, many students choose to progress onto a higher level course, or a Higher Education course within College, or, alternatively choose to go to university.

There are many exciting employment opportunities in the Land-Based industry, including:

- Zoo Keeping
- Pet Shop Management
- Conservation Work

Educational visits

Many of our courses involve educational visits to organisations such as:

- Leighton Hall Estate
- Lakeland Wildlife Oasis
- Chester Zoo
- Greenlands Farm Village
- Blackpool Zoo

Full Time Courses & T Levels

See page 26/27 for entry requirements

Animal Studies Pathway

Level 1 • 1 year

All Pathway courses at LMC provide you with a positive foundation into studying at College. This course is designed for anyone wishing to pursue a career in working with animals, and includes theory-based lessons where you'll learn how to care for animals, alongside practical workshop sessions.

Land-Based Studies

Level 1 • 1 year

This course is an introduction to the Land-Based industries with a particular focus on animal care and welfare. It provides an opportunity to investigate job opportunities and to acquire appropriate workplace skills.

Animal Care

Level 2 • 1 year

This course aims to provide you with an introduction to Animal Care, which could lead to employment at a junior level, or to the Level 3 Animal Management course. It will also help you to develop personal and administrative skills needed in this area of work.

T-LEVELS

NEW T Level - Animal Management

Level 3 • 1-2 years

This is a 2 year programme that will ensure you gain the knowledge, skills and behaviours required to progress to employment or higher education within the animal care sector.

The course has a practical approach to learning with on-the-job experience in the form of 45 days/315 hours (minimum) mandatory industry placement. You will gain experience of working with different animals within the Colleges specialist workshops.

Looking for a Part Time course?

If you are interested in a part time course, we also offer:

- **Practical Animal Care Skills - Level 2**

For further information lmc.ac.uk/part-time/environmental

Level 1

Level 2

Level 3

Employment





Energy, Engineering & Construction



We pride ourselves at LMC on being one of the best providers of Energy, Engineering & Construction training in the North West. You'll be studying in our industry standard workshops with first class facilities, alongside lecturers with years of experience in the field. You'll be learning from the best in the business.

Proud to work with:



Industry insight...

National Employer Links The department has local and national links with employers to showcase the engineering and construction industry to students from a real-life perspective and works closely with the demand for trade workers in the area.

Sustainability



- Our new Electric Vehicle Charger Fitting Centre has been developed to train fitters to support hitting a target of 30,000 public EV charging points needed by 2030.

Innovative new Electrical Centre in partnership with Bowkers

The College worked with the prestigious local firm Bowkers to design and co-construct the Chris Bowker Electrical Centre, which has been developed to expand on the electrical courses at LMC to provide new courses for industry professionals, apprentices and full time students. The new facility, which was funded through the Department for Education's Strategic Development Fund (SDF) project, houses modern resources that meet the strict requirements of industry standards, and includes 4 electric vehicle (EV) charging points.



“

A group of our Level 3 Engineering Apprentices travelled to Iceland in 2023 for 2 weeks. They had a busy schedule during their trip, including visiting Reykjavik University and a geothermal power station. They undertook work experience placements, as well as seeing the natural wonders of Iceland as part of their visit.

”

Part of the current Turing Scheme project



Progression opportunities

On completion of an Energy, Engineering & Construction course at LMC, many students choose to progress onto a relevant Apprenticeship, employment, self-employment and may work nationally or even internationally.

There are many exciting career opportunities in the industry, including:

- Supervisor
- Business Owner
- Heritage Work

Outside the classroom

We invite industry guest speakers along to chat to students on all Energy, Engineering & Construction courses, alongside an opportunity to take part in events across the College. All Full Time students can get involved in programmes such as National Citizen Service (NCS), which offers students a team bonding experience outside of their comfort zones.

Full Time Courses & T Levels

See page 26/27 for entry requirements

Engineering

Level 1 • 1 year

This course is designed to develop the basic engineering skills, knowledge and behaviours that will prepare you for a career in Engineering. You will learn about hand fitting skills, engineering practices and principles, welding and hand and power tools.

Engineering

Level 2 • 1 year

This course covers the knowledge required for a career in engineering and power industries. It is aimed at preparing you to enter the sector by grounding you in working safely and effectively, plus interpreting and using engineering information with an introduction to Computer Aided Design (CAD).

Additional entry requirements

- Relevant industry experience OR
- A Level 1 qualification in a related subject

T-LEVELS

NEW Design & Development for Engineering & Manufacturing T Level

Level 3 • 2 years

Students will develop the core knowledge and skills that are needed for entry into a range of design and development occupations within engineering and manufacturing. In addition to the core content, each student will complete at least one occupation-specialism in either mechanical engineering, electrical and electronic engineering, control and instrumentation engineering or structural engineering.

Engineering HNC

Level 4 • 1 year

The Extended Certificate in Engineering (Nuclear) delivered at LMC in collaboration with the National College for Nuclear (NCfN) holds the potential to open doors to many fantastic and exciting opportunities. There is a wide variety of exciting roles within the sector, such as Radiation Protection Technician, Project Control Engineer and Aerospace Engineer.

Additional entry requirements:

- A recognised Level 3 extended certificate, extended diploma or A Levels relevant to Engineering
- GCSE English at grade C/4 or higher.

Level 1

Level 2

Level 3

Level 4

Apprenticeships

Engineering Operative Apprenticeship

Level 2 • 18 months

Engineering Operatives are predominantly involved in engineering operations which are key to the success of the Manufacturing & Engineering sector, allowing employers to grow their business, whilst developing a work force with the relevant skills and knowledge to enhance and sustain the sector.

Lift Truck and Powered Access Engineering Technician Apprenticeship

Level 3 • 36 months

Lift Truck and Powered Access Engineers can be found in many sectors, wherever businesses need to lift and move products, equipment and people safely. This is vital to a huge range of industries including: engineering, manufacturing and construction, food manufacturing and the storage and logistics industries.

The broad purpose of this course is to service, repair and maintain lift trucks and powered access vehicles.

Maintenance and Operations Engineering Technician Apprenticeship

Level 3 • 36 months

This Apprenticeship will provide you with all the skills required to start or further your career within the Engineering industry. You will learn to maintain the safety, integrity and effective operation of plant and equipment in industries that are part of the national infrastructure engineering sector. You will also develop the underpinning knowledge, including health and safety, you need for working in any engineering environment.



The Apprenticeship Awards 2023 showcased the many talented apprentices we have here at LMC, including many from the Construction and Engineering department.

Full Time Courses & Apprenticeships

See page 26/27 for entry requirements

Fabrication & Welding

Level 1 • 1 year

Fabrication & Welding Level 1 is designed to give you the basic engineering skills and knowledge to prepare you for a career in the Welding industry. You will develop safe working practices and competency in fabrication and welding in order to progress into further studies or employment.

Fabrication & Welding

Level 2 • 1 year

Fabrication & Welding Level 2 is designed to give you a more focused introduction to the engineering skills and knowledge required to prepare you for a career in the Fabrication & Welding industry. You'll learn about producing fabrication components and assemblies, joining materials using MMA, MIG and TIG processes, and related engineering knowledge.

Additional entry requirements

- Relevant industry experience OR
- A Level 1 qualification in a related subject

General Welding Apprenticeship

Level 2 • 18 months

This Apprenticeship will provide you with all the skills required to start a career in the General Welding industry. You will learn the principles of general welding, such as butt, fillet, lap and corner joints in the flat, horizontal and vertical positions, as well as underpinning knowledge, including health and safety, you need for working in any engineering environment.

Plate Welding Apprenticeship

Level 3 • 36 months

This Apprenticeship will provide you with the skills required to further your career in the Plate Welding industry. You will learn advanced health and safety as well as fundamental welding principles such as butt, fillet, lap and corner joints in the vertical and overhead positions that will undergo both destructive and non-destructive testing to international standards.

Looking for a Part Time course?

If you are interested in a part time course, we also offer:

- MIG, TIG, & MMA Welding - Levels 1/2

Visit lmc.ac.uk/part-time/construction-engineering

Level 1

Level 2

Level 3

Employment



Full Time Courses & Apprenticeships

See page 26/27 for entry requirements

Construction Skills

Level 1 • 1 year

This course is for students who are interested in the construction industry and want to develop skills within the trades, with a view to progressing onto a specific course in the construction industry, such as Bricklaying, Carpentry & Joinery or Plastering.

General Builder

Level 1 • 1 year

This course is a good introduction to bricklaying and general building for anyone wanting to work in the construction industry. Starting with little or no experience, this course will build your practical skills and prepare you with the theory and knowledge ready to progress to Level 2.

General Builder

Level 2 • 1 year

This course is suitable for those progressing from Level 1 or have experience, who wish to work in construction with a specific interest in bricklaying. Completion of this course could lead to an Apprenticeship in the industry, further study on a Level 3 related course or employment.

Bricklaying Apprenticeship

Level 2 • 24 months

The perfect choice if you want to continue your studies and develop your skills, knowledge and behaviours in Bricklaying, whilst also earning a salary in full-time employment.

Property Maintenance Operative Apprenticeship

Level 2 • 24 months

This Apprenticeship will provide you with all the skills you require to start a career within the Property Maintenance industry. As a Property Maintenance Operative, you will need to maintain a high level of quality customer service and satisfaction. By the end of your Apprenticeship, you will understand the mechanism of buildings, including electrical, plumbing, plant, fire and security systems equipment.



Students work with The Churches Conservation Trust on heritage skills

Level 1

Level 2

Level 3

Employment



Plastering

Level 1 • 1 year

This course is a great way to start your career and develop the basic skills required to progress in the plastering trade, such as applying wet finishes to walls, ceilings and dry lining. This is a great progression route onto the Level 2 course in Plastering.

Plastering

Level 2 • 1 year

This course is suitable for those progressing from Level 1 or have experience, who wish to enhance their skills in plastering. You will be based in our industry standard workshops where you'll develop the necessary skills to become a plasterer, including both practical and theory work. Completion of this course could lead to an Apprenticeship in the industry, further study on a Level 3 related course or employment.

Looking for a Part Time course?

If you are interested in a part time course, we also offer:

- Plastering- Level 1

Visit lmc.ac.uk/part-time/construction-engineering

Full Time Courses & Apprenticeships

See page 26/27 for entry requirements

Electrical Installation

Level 1 • 1 year

This course gives you a good introduction to both theoretical and practical aspects of electrical installation and can lead to an Electrical Apprenticeship or progression onto the Full Time Level 2 Electrical Installation course.

Electrical Installation

Level 2 • 1 year

Electricians have exciting opportunities of work varying from domestic settings to industrial environments and so you are required to actively solve problems on this course; ideal for someone who wants to pursue a hands-on career.

Additional entry requirements:

- GCSE Maths at grade 4/C or higher.



Electric Vehicle Charger Fitting Centre has been developed to train future fitters

Vehicle Fitting Operations

Level 2 • 1 year

Vehicle Fitting Operations Level 2 is designed to cover the theoretical and practical aspect of garage operations, including light vehicle tyres, exhaust systems, batteries and brakes. The course is both classroom and workshop based with practical and on-line assessments. You will also gain a broad knowledge of health and safety in the workplace, along with other skills associated with working in a garage.

This qualification is facilitated by Lancaster Training Services (LTS).



Fire Emergency and Security Systems Technician Apprenticeship

Level 3 • 36 months

An Apprenticeship is a perfect choice if you want to continue your studies and develop your skills, knowledge and behaviours in a specific industry, whilst also earning a salary in full-time employment; kickstarting your long-term career path.

This Apprenticeship will provide you with the skills you require to start a career within the fire and security industry. You will have the opportunity to learn the underpinning knowledge of design, installation, commission and maintenance of electronic systems in and outside simple and complex premises to protect individuals, homes and properties from risk and danger.

Additional entry requirements:

- GCSE Maths at grade 4/C or higher.

Level 1

Level 2

Level 3

Employment



Carpentry & Joinery

Level 1 • 1 year

This course is for students who wish to develop basic carpentry and joinery skills with a view to progression within the construction industry. You will learn safe working practices, communication, how to prepare and maintain power tools, and basic construction technology.

Carpentry & Joinery

Level 2 • 1 year

This course is suitable for adults, and those progressing from Level 1, who wish to enhance their skills in carpentry and joinery. You will learn how to use power tools, fixing skirtings, architraves and hinged doors, as well as first and second fixing before plastering. Completion of this course could lead to progression onto an Apprenticeship.

Carpentry & Joinery Apprenticeship

Level 2 • 24 months

This Apprenticeship gives you the scope to develop a broader understanding of how companies operate and how work is prepared within the Joinery field. Practical assignments set in real-life workplace scenarios will help you learn, build skills, and develop behaviours which you'll use in your future career.

Craft Joinery Apprenticeship

Level 3 • 15 months

This course is suitable for those progressing from the Level 2 Apprenticeship and gives you the scope to develop a broader skill set. The course can provide a platform to progress into management, university and even self employment. The tasks in this course are bespoke and will enable you to fine tune your practical ability and theory knowledge in the trade.

Full Time Courses & Apprenticeships

See page 26/27 for entry requirements

Plumbing & Heating

Level 1 • 1 year

This course is a great way to start your career in the Plumbing & Heating trade. You will develop basic skills in order to progress into further studies or employment, such as above ground drainage, fundamentals of pipework, safe working practices and more.

Plumbing & Heating

Level 2 • 1 year

This course is suitable for school leavers, adults, and those progressing from Level 1, who wish to progress in the Plumbing & Heating industry. You will develop the necessary skills to become a plumber, including both practical and theory work in copper, steel, sanitation, cold water, hot water cylinders, plastic pipe work, central heating, safety, and communication.



Apprentices work with Worcester Bosch perfecting their skills in boilers servicing

Plumbing & Domestic Heating Technician Apprenticeship

Level 3 • 48 months

You will receive regular monitoring and assessment, both in the workplace and at College, to ensure you're developing the required skills, knowledge, and behaviours to succeed in the Plumbing & Heating trade. On this Apprenticeship, you will learn the fundamentals in gas, water and central heating appliances, which can lead you to full time employment, self-employment or further studies in ACS gas, or oil pathways.

Gas Engineer Apprenticeship

Level 3 • 18 months

This Apprenticeship will provide you with the skills required to further your career in the gas industry. You will learn advanced health and safety, science and the principles required to work in the construction and engineering environment. You will be taught in industry standard workshops, ensuring you gain confidence and proficiency, whilst developing your skills and gas knowledge. On qualifying from this course you will hold qualifications for ACS, Unvented Cylinders and Water Regulations.



Level 1

Level 2

Level 3

Employment





Foundation Education

Choose your future

Foundation Education aims to provide you with a positive start into Full Time study at College. Here at LMC, we believe that offering you the right support network and a variety of options will motivate and inspire you to achieve, giving you the confidence to progress onto Traineeships, Apprenticeships, supported employment or further study within College.

Proud to work with:



Industry insight...

Sample Various Industries Foundation Education at LMC gives students the opportunity to sample a range of vocational areas and industries with all courses including work experience in real working environments within College.

Sustainability



- Students get the opportunity to take part in enterprise and fundraising activities throughout the year to raise awareness for causes and give back to the community.



Students take on the challenge of the Lake District for the Duke of Edinburgh Award

Over the summer, our Level 1 & 2 Pathway to Sports and Public Services group ventured into the Lake District to undertake the Duke Of Edinburgh Expeditions.

The group undertook their 1 night, 2 day hiking expedition at Great Langdale National Trust Campsite and completed a total of nearly 20km over the two days, in some very hot weather!

They cooked their own evening meals and breakfast during the trip as well and got to spend some time cooling off their toes in the fresh waters.

See page 26/27 for entry requirements

Full Time Courses

Bridge to Progression

Entry/Level 1 • 1 year

This full time course helps “bridge the gap” between school and College, and is suitable for young people who want to develop their employability skills and build confidence.

Step Up

Entry Level • 1 year

This full time course is designed for 19 + learners who require additional support within their learning journey. The course gives opportunities to sample a range of vocational areas, whilst improving Maths and English skills.

Pathway Routes

Level 1/2 • 1 year

These courses provide you with a positive foundation into studying at College.

- Caring Professions Pathway
- Animal Studies Pathway
- Hospitality & Catering Pathway
- Sports & Public Services Pathway
- Digital Technology Pathway
- Employability Pathway



Well done to our Panability football team this season...

...Lancaster & Morecambe College won the tournament with the last kick of the game!!

It's been another great year with the AOC North West Panability League and a great way to end the season.





Supported Internships

Choose your future

A Supported Internship is a life-changing employment programme for young people with learning disabilities and autism. Lancaster & Morecambe College, Royal Lancaster Infirmary, HFT, DFN Project SEARCH, and Lancashire County Council have formed a collaborative partnership to give young people with an Educational, Health and Care Plan (EHCP), vital work-based learning opportunities within the Royal Lancaster Infirmary, to help them to secure meaningful, paid employment.

Proud to work with:



Industry insight...

One to one support Every young person is supported in the work placement by a trained job coach. The job coach provides in-work support that tapers off, if appropriate, as the supported intern becomes familiar with their role. Job coaches also work with employers, increasing their confidence in employing individuals with additional needs and helping them to create and support a diverse workforce.

Career focus



- The Supported Internship will contribute to the long-term career goals of the young person and match their capabilities. Alongside their time with the employer, they will complete a personalised study programme.



A journey into meaningful employment with a Supported Internship

Supported internships are a structured, work-based study programme for 16 to 24-year-olds with SEND, who have an Education, Health and Care Plan (EHC). The core aim of a supported internship study programme is a substantial work placement, facilitated by the support of an expert job coach.

The internships provide the opportunity for young people to achieve sustained, paid employment by equipping them with the skills they need for work, through learning in the workplace.

Supported interns are in full-time education and their supported internship work placements are part of their course.

“ Jake has been nothing but amazing in his new role, building on his communication skills, customer service and supporting others in the workplace and we can't wait to watch him flourish over the rest of the year.

”

**Jake - Supported Internship
Same Day Emergency Care Centre
Royal Lancaster Infirmary**

See page 26/27 for entry requirements

Full Time Courses

NHS - Supported Internship

Entry Level • 1 year

The aim of supported internships is to support young people with EHCP to gain paid employment by:

- Supporting them to develop the skills valued by employers;
- Enabling them to demonstrate their value in the workplace; and
- Developing confidence in their own abilities to perform successfully at work.

Eligibility

To apply for the Supported Internship you must:

- Be aged 16-24;
- Have an Education, Health and Care Plan (EHCP);
- Be travel trained or be willing to take part in travel training;
- Have a desire to achieve paid employment of 16 or more hours a week; and
- Behave and dress in a professional manner.





Hairdressing



Whilst studying Hairdressing at LMC, you have access to our industry standard facility The Salon, alongside a team of highly experienced tutors. With access to real-life experience on live clients, you'll learn how to develop the skills and techniques needed for a career in the industry and gain confidence in your knowledge to develop your individual creative and artistic talent.

Proud to work with:



The Salon
Hairdressing & Beauty Therapy



Industry insight...

Industry standard facilities on site The Salon on campus is open to the public, ensuring you are learning the key employability skills required to be a hairdresser alongside our industry specialist tutors, who also work in salons in the local area in their own time.

Sustainability



- ECOHEADS™ at all wash basins using 65% less water than a regular shower head and reducing water usage by 390L per chair, per day.



Students participate in Community Give Back Day

In March 2023, we had some special guests from the local community visit our Salon as part of our Community Give Back Day.

We had family members, some regular clients and some visitors from Vale View Day Centre visit us to be pampered and enjoy the Salon experience totally free of charge.

The ladies had hair cuts and perms plus a bite to eat, and provided students with some wonderful, valuable feedback.

An enjoyable day for all involved!

“

100% do the Hairdressing Apprenticeship at Lancaster & Morecambe College! There are many knowledgeable tutors who are very supportive, there to help you thrive and achieve what you want from the course! It's also a good opportunity to meet new people and make new friends.

”

Neve Stokes
Hairdressing Professional
Apprenticeship Level 2



Progression opportunities

Following the completion of a Hairdressing course, many students choose to progress into employment, self employment, or an Apprenticeship.

There are a variety of exciting roles within the Hairdressing industry:

- Salon Hairdresser
- Media Stylist
- Salon Manager
- Colouring Technician
- Self-employed Hairdresser

Employability skills

You will undertake industry placements in a local salon, allowing you to experience the real life working environment and develop your confidence and technical skills.

Additionally, on our Hairdressing courses, there are opportunities to access additional training with Wella's Manchester Academy, as well as taking part in internal and external competitions.

Full Time Courses & Apprenticeships

See page 26/27 for entry requirements

Hair & Beauty Introduction

Entry Level 3/Level 1 • 1 year

This course offers an introduction to the exciting and prosperous careers available in Hairdressing & Beauty Therapy. You will gain knowledge and new skills in a variety of basic Hairdressing & Beauty Therapy services. The Entry Level 3 course is designed for students without qualifications, and can be discussed at interview.

Hairdressing

Level 2 • 1 year

This course focuses on the development of the underlying principles and practical skills required in the hairdressing industry. During this course, you will gain a variety of skills such as shampooing, conditioning, colouring, cutting, and styling hair. You will gain experience of working with multiple women's hairdressing techniques.

Hairdressing

Level 3 • 1 year

This advanced Hairdressing course is ideal for those wishing to further develop their skills and knowledge in this vocation. The course is a mix of both theory and practical sessions looking at advanced cutting, styling, and colouring techniques. You will be expected to build a portfolio of evidence and practical assessments throughout the year, to show your practical competence in the application of hair services.

Additional entry requirements:

- Level 2 qualification in Hairdressing

Hair Professional Apprenticeship

Level 2 • 24 months

The Hair Professional Level 2 Apprenticeship is a course that focuses on the development of the underlying principles and practical skills required in the Hairdressing industry. During your Apprenticeship, you will gain a variety of skills such as shampooing, conditioning, colouring, dressing, and styling hair. You will also learn cutting and perming techniques.

This is the perfect course for anyone who is hoping to enter the Hairdressing industry and would like to achieve this through a route where you can earn while you learn.

Advanced & Creative Hair Professional Apprenticeship

Level 3 • 12-15 months

The Level 3 Apprenticeship is ideal for those who wish to progress from Level 2 and are creative, passionate and driven stylists. This qualification is aimed at stylists who work without supervision and are able to manage themselves and others, as required. This course includes, using fashion forward trends in hair, creative and precision techniques to create a collection of hairstyle looks, precision and personalised cutting techniques, smoothing and strengthening services and advanced creative colour conversion.

Level 1

Level 2

Level 3

Employment





Health, Care and Forensic Science



Our health courses give you access to exciting programmes of study taught by qualified tutors with industry experience. You'll undertake extensive work experience in a variety of settings, where you can apply what you've learnt in the classroom to practical experiences. This sector is one of the largest employers in the local area, so there will always be work waiting for newly qualified individuals.

Proud to work with:



Industry insight...

Supplying the national shortage Our courses offer students the opportunity to enter an industry that is in demand for workers, with access to exciting programmes of study across all levels. The Health and Social Care sector is one of the largest employers in the local area so these courses can lead to fantastic job opportunities.

Sustainability



- We aim to educate students on providing safe, reliable care through skills development, and support them to be independent and innovative thinkers, instilling resilience and sustainability.



Health Training Ward opened for T Level Studies

In 2023, Ray Olive, first appointed Chair of the National T-Level Ambassador Network, visited the LMC campus and officially opened our new Health Training Ward and met with some of our Health & Social Care learners. The ward, which is a mirror image of a working NHS hospital ward, boasts a wide range of the latest high-tech equipment, including cardiovascular machines, blood pressure monitors and realistic manikins, allowing the students to develop crucial skills.

Our Health & Social Care students were given the chance to experience dissecting organs with The Post-Mortem Live team on campus.

“ I learnt about the anatomical position and more in-depth anatomy overall, and would highly recommend this to anyone who enjoys human anatomy and physiology. ”

Tiegan Higgins,
Health & Social Care



Progression opportunities

Some of our students choose to progress onto Higher Education, completing degrees in Nursing, Criminology, Psychology, Midwifery and Social Work, whilst others progress onto full time employment or Apprenticeships.

There is a variety of exciting roles within Health & Care:

- Counsellor or Social Worker
- Nursing
- Occupational Therapy

Outside of the classroom

Our Health & Care courses involve additional activities including guest speaker visits, external trips, projects, and events.

These activities provide our students with a good understanding of the Health & Care industry, the local community, and the career options available to them.

Full Time Courses

See page 26/27 for entry requirements

Care Profession Pathway

Level 1 • 1 year

All Pathway courses at LMC provide you with a positive foundation into studying at the College.

This course has been designed to support students who want to gain a basic knowledge of Health & Social Care and who may not have the mainstream entry requirements for other courses.

Health & Social Care

Level 2 • 1 year

This is an interesting and challenging Full Time course, which is designed for students wishing to gain employment in the Health & Social Care sector, or wishing to progress on to Health & Social Care Level 3. The course is a mixture of academic study and vocational experience.

This course enables you to gain a breadth of knowledge and experience of the many aspects of Health & Social Care.

Health & Social Care

Level 3 • 1-2 years

This course supports students to gain an understanding of the careers available in Health & Social Care. Providing excellent links to vocational practice, the course is taught by staff with industry experience. The core values of Health & Social Care are covered throughout the programme. Examples of subjects include; Human Lifespan Development, Principles of Safe Practice, Anatomy and Physiology, and Work Experience. You will be required to complete a Practical Evidence Portfolio to show technical skills developed on the programme.

Alongside three days in College, you will complete one day per week on placement, and will be assessed through coursework, examinations, and portfolios.

Additional entry requirements:

To study Health & Social Care Level 2 and 3, you must:

- Have a caring and compassionate nature and have a passion for working with people;
- Be able to communicate confidently;
- Demonstrate effective teamwork in a real-work environment; and
- Complete a satisfactory DBS check.

Level 1

Level 2

Level 3

Employment



Full Time Courses and T Levels

See page 26/27 for entry requirements

NEW Forensic Science

Level 3 • 1/2 years

This course is for anyone interested in pursuing a career in criminology, policing, forensic science, forensic psychology and criminal investigation.

On this course, you will develop your analytical, evaluative, practical and interpretation skills to either progress onto university or into employment in the forensic and criminal investigative fields.

“

We are very excited about introducing Forensic Science as a new subject to LMC. Students on this course will have the opportunity to work in our brand new science facilities, including a practical space designated to Forensic Science.

Victoria Bond
Programme Area Manager



T-LEVELS

T Level Foundation Year Health

Level 2 • 1 year

This transition programme is for students who have the ambition to succeed on a T Level programme but are not quite ready to start. The foundation transition year is designed to give you effective, tailored preparation specifically to help you progress onto a T Level. You will learn all about working in the health sector, and the role of the healthcare practitioner, as well as scientific therapies and person centered health care. You will also attend an industry placement to prepare you for T Levels.

T Level Health

Level 3 • 2 years

The core element provides a variety of knowledge and skills relevant to the health route as a whole. The Supporting the Adult Nursing Team occupational specialism ensures you develop the knowledge, behaviours and skills needed for future jobs. There is a 315-hour minimum industrial placement as a mandatory part of this course, which also prepares you for skilled employment. The T Level prepares you for the world of work, as well as providing significant preparation for study at Higher Education in a range of relevant disciplines.

For more information visit
lmc.ac.uk/courses

Level 1

Level 2

Level 3

Employment





Hospitality & Catering

Choose your future

Studying Hospitality & Catering at LMC will give you access to the new Bay School of Hospitality team of expert tutors, who have professional experience of working at some of the UK's top hotels and restaurants. Through their extensive knowledge, you'll learn how to develop the skills and techniques needed to make it as a chef or hospitality team member, and gain experience in front of house roles in our new Bay Restaurant @LMC and kitchen facilities.

Proud to work with:



Industry insight...

Work ready skills As part of the Bay School of Hospitality partnership with the team at Gilpin, LMC Catering students and apprentices will be offered the opportunity to take part in a range of masterclasses and cooking demos with Gilpin's team of chefs, including Ollie Bridgwater, Aakash Ohol and Tom Westerland, whilst working towards achieving the prestigious Gilpin Ambassador's Award.

Sustainability



- We grow our own fresh produce and have a beehive on-site to use in our restaurant, as well as composting all our food waste.



The Bay School of **HOSPITALITY**

LMC launches Bay School of Hospitality and announces partnership with Gilpin Hotel

In autumn 2023, we launched a new Bay School of Hospitality with the exciting news that we have partnered with the award-winning team at Gilpin, one of the region's top destination venues.

The partnership will allow our Catering students and apprentices the opportunity to take part in a range of masterclasses and cooking demos with Gilpin's team of chefs, including Ollie Bridgwater, Aakash Ohol and Tom Westerland.



The focus of the Educate to Plate programme is to develop a College community garden and outdoor learning space, which will be used to engage and educate the College community to the green agenda. We need to support young people in the understanding of growing food in a sustainable way, whilst focusing on recycling, composting and upcycling.

Adrian Law
Hospitality & Catering tutor



Progression opportunities

Following the completion of a Hospitality & Catering course, many students choose to progress onto further study at LMC or into employment, self employment, or an Apprenticeship.

There is a variety of exciting roles within the Hospitality industry:

- Sous Chef
- Chef De Partie
- Catering Manager

Real work environment

You'll regularly work in our new The Bay Restaurant with its contemporary interior, first class service, and mouth-watering menu. Behind the scenes, you'll access the industry standard kitchens, where you'll learn the fundamentals of cooking.

Full Time Courses

See page 26/27 for entry requirements

Hospitality & Catering Pathway

Level 1/2 • 1 year

All Pathway courses at LMC provide you with a positive foundation into studying at the College.

This course has been designed to support students who want to gain a basic knowledge of Hospitality & Catering and who may not have the mainstream entry requirements for other courses.

Introduction to Professional Cookery

Level 1 • 1 year

This course is designed to give you a broad range of cookery skills and food services to form an introduction into the Catering industry. The practical classes will include food preparation and food service, with the theory lessons covering the essential knowledge required to complete your assignment work.

Professional Cookery

Level 2 • 1 year

This course is designed to build on a broad range of cookery skills and food services, to prepare you for a career in the Hospitality industry. The practical classes will include food preparation and food service. The theory lessons will cover the essential knowledge and will complement the required assignment work.



Students volunteer with EggCup Food Sustainability for work experience

Looking for a Part Time course?

If you are interested in a part time, course we also offer:

- Introduction to Culinary Skills - Level 1
- Patisserie & Confectionery - Level 2
- Culinary Skills - Level 2
- Creative Craft (Cake Decoration) - Level 1 Award
- Creative Craft (Cake Decoration) - Level 2 Certificate

For further information lmc.ac.uk/part-time/hospitality-catering

Level 1

Level 2

Level 3

Employment



Apprenticeships

See page 26/27 for entry requirements

Production Chef Apprenticeship

Level 2 • 18 months

This Apprenticeship is for those who are employed or wish to be employed as a Production Chef and would like to gain a qualification as a professional chef. You will work as part of a team in time-bound and often challenging kitchen environments, for example; schools, hospitals, the Armed Forces, care homes and high street casual dining or pub kitchens, and report to the Senior Production Chef or appropriate line manager.

Senior Production Chef Apprenticeship

Level 3 • 18 months

A Senior Production Chef may lead a brigade team or support the Head Chef in larger establishments. They also supervise production chef teams in a variety of kitchen environments, for example; schools, hospitals, the Armed Forces, care homes and high street, casual dining, or pub kitchens. On this Apprenticeship, you'll be responsible for the day-to-day running of kitchen service, across all areas and during all stages of production and supply.

Additional entry requirements:

- Level 2 qualification in a relevant subject area.

Commis Chef Apprenticeship

Level 2 • 18 months

As a Commis Chef, you will prepare food and carry out basic cooking tasks under the supervision of a more senior chef. The primary objective of a commis chef is to learn and understand how to carry out the basic functions in every section of the kitchen and therefore having the opportunity to experience, consider and value each section with a view to choosing an area where they feel most inspired.

Chef de Partie Apprenticeship

Level 3 • 18 months

As a Chef de Partie Apprentice, you will be responsible for running a specific section of the kitchen. You may manage a small team of workers, which you must keep organised so that dishes go out on time and the work area remains clean and orderly. In smaller kitchens, however, a Chef de Partie may work independently as the only person in their section. The Chef de Partie, also known as a station or section chef, reports to the Senior Chef and has a very important role in any kitchen.

Additional entry requirements:

- Level 2 qualification in a relevant subject area.

Level 1

Level 2

Level 3

Employment



Hospitality Team Member Apprenticeship

Level 2 • 18 months

As a Hospitality Team Member Apprentice, your role will be very varied and you will have to be adaptable and ready to support team members across the business, for example during busy periods. Specialist areas in hospitality include food and beverage service and food production.



I like how every day is different at LMC because we attract such a wide range of learners including year 10/11s from local high schools, ages 16-18 Full Time students and Part Time adults. It's nice to see people from all different backgrounds and cultures sharing a common passion for cooking.



Alessandro Possamai
Hospitality & Catering tutor

Hospitality Supervisor Apprenticeship

Level 3 • 18 months

As a Hospitality Supervisor Apprentice, you will study a range of core hospitality supervision knowledge, skills and behaviours and provide vital support to the management team and, ultimately, will be capable of independently supervising hospitality services and running shifts.

Additional entry requirements:

- Level 2 qualification in a relevant subject area.



Public Services



Public Services at LMC provides a range of experiences that demonstrate the scale and diversity of uniformed services. You'll have the opportunity to engage with a wide range of services and explore this exciting sector. Our courses are delivered by highly qualified, industry specialist tutors with knowledge across all key areas and the supporting infrastructure.

Proud to work with:



Industry insight...

Opens up career pathways Our courses provide vital preparation for Public Service recruitment and progression within the chosen Service. Students have enrichment embedded into the curriculum where they will learn important Public Service skills such as British Sign Language and Military Drill, as well as a variety of team building and problem solving tasks.





Scaling heights in order to gain a good career

As a student on one of our Public Services courses, you will be offered many opportunities to develop your understanding of service behaviours and requirements alongside working towards the fitness requirements.

This year, Public Services students went rock climbing in the local area. The aim of this trip was to develop their team building skills and experience working together. They learnt crucial safety tips, knot tying techniques and climbing to great heights, all skills which may be useful in the future.

“ Students on the Public Services course are given the chance to train with the Army Infantry Engagement Team on Campus.

With the Army team putting them through their paces they learn crucial team building skills, communication tactics and thinking on the spot to solve problems; all great skills to take with them in their futures!

”

Nick Clement
Public Service tutor



Progression opportunities

Progression opportunities include both direct service entry and progression onto Higher Education, such as degrees in Criminology, Social Justice, Law and Politics.

There is a wide variety of exciting roles within the Public Services, including:

- Soldier
- Royal Navy Officer
- Prison Instructor

Outside of the classroom

You'll be visited by guest speakers, each sharing their own experiences from different services, including Armed Police, Police Dogs, Fire and Rescue Service as well as multiple visits from the military services.

You will also take part in various activities to develop the skills and knowledge required in Public Services:

- Team building residential
- Army 'Look at Life' course
- Team building tasks

Full Time Courses

See page 26/27 for entry requirements

Sports & Public Services Pathway

Level 1 • 1 year

All Pathway courses at LMC provide you with a positive foundation into studying at College.

This course has been designed to support students who want to gain a basic knowledge in Public Services and who may not have the mainstream entry requirements for other courses.

Public Services

Level 2 • 1 year

This course is aimed at students who wish to pursue a career in one of Britain's Uniformed Public Services including the: Army, Royal Navy, Royal Air Force, Police, Prison Service and Fire and Rescue Service.

Uniformed Protected Services

Level 3 • 2 years

This course is aimed at people who are looking to gain entry into the Uniformed Protected Services, or Higher Education courses in the area. Throughout your time on the course, you'll speak to external speakers from different services and develop your understanding of service behaviour and requirements, alongside working towards fitness requirements.

Public Services HNC

Level 4 • 1 year

This course is geared towards a career in the varied and challenging Uniformed Protective and Public Services. You will develop your knowledge of public policies and how they are practically applied in UK Public Services.

You will also enhance your knowledge on the standards and behaviours that underpin public service organisations, which will prepare you for further study or employment. Engaging with LMC's network of industry professionals will allow you to build your own network of contacts in the public sector and enhance your employability skills.

Public Services HND

Level 5 • 1 year

This is a Full Time, one year course that is geared towards a career in the varied and challenging Uniformed Protective and Public Services. This course is usually taken after successful completion of the HNC Level 4 programme.

You will assess and evaluate your personal and vocational skills which are mapped to the requirements of employers in the UK Public Services including the Armed Forces, Police, Health, Prison and Fire & Rescue services amongst others.

Level 1

Level 2

Level 3

Level 4

Level 5



01524 521411

sport@lmc.ac



Sport

On a Sports programme at LMC, you'll have access to a fantastic range of activities and facilities, including our high specification all-weather 3G pitch, multi-use games area, the Fitness Suite and Sports Laboratory. Our courses are delivered by highly qualified industry specialist tutors who work across all key areas of professional sport and its supporting infrastructure. We develop professional sports teams onsite, including Morecambe FC.



Proud to work with:



Industry insight...

Strong Local Links After over thirty years of a successfully active partnership, Lancaster & Morecambe College (LMC) has become the main training base and match day venue for the Morecambe Football Club (MFC)'s Category 3 Academy.





Sport students complete work placements in Bulgaria

This summer 2023, a group of Sport students traveled to Bulgaria for 2 weeks of work experience at a youth summer camp.

The students worked alongside a local animation team, lead a range of activities including Water Gymnastics, Water Polo, Face Painting, Dancing and Night Entertainment for the camp residents.

“ Use the sports courses that LMC has to offer to your advantage as you will build relevant and practical skills needed for a career in sports. My success is proof and an inspiration to others wanting to pursue a career they are passionate about that you can do anything when you put your mind to it and be successful.

Armani Illingworth
Sport Level 2, Sport Level 3 and Sport Level 4 HNC

”



Additional opportunities

Students have the opportunity to take part in a range of activities that develop the skills and knowledge required to progress into the Sports and Leisure industries including:

- Opportunities to gain Coaching qualifications
- Opportunities for European visits for coaching and cultural experiences

Industry links

All courses offer industry placement opportunities that will develop the work based skills required for entry into the industry. Placement opportunities that students are supported in gaining include:

- Morecambe FC in the Community
- PE Teacher in secondary school
- Shadowing PE specialists in primary schools
- Leisure Assistant in a leisure centre
- Gym Instructor or Personal Trainer

Full Time Courses

See page 26/27 for entry requirements

Sport & Public Services Pathway

Level 1 • 1 year

All Pathway courses at LMC provide you with a positive foundation into studying at College.

This course has been designed to support students who want to gain a basic knowledge in Sport and who may not have the mainstream entry requirements for other courses.

Sport

Level 2 • 1 year

This course is geared towards a career in the fast growing industry of Sport. The course is suitable for school leavers who are seeking employment within the industry and provides a solid basis for progression to further study within this area.

Sport

Level 3 • 2 years

If you love sport or exercise, want a career in Sport and Leisure, or would like to study a sport related subject at university, this course is ideal for you. You will learn about aspects of sports development, fitness, and coaching, whilst completing industry placements and have access to the FA Level 1 Coaching qualification.

Sport HNC

Level 4 • 1 year

This course is geared towards a career in the fast growing Sports industry. You will develop your knowledge of the theory and application of sport and coaching within sporting environments. You will also assess and evaluate your personal and vocational skills, which are mapped to the requirements of employers in the Sports industry. During this course, you will also enhance your knowledge of the skills, and behaviours that underpin Sport to prepare you for further study or employment.

Sport HND

Level 5 • 1 year

This course is usually taken after successful completion of the HNC Level 4 programme and will develop your knowledge even further in Sport.

Additional entry requirements for all Sport courses:

To study all Sport courses you must:

- Demonstrate an appropriate level of fitness and sporting ability to take part in practical aspects of the course alongside an enthusiasm to study.

Level 1

Level 2

Level 3

Level 4

Level 5



Football Studies

Level 3 • 1 year

This course is suitable for those who value the importance of academic study and training. In essence, it offers an opportunity for you to gain a recognised qualification whilst working on your football ability, strength and conditioning, as well as your football ambitions. The course offers you the chance to be trained by a UEFA licenced coach, on a Full Time basis, as well as competing at a high level of football.

Additional entry requirements:

To study Football Studies Level 3, you must:

- Demonstrate evidence of good football skills and have experience at county/ club/weekend league participation



A training day with a difference for the Football students

The Football Academy students visited the National Training Centre at St George's Park National Football Centre to take part in a training day with Gamechanger Performance.

The students were able to sample the facilities available to elite athletes but also to compare their performance to members of the National team and see first-hand the standards expected within these elite environments.



Travel & Tourism



Travel & Tourism at LMC is the starting point to your dream of travelling the world. Students can choose to become Cabin Crew or to explore a variety of careers in the Travel & Tourism industry. Our tutors will use their years of experience in the industry and in depth knowledge of the travel sector to give you all the tools you need to succeed. Your round the world trip starts here!

Proud to work with:



Industry insight...

Opens up career pathways Many of our students progress into Full Time employment within the industry upon completion of their courses. Previous students are now Cabin Managers at Easy Jet, Holiday Representatives and some are travelling around the world following their dreams.

Sustainability



- Travel & Tourism students use of technology, including VR headsets aids in creating a more sustainable learning environment.



Tourism students complete work placements in Italy

In summer 2023, a group of Travel & Tourism students arrived in Italy for a 2 week international work placement. After some initial sight seeing around Rome, they dived straight into their work.

One project they were involved in included a visit to the local Chamber of Commerce to find out about the current business/tourism scene.

The group were able to present their findings at a Rural Tourism event, providing their recommendations for improvement, development and ideas for increasing tourism in the area.

This year our Travel and Tourism Level 2 and Cabin Crew students visited Liverpool John Lennon Airport and FlyBe.

“ The best thing about the course was learning about cabin crew and the travel industry from behind the scenes. My biggest accomplishment was definitely securing the role of cabin crew with TUI Airways.

Ellie Foulds,
Air Cabin Crew Level 2

”



Progression opportunities

Following the completion of a Travel & Tourism course at LMC, many students will have the opportunity to work in the industry in a variety of exciting roles such as:

- Airline Customer Service Agent
- Event Coordinator
- Holiday Representative

Students can also progress onto a related university course, such as BSc (Hons) Tourism Management, available at many universities across the country.

Industry placements

Our students take part in industry placements, which provide them with the tools to develop their skills and gain real-world experience in the industry.

We have strong links with well-known industry names such as:

- TUI
- Parkdean Resorts
- Jet2holidays

Full Time Courses

See page 26/27 for entry requirements

Travel & Tourism

Level 2 • 1 year

This course will open your horizons to the industry and is full of opportunities. Students wishing to gain detailed knowledge, skills and experience in the tourism sector will thrive on this course. You will gain skills that are current, relevant, and topical, to create a sound foundation for either working in the industry or progressing onto the Level 3 course.

Travel & Tourism

Level 3 • 1 year

Level 3 Travel & Tourism is the perfect gateway into the exciting industry. It is a great choice if you are looking for an exciting role, which could take you around the world. You will gain an insight into all relevant sectors of the industry and our expert tutors will teach you the necessary skills to prepare you for life in the profession.

Air Cabin Crew

Level 2 • 1 year

This exciting qualification is designed to assist students in finding their first role working in Cabin Crew. The role of Cabin Crew Team Member is a diverse, social and well-travelled career that is popular among our students. The course is designed for students who want broad-based vocational preparation for employment in a Cabin Crew role, and covers everything from preparing for interview days, practical elements working inside the cabin, and first-hand experience from ex Cabin Crew tutors.

Additional entry requirements:

To study this course you must:

- Be 17 or over

To be an Air Cabin Crew member, you must:

- Be at least 5'2"

Looking for a Part Time course?

If you are interested in a part time or distance learning course, we also offer:

- **Principles of Customer Service - Level 2**

For further information lmc.ac.uk/courses/distance

Level 2

Level 3

Employment



Multiply

FREE Skills Sessions for Adults

What is Multiply?

Multiply is a national programme that offers access to free courses intended to help you become more confident with numbers. If you need help in managing your bills, budgeting or you want to improve your potential at work, then a **Multiply course** is for you.

What courses do we offer?

GCSE SUPPORT

This course is aimed at adults studying GCSE or thinking about doing so in the future

COOKING FOR A FAMILY ON A BUDGET

This course will boost your confidence in the kitchen, and help you to cook and prepare a 2 course meal for your family, whilst learning about portions, sizing up and cost control.

TRY BEFORE YOU BUY FUNCTIONAL SKILLS

This course offers you a chance to see what Functional Skills is all about before committing to a class.

Other courses available:

Help for Homework • Money in Your Pocket • Maths Made Easy • Digital Maths Games Night • Digital Safety • Adult classes

Interested...

For further information multiply@lmc.ac.uk • lmc.ac.uk/multiply



To find out more call

0800 306 306

or visit

lmc.ac.uk

Follow us @lmcollege



Disclaimer

Lancaster & Morecambe College has published all information about the courses it intends to offer in good faith and warrants that classes will be delivered with reasonable care and skill. The College reserves the right to cancel any class and vary the time, location, direction and content of any class it provides and the associated fees.

Lancaster & Morecambe College hereby expressly excludes liability for any indirect or consequential loss arising from its actions and limits compensation to a maximum of a full refund of any fees paid or the offer of a class of equivalent value.

Data Protection

The College will hold and use the information you have provided on your application or enquiry to inform you about studying at LMC. Your details will be retained until the autumn of your intended year of study or for two years if you are in year 10 at school. Your personal data will not be passed on to any third parties for marketing purposes. You can tell the College that you no longer wish to receive information from us by emailing us at hello@lmc.ac.uk or calling us on 0800 306 306. To access the College's privacy notice about the use of students' personal data, please visit the College website: lmc.ac.uk and go to LMC Privacy Notice.

Open Days

Open Evening with guests from HE

Wednesday 18 October 2023, 4.30pm-7pm

Open Evening

Tuesday 28 November 2023, 4.30pm-7pm

Apprenticeship & General Open Day

Tuesday 6 February 2024, 4.30pm-7pm

Open Evening

Wednesday 20 March 2024, 4.30pm-7pm

Open Evening

Wednesday 1 May 2024, 4.30pm-7pm

Community Open Day & Taster Sessions

Saturday 6 July 2024, 11am - 3pm

Summer Open Day

Thursday 22 August 2024, 11am - 3pm

lmc.ac.uk/events

We love welcoming prospective learners, parents and carers to our open events throughout the year. If you are unable to attend one of our scheduled events, or you would rather visit LMC when it is a bit quieter, we can arrange small tours of the campus for individuals and school groups.

Just email us at schools@lmc.ac.uk for more information.



Lancaster &
Morecambe
College

Lancaster & Morecambe College,
Morecambe Road, Lancaster LA1 2TY

@lmcollege

