



Lancaster &  
Morecambe  
College

Celebrating 200 Years of Learning

Full Time, T Level &  
Apprenticeship Courses

# College Guide

2025/26



# How to apply

## STEP 1

Apply on our website [lmc.ac.uk](https://lmc.ac.uk).

Look for the pink apply button

**Apply ✓**

You'll need to create an account first.

## STEP 2

Choose your appointment time.

## STEP 3

After your interview, you can accept or decline your offer via your account.

If you need any assistance at your interview, contact our Learning Support Team on **01524 521571** or see the [Learning Support](#) section on our website.





*With thanks to local artist Chas Jacobs for the amazing artwork, which was commissioned to celebrate 200 years of Lancaster & Morecambe College in 2024*

# Welcome

I am delighted to welcome you to our new **College Guide for 2025/26**, which is designed to provide you with an insight into what our College has to offer.

The number of opportunities available to today's students are varied, and it is important that you have all the information you need to make the best choices for your future. We know that for some young people, the option to stay on at school can be the right choice, but we would welcome the opportunity to meet with you personally, show you around our fantastic campus and discuss the range of courses available at the College.

At LMC, we are focused on preparing our learners for real careers, independence and positive progression when they graduate from College. We offer a wide range of support to ensure our students are self-directed and highly motivated, and you will find details of all of this - and much more - in this College Guide.

We are proud of our well-established links with over **700 employers** and are fully committed to providing excellent opportunities for learners to gain valuable industrial experience as part of their course. Our core values - **Collaborative, Inclusive and Aspirational** - form the foundation of daily life at LMC; from ensuring that everyone feels safe, respected and valued, to helping our students progress whether into Higher Education or their chosen career pathway.

Please take some time to read through the Course Guide and familiarise yourself with the opportunities that are available to all students at LMC. I look forward to welcoming you to our campus at one of our upcoming **Open Events** and showing you around our amazing facilities and learning spaces.

**Daniel Braithwaite**, Principal

# What's New @LMC?

## Outdoor/Indoor Courtyard

This new outdoor/indoor space was created over the summer of 2024 to ensure our students had somewhere they could relax, away from the hustle and bustle of the The Lounge. Come rain or shine, **the new courtyard space is vape free** and hosts our **200th Birthday artwork** from local artist, **Chas Jacobs**, as well as our **LMC Timeline** of events over the last 200 years.



## New Teaching spaces

We are constantly **improving our campus** to create a safe and modern learning environment for the whole College community. We currently have extensive renovations taking place with the development of **new learning spaces** in C block and **two new teaching laboratories** in B block.



*Open plan learning for collaboration*



*Improved technology*



*Quiet breakaway areas*



*Modern classroom spaces*

# Coming soon

## Morecambe Bay Curriculum Passport

Are you interested in the environment?

Would you like to gain a passport to support your future career?

This free programme covers **climate change, renewable energy, nature, biodiversity, food production, the local impact, the impact of your industry on the environment** and so much more over 3 training days. The **Morecambe Bay Curriculum Passport** is supported by local employers and is a great opportunity for extra-curricular activities at LMC.

## AAT Professional Accounting Level 4 Diploma

This **part time AAT Level 4 course** is the final level of an **AAT qualification** and upon completion, you have gained the full **AAT Accounting Technician qualification**. We are looking forward to introducing this career path into our curriculum over the next year and hope that it can be seen as a goal and aspiration for our Level 1, 2 and 3 students to reach for.

## Civil Engineering

We are launching a new Civil Engineering course, which is the design, construction, and maintenance of the built environment, including public works and infrastructure, keep an eye on our website for further information.



# Why Choose LMC?



We have **invested over 16 million pounds** into our campus



We have links with over **700 employers** and provide excellent opportunities for students to gain **valuable industrial experience** as part of their course



Last year over **100 students** travelled overseas as part of their course to countries including **Mexico, America** and **Canada**

**94%**  
**of students**

rated the student support (pastoral, CEIAG, student money etc) as good or better

**AND** rated the teaching on their course as good or better

“Going to college was the best choice I ever made. I have made so many friends, learnt so many things and it's just a pleasant experience over all”

## Our Values



Collaborative



Inclusive



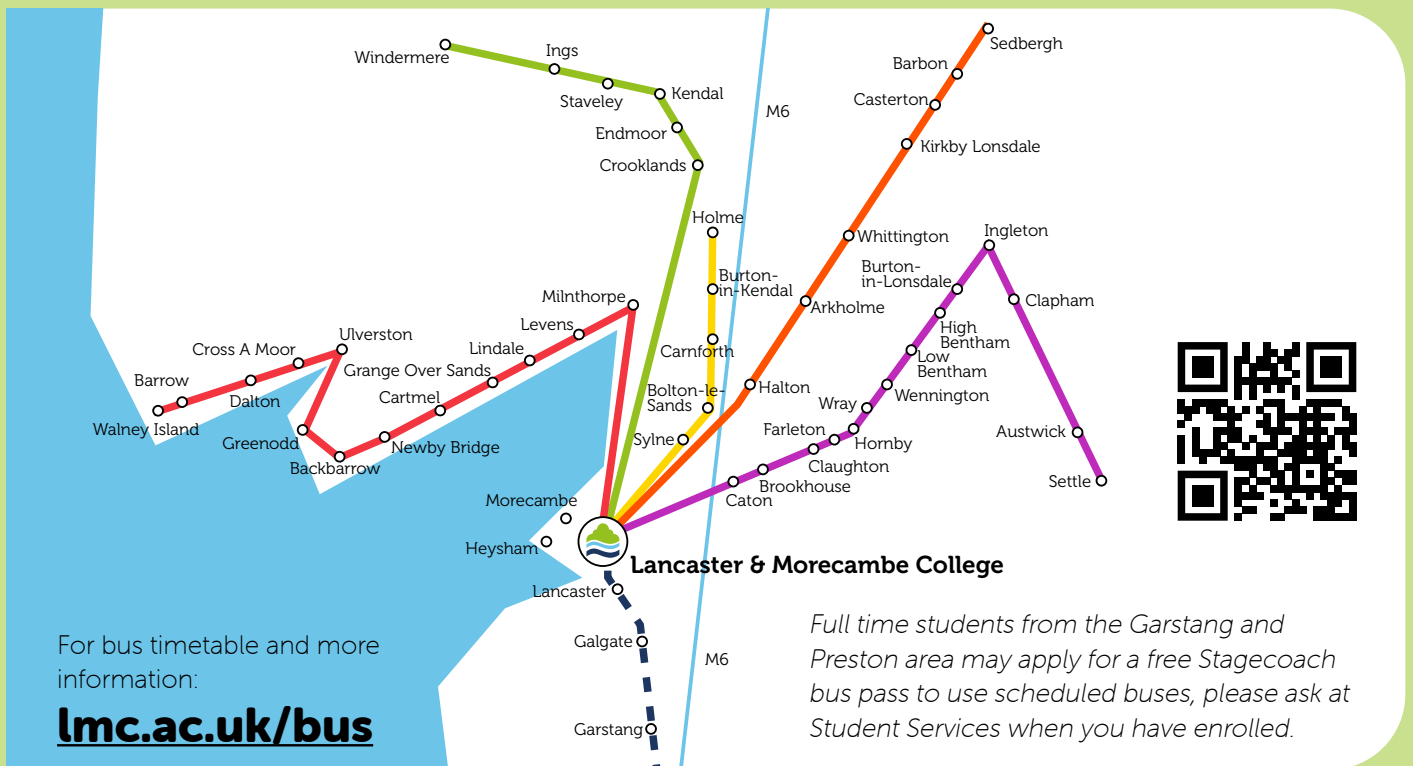
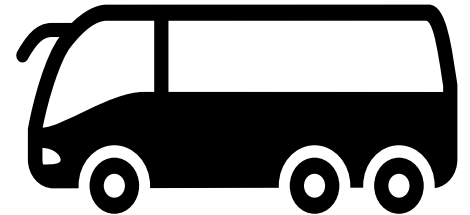
Aspirational



# Free Bus Service

We know that many people who would like to study with us live some distance away from Lancaster & Morecambe College; that's why we offer **Full Time students daily return transport** during term time.

Even if you don't live on a College bus route, you may still qualify for **free or discounted travel** to LMC.



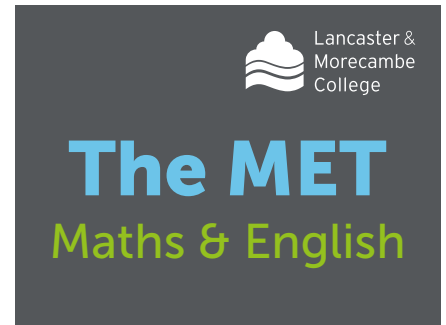
# Maths & English

We are delighted that, in September 2024, we were able to launch **The MET**, our brand new, dedicated Maths & English building on campus so that students on these courses have a calming environment to undertake their studies.

No matter which course you take at LMC, our aim is to help you progress into your chosen career and the majority of employers now look for a minimum GCSE grade 4 or Functional Skills Level 2 in Maths & English.

It is a UK Government requirement for all students aged 16-18 to study Maths & English alongside their vocational course, if they haven't already achieved GCSE grade 4 or Functional Skills Level 2.

At LMC, we offer two levels in each subject; **GCSE** and **Functional Skills**.



## Maths

**Progress Maths** classes teach learners to the standard required to achieve up to a GCSE grade 3. Learners may take a Functional Skills qualification or the GCSE exams in May/June, depending on their preference and abilities.

**GCSE 4/5 Maths** teach learners to the standard required to achieve a GCSE grade 4 or 5 on the Foundation Paper. All learners will sit the GCSE exams in May/June. Learners with a GCSE grade 3 will be placed in these classes.

For more information: [lmc.ac.uk/maths-english](https://lmc.ac.uk/maths-english)

## English Language

**Functional Skills English** classes teach learners to the standard required to achieve up to a Functional Skills Level 2. Functional Skills English qualifications are very different to English Language GCSE exams, as they focus more on English skills for the workplace.

**GCSE English** classes teach learners to the standard required to achieve a GCSE grade 4 or 5, and the exam papers allow all grades up to Grade 9 to be achieved. All learners will sit the GCSE exams in May/June. Learners with a GCSE grade 3 will be placed in these classes.





## T Levels @LMC

T-Levels are new two year qualifications that offer a **blend of classroom based learning and real work experience**, giving you a head start into employment. They have been designed to give students the opportunity to develop the skills, technical knowledge and behaviours that employers look for and are **equivalent to three A Levels**. Upon completion, you can progress within your chosen career, onto a higher level Apprenticeship or into Higher Education.

The qualifications have been developed in conjunction with leading employers and education providers, and include significant work experience (a minimum of 315 hours on industrial placement) alongside a structured curriculum giving you in-depth knowledge of your chosen subject and sector.

## T Levels on offer

- **Animal Management** Level 3
- **Design & Development for Engineering & Manufacturing** Level 3
- **Engineering & Manufacturing - Maintenance, Installation and Repair - Mechanical** Level 3
- **Education & Early Years** Level 3
- **Health** Level 3
- **Business - Management & Administration** Level 3
- **Foundation Year Education & Early Years** Level 2

For more information: [lmc.ac.uk/courses/T-Levels](https://lmc.ac.uk/courses/T-Levels)



# Apprenticeships

An Apprenticeship is a real job where you learn, gain experience and get paid. You're an employee with a contract of employment and holiday leave. By the end of an Apprenticeship, you'll have the right skills and knowledge needed for your chosen career.

It can take between one and six years to complete an Apprenticeship depending on which one you choose, what level it is and your previous experience. It's funded from contributions made by the Government and your employer.

## What are the benefits of an Apprenticeship?

### Skills, knowledge & behaviours

An Apprenticeship is all about developing new skills, knowledge and behaviours within your chosen sector. Whether you choose to stay with your employer on completion, study at a higher level or train in a new area, many of these new skills will be transferable and set you up for life!

### Real job benefits

As an apprentice, you will have a contract of employment with the employer, which could typically include all regular employee benefits such as holiday allowance, bank holidays, pensions and continuous professional development (CPD).

### Earn as you learn

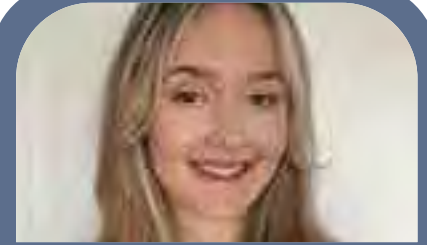
As an apprentice, you will 'earn as you learn'. Although salaries will vary by employer, if you are under the age of 19 or in the first 12 months of your apprenticeship, you are entitled to at least the National Apprenticeship Minimum Wage. You will also be paid during any 'off-the-job-training'. Some employers may pay more than National Apprenticeship Minimum Wage. For information on National Minimum wages, please visit: [gov.uk/national-minimum-wage-rates](http://gov.uk/national-minimum-wage-rates).

### Fee free qualifications

Apprenticeships are becoming a popular alternative to university for students wishing to begin a career whilst continuing their education. Unlike a university course, you will not have to pay for your qualifications during your training as the costs are covered by either the Government or your employer.

### Employability & career prospects

Your Apprenticeship will give you nationally recognised qualifications and key skills, which will be hugely beneficial to career progression and future employability prospects.



## Elle Walsh

**Course: Business Administration  
Level 3 Apprenticeship**

**Profession: Marketing Assistant  
with Clarke and Pulman**

*I chose this Apprenticeship as it aligns with my desired career path. The staff at LMC are incredibly supportive and helpful, no question or request is too big. They provide outstanding support in your workplace, which has been a huge help with my theory work. The End Point Assessment is also exciting. I'm looking forward to planning it, as I can use my own experiences and put a creative spin on to develop my own marketing campaign.*

Elle has found the Apprenticeship to be an enjoyable learning experience, as she has gained practical marketing skills in a real work setting.

*From my experiences on the Apprenticeship, I am now confident in my ability to perform as a Marketing Assistant in a professional environment. The knowledge and skills I have gained will benefit me throughout my career and have fuelled my confidence and motivation for my future.*

Elle's role at Clarke and Pulman is something she really enjoys; there is always something different to do each day.

*Based on my experience, I recommend the Apprenticeship with LMC, as it will help you to improve your skills and self-assurance when working professionally.*

## Apprenticeship courses:

- AAT Accounts Assistant Level 2
- AAT Assistant Accountant Level 3
- Bricklaying Level 2
- Business Support Level 3
- Carpentry & Joinery Level 2
- Carpentry & Joinery Level 3
- Commis Chef Level 2
- Chef De Partie Level 3
- Customer Service Practitioner Level 2
- Early Years Practitioner Level 2
- Early Years Educator Level 3
- Fire Emergency & Security Systems Technician Level 3
- Gas Engineer Level 3
- General Welding Level 2
- Hairdressing Level 2
- Hospitality Team Member Level 2
- Hospitality Supervision Level 2
- Information Communications Technician Level 3
- Lift Truck & Powered Access Engineering Technician Level 3
- Maintenance & Operations Engineering Technician Level 3
- Operations/Departmental Manager Level 5
- Plate Welding Level 3
- Plumbing & Heating Level 3
- Production Chef Level 2
- Senior Production Chef Level 3
- Teaching Assistant Level 3
- Team Leading Level 3

For more information: [lmc.ac.uk/apprenticeships](https://lmc.ac.uk/apprenticeships)



# We're Here To Help

We know that starting College can feel like a huge step but we are here to help you settle in and find your feet. Our friendly staff will offer you advice and support; from the moment you first apply for a course, right through to your final day at LMC.

Based within **The Hex Student & Learning Centre**, the Student Engagement team can help with **financial support, course information, careers guidance, UCAS applications, CVs and resources** – you don't need an appointment, just pop in for a chat at anytime.



Pay My Student



## Financial Support

We want to ensure all learners are aware of our **Student Money team**, who are here to help identify and access any financial support you may be entitled to whilst you are studying at College. They can advise you on all financial matters including; the **Learner Support Fund (LSF)** and **16-18 Vulnerable Bursary** and may also be able to help you with travel expenses, course costs such as uniform, educational visits and equipment, childcare fees and lunches. Just call into The Hex to speak with them or email [studentmoney@lmc.ac.uk](mailto:studentmoney@lmc.ac.uk)

- Learner Support Fund
- 16-18 Vulnerable Bursary
- Childcare
- Travel Costs
- Breakfasts & Lunches
- Advanced Learner Loans

Visit: [lmc.ac.uk/support](https://lmc.ac.uk/support)



## Equality, Diversity & Inclusion

This is embedded across everything we do, to ensure that all members of the College community have an **equal opportunity to maximise their potential** and are equally valued and treated with respect.

## Secure Campus

The College uses secure door access controls and all students, staff and visitors must use their **lanyard** to swipe in to buildings and to access any part of our campus. We have active **CCTV cameras** around our whole campus and **on-site security** to keep our students safe all year round.

# Stay safe on campus

## Wear your lanyard



## Safeguarding

Every single student, staff or visitor on campus must wear a lanyard at all times to stay safe and show you belong.

Our **Pastoral Mentors** work closely with the curriculum teams to ensure all of our learners are able to access advice across a wide range of **health, welfare and safeguarding issues**. All students can chat with our pastoral team about any concerns they may have in **The Hex between 8:30am - 4pm** each day, via teams or by texting their area specific mentor to book an appointment.

## Learning Support

We pride ourselves at LMC on the support we provide to each of our students to enable them to achieve. All students can apply for support to help them access our courses.

If there is anything that could get in the way of your learning and participation at College, please speak to your tutor or one of the support team prior to starting on your course. The team will work with you to develop your skills, confidence, motivation, independence and expertise in learning.

### Support may include:

- **Advice and referrals** to a range of other specialist services
- Support with your **wellbeing**
- **Assistive technology**
- **Mobility support**
- **Exam arrangements**
- Help with coursework/homework
- **Laptop loans**
- **Extra support** in as well as out of class
- Access to **support online** to fit in around you



To find out more contact  
[learningsupport@lmc.ac.uk](mailto:learningsupport@lmc.ac.uk)  
**01524 521245**  
[lmc.ac.uk/support](http://lmc.ac.uk/support)



Or complete our online contact form

“We realise that every student is different and do what we can to make College accessible and inclusive to all”



# LMC Goes Green

## Green Careers Champions

In 2023, LMC was recognised as **Careers Champions** by the national **Careers & Enterprise Company** for our innovative approach to embedding sustainability and environmental education into our whole campus. A number of LMC tutors and careers staff have completed the **Level 4 Teaching & Learning for Sustainable Development qualification**, to help embed environmental education into our curriculum and careers programme, providing our learners with relevant and up-to-date vocational knowledge, which will support them to progress into their chosen career.



## Green campus

We are fortunate to have a spacious campus with plenty of green space, where we have created **rewilding areas**, **animal-friendly habitats** and a **kitchen garden** - and our learners are able to get involved and support these projects by becoming **LMC Green Champions**.

## Morecambe Bay Curriculum Green Passport

As a founding partner in the innovative **Morecambe Bay Curriculum** (MBC), a place-based initiative that aims to provide the green skills, knowledge and behaviors required by regional and national employers, our learners are able to take part in a new venture, accessing environmental training sessions with our partners at Lancaster University and Myerscough College, and gaining the **MBC Green Passport**.



*Harvesting apples on campus*

For more information: [lmc.ac.uk/sustainability](https://lmc.ac.uk/sustainability)



Cat Smith visit



Care home make-over



Christmas charity boxes

# Student Voice

## Volunteering • Class Reps • Student Ambassadors

Volunteer in the community!

As a participant taking part in **Youth Social Action (YSA)**, you will be involved in activities that make a positive impact on society. It will mainly involve young people taking up opportunities to **address social issues** in the community, **volunteer**, **fundraise**, or **advocate for causes** they care about. This engagement will help develop important skills, gain valuable experiences, and contribute to your community in a meaningful way. We encourage and support students to put their ideas forward for any projects they would like to be involved in.

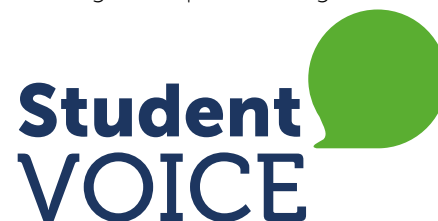


Have your say as a Class Rep!

We value student involvement in helping to shape the College community and being a **Class Rep** is an important opportunity to represent your classmates. You will also get **free food** for attending any conferences/ meetings.

Promote College!

As a **Student Ambassador**, you will have the opportunity to help in a range of **marketing related activities**, such as **school visits** and **open evenings**. The role is intended to provide a current student's perspective of College. There is **opportunity for paid work** when assisting with open evenings.



For more information:  
[lmc.ac.uk/studentvoice](http://lmc.ac.uk/studentvoice)



# Careers Advice & Guidance

## CEIAG

Our **Student Engagement Team** is here to provide all of our learners and apprentices with **information and advice** on courses, **entry requirements and course and exam fees**; from your first visit to campus for an Open Day, right through to you completing your course and graduating from College, they will support you to find the right information for your individual needs and future plans.

Our **Careers Programme** has been designed to meet the needs of all of our learners, through a range of structured tutorials, sector-specific events and targeted workshops and sessions. Our tutors are all experts within their industry and embed their knowledge and experience into the curriculum and courses.



“The careers programme is delivered at various stages throughout the year and a key feature is how it has been skilfully woven into the curriculum and classroom sessions.

Learners described becoming increasingly confident, improving their personal development skills, developing employability skills, gaining employment, improving mental health, and progressing into a positive destination

because of the embedded CEIAG”

For more information:

[lmc.ac.uk/student-life/careers](https://lmc.ac.uk/student-life/careers)

*Matrix June 2023*



# Facilities

As we continuously develop the campus to meet our sustainable goals, all of our facilities are at the center of improvements. We are fortunate to have an **open green campus** with many outdoor areas and sports pitches, which you can explore on all of our **Open Days** throughout the year.

## Immersive 360° VR Suite

Our Sustainable Energy Hub includes an immersive 360° Virtual Reality suite to enhance your learning experience. Each subject area will have access to this fantastic facility, whether you're an Engineering student seeing what it's like to be on top of a wind turbine, or a student in Travel & Tourism researching popular holiday destinations around the world.



## The Salon

Our fantastic, modern salon offers **hair and beauty treatments** of all kinds and is open to the public and students at great prices. The Salon is an oasis of tranquility helping you unwind away from the bustling campus.



## The Lounge

The Lounge is your social space to meet with friends, relax and enjoy excellent, varied, affordable hot and cold food options or snacks. If you arrive between 8:30am and 8.55am, you can choose **porridge, toast or fruit and either tea or coffee for FREE** to start your day in the best way possible.



## The Hexagon Student & Learning Centre

At the heart of our campus, The Hex is home to our helpful **Student Engagement team** and **Pastoral Mentors**. You can access laptops, PCs and other College resources, as well as gain careers guidance and student money advice, all in one safe space.

## The Courtyard

This is a peaceful, vape-free outdoor area that is covered by a canopy for all year round access, just off The Lounge. This space also holds our **200th Birthday artwork** from local artist **Chas Jacobs** and our **200 Anniversary timeline**, showing the developments of College over two centuries.

## The Shop

In a hurry? The Shop is a great stop for a **quick snack, meal deal** or even some **baked goods**. We also stock must-have items here like stationery, cards and even hygiene products like body sprays and sanitary products (*for free of course*).



*Creative Digital Media students trip to New York*



*Hospitality & Catering and Business students on a trip to Italy*



*Travel & Tourism students on a trip to Mexico*

# International Work Placements

Whichever course you choose, you'll have the opportunity to take part in work experience visits within the UK and potentially abroad!

We were lucky last year to secure funding to continue our worldwide trips through the **Turing Scheme**, allowing us to send students to places such as **Mexico, New York and Canada**. In 2024/25, we have extended this offer to include fully-funded work placements in **St Lucia in South Africa**, and also **Alicante, Spain and Pescara, Italy**.

Not all of our trips are funded, but if you are eligible for financial support, you will not have to pay to take part - please see the Student Money section for more information.

For more information: [lmc.ac.uk/international](https://lmc.ac.uk/international)

“ The trips really helped me develop confidence, learn key skills and experience new opportunities, and I have now started a full-time job supporting students to get involved in community projects and volunteering ”

## Industrial Placements

Industry Work Placements are an innovative way to enable you to develop the key skills and knowledge required to get ahead in your career, and **all of our Full Time learners** have the opportunity to take part.

Depending on which course you choose, you could spend up to **45 days on placement**, gaining crucial skills, building confidence and developing knowledge of a variety of different roles and responsibilities within the workplace.

# Entry Requirements

Most courses we offer have certain entry requirements you will need to meet before studying with us. All courses require **an interest in the subject and a willingness to learn**, but some may have additional requirements such as a portfolio of work; exact entry requirements will be detailed on the specific course page. Although you may meet our entry requirements on application, course offers are decided after your interview with the subject tutor.

If you're a school leaver and haven't received your GCSE grades yet, we'll base our course offer on your predicted grades. If you don't meet the entry requirements, you'll either start on a lower level course or our careers advice team will assist you with finding the right course.



<b>5</b>	<b>Foundation Degree</b> FdA or FdSc	<b>HND</b> Higher National Diploma	<b>Higher Apprenticeship</b>
<b>4</b>	<b>Foundation Degree</b> FdA or FdSc	<b>HNC</b> Higher National Certificate	<b>Higher Apprenticeship</b>
<b>3</b>	<b>A Levels</b> Grades A-E	<b>T Levels &amp; Level 3 Certificate</b>	<b>Advanced Apprenticeship</b>
<b>2</b>	<b>GCSE</b> Grades 4-9	<b>Level 2 Diploma</b>	<b>Intermediate Apprenticeship</b>
<b>1</b>	<b>GCSE</b> Grades 1-3	<b>Level 1 Certificate</b>	
<b>Entry</b> 1,2 and 3 <p>These are foundation level studies which provide Basic Skills/Skills For Life and a pathway to a Level 1 qualification</p>			

Academic

Applied/work

Vocational

# Information for Parents & Guardians

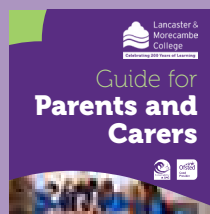
We're focused on preparing our students for **real careers, independence** and **positive progression** in the future, with a set of skills and experience that sets them apart from the competition.

**94%** of students progress onto university, employment, or further study upon completion of their course, and were proud to have strong links with local Higher Education providers and employers across the region.

Learners and apprentices work well together with their employers, peers and their tutors. Consequently, they effectively develop skills such as **confidence, resilience, patience, communication** and **independence**. Learners develop an understanding of living in a **diverse community** and appreciate and understand each other's differences.

For more information:

[lmc.ac.uk/parents-guardians](http://lmc.ac.uk/parents-guardians)



Download our

**Guide for Parents and Carers**



Download our

**Adult Courses Guide**

## 14-16 & Home-Educated Provision



We may be able to offer learning opportunities and individualised programmes of study to pupils aged **14-16**, including young people who are **home-educated**.

**14-16 School Referrals** must come from the pupil's current school, education establishment, social services or the local authority, who must agree to fund the placement. LMC cannot accept private funding.

Options may include:

**Childcare, Animal Studies, Digital Technology - All full time courses include Maths and English.**

Young people who are currently home-educated may be eligible to attend LMC to study on a vocational pathway to support and enhance home learning. Our usual entry criteria will apply and will be used to establish the learner's suitability, including an assessment on whether we feel the young person can thrive in the College environment.

All enquiries should be made direct to Clare Benson [C.Benson@lmc.ac.uk](mailto:C.Benson@lmc.ac.uk) or Carole Clare [C.Clare@lmc.ac.uk](mailto:C.Clare@lmc.ac.uk)

For more information: [lmc.ac.uk/14-16](http://lmc.ac.uk/14-16)

Find us on social [@LMCollege](https://www.instagram.com/LMCCollege)



# Ask Ash...

Some of you will recognise Ash, our **School & Community Engagement (SCE) Coordinator**, as he and the rest of the SCE team attend lots of events across the district and in all of our local schools. He is always available to help answer any questions you have about life at LMC.



## "Can I have a part-time job while at College?"

Yes, many students **work part-time** while studying. Just make sure you can juggle your work and studies well. It's all about balance - don't let short term money get in the way of your long term ambitions.

## "What's different about College compared to school?"

When you join LMC, you'll notice some big changes from school. You'll have way **more independence** - meaning you'll need to manage your own time and workload. Classes are usually smaller, so you'll get **more one-on-one time** with your tutors. Plus, the focus is more on **hands-on skills** that are tied to your career. Your timetable might also be **more flexible**, letting you dive deeper into subjects you're interested in.

## "What support will I get at College?"

There's loads of support available at LMC. For anything about your course, your tutor or **course administrator** will help you out. If you need help with **wellbeing, careers advice**, or things like **transport and student finance**, our friendly support teams in **The Hex** can help you. Whether it's personal or course-related, there's always someone here for you.

## "Do I need to wear a uniform?"

Nope, you don't need to wear a uniform at College. You can **wear what you like as long as it's comfy and appropriate** for a learning and work environment. Just a heads-up: some courses have **specific PPE** and **safety clothing**, which you will have to wear in workshops and salons, but your tutors will let you know about that during induction.

## "How can I make new friends and get involved in College life?"

There are plenty of ways to make friends at College. Firstly, you'll meet your classmates during **induction week**, and the **Welcome Fair**, hosted a few weeks after you start, will allow you to meet students from other courses. There are also student opportunities, such as the **Student Voice** and **Student Ambassador schemes**, which will allow you to meet other students and develop your skills at the same time. Don't be shy - connect with your classmates, and you might even see some familiar faces from school when you're around campus!

## "What if I need to talk to someone about my wellbeing whilst at College?"

If you ever feel like you need to talk to someone, our **Pastoral Team** at **The Hex** is there to support you. You'll have a **mentor** linked to your course who you can chat to anytime during the week. They offer confidential advice and can point you towards **mental health resources or wellbeing tips**. If you're worried about anything serious, our **safeguarding team** is available to help too.

## "How do I find out about the bus to College?"

LMC has a **FREE bus service** for students living in **North Yorkshire, South Cumbria** and the **Lune Valley**. You can check out the bus routes and timetables on our website: **lmc.ac.uk/bus**. If you're using a public bus, you may be entitled to help with the cost of a bus pass so speak to our **Student Money team**.

The College is well-connected with public transport, with bus stops close to either entrance, you'll need to check Stagecoach's website for their routes and timetables.

Our Student Services team can help with any questions, including info on student travel discounts.

## "What's the best way to get ready for College?"

Before starting, it's a good idea to get familiar with the campus and check out the support services available. Make sure you've got your course materials sorted and any tasks done that were suggested during induction. If you have a part-time job, plan your schedule so it fits around your College timetable. Attending any pre-college events will help you feel more prepared, and don't hesitate to ask your tutors if you've got any questions.

**Any further questions, please get in touch!**  
**[hello@lmc.ac.uk](mailto:hello@lmc.ac.uk)**

# Our Courses...

Access to Higher Education	<b>24</b>	Foundation Education	<b>66</b>
Animal Studies & Science	<b>28</b>	Hairdressing	<b>68</b>
Art & Design	<b>32</b>	Health & Social Care	<b>72</b>
Beauty Therapy	<b>36</b>	Hospitality & Catering	<b>76</b>
Business	<b>40</b>	Sport	<b>82</b>
Child Education	<b>44</b>	Supported Internships	<b>86</b>
Creative Digital Media	<b>48</b>	Travel & Tourism	<b>88</b>
Digital Technology	<b>52</b>	Uniformed Protective Services	<b>92</b>
Energy, Engineering & Construction	<b>56</b>		

**[lmc.ac.uk/courses](http://lmc.ac.uk/courses)**



Proud to work with



# Access to Higher Education

The Access Diploma is specifically designed for people aged 19 years and over who want to progress onto university. Perhaps you've taken a break from education due to other commitments but have always dreamed of pursuing a particular career. Whatever your situation, the Access Diploma offers you the opportunity to gain a qualification that could open the doors to university for you.

*your future career could be*

Social Worker • Nurse • Midwife  
Primary School Teacher • Support Worker  
Radiographer • Youth Worker • Counsellor  
Mental Health Nurse & more



*Study at university...*

Opportunities leading to further study in **Nursing, Primary Teaching, Social Sciences and Social Work**



*Scan here for courses*





“ Laura Walker was fantastic at delivering the Access to HE course and preparing us for the next stage of University

Access to HE student, 2023 ”

## Full Time Courses

Level 3

University

See page 20 for entry requirements

### Access to HE

#### Level 3 • 1 year

The adult alternative to A Levels for ambitious adults who aspire to progress to university or improve their career prospects.

Previous students have progressed into various careers, including:

- **Nursing and Health Professions:** Adult Nurse, Mental Health Nurse, Midwife, Radiographer, Occupational Therapist, Physiotherapist and Paramedic.
- **Teaching:** Primary School Teacher, Learning Support Worker, Teaching Assistant and Special Needs Education Worker.
- **Social Work:** Social Worker, Counsellor, Probation Worker, Youth Worker and Welfare Officer.
- **Higher Education:** Degree options include for example: Biological Science, Business, Psychology, Humanities and Social Sciences.

#### Additional entry requirements:

A range of evidence may be considered when assessing an individual's potential to study an Access Diploma, for example; their life skills, previous employment, prior achievements and professional qualifications.

The general expectation, however, is that a student will:

- Have good Level 2 skills reflecting ability equal to 5 GCSEs at grade 4 or above, or any equivalent professional qualification; and
- Completion of the initial assessment to a satisfactory level.

The offer of a place will be determined by the following three factors:

- The student's performance at interview;
- The successful completion of the assessment; and
- The consideration of prior achievements and/or qualifications.

Different universities and courses have different entry requirements. It is the student's responsibility to check that these would be met when applying for an Access to HE Diploma. This could include subject specific GCSE grades and relevant experience.



### Bobby Bleasdale

**Course:** Access to HE Diploma

**Profession:** Midwife

Bobby first started her journey at Lancaster & Morecambe College when she finished high school and found the College to be friendly and supportive. In 2017, Bobby returned to College to study our Health & Social Care Professionals Level 2 part time course, which led her to progress to the Access to HE course.

The Access course allowed her to expand her academic skills such as how to correctly reference and structure her writing in preparation for university study. As well as developing her academic skills, Bobby also improved her critical thinking skills, which helped her when working in a stressful, high-intense environment such as the NHS.

Bobby graduated with an impressive first class honours in Midwifery, and now works as a midwife.

*In my job, I am responsible for the care of women and their families throughout their entire pregnancy journey. It's thanks to the course and my amazing tutors that I now have my dream career! I would highly recommend the course to anyone wanting to go to university. Without the Access course, I would not have had the opportunity as I left high school with just 1 GCSE.*

## News

Last year, one of our Access to HE students, Danny Stackhouse, was awarded Runner Up for the Outstanding Commitment to Study Award in the National Access to HE Excellence Awards via Ascentis, after being nominated by his tutors.





If you are looking for **Part Time** courses or to increase your qualifications before taking on the Level 3, we also have courses such as **Access Level 2**, **Access Level 2 Extended Certificate** and **Biology GCSE**. Please find more information about these courses on our website and in the Adult Course Guide.



Proud to work with



# Animal Studies & Science

Animal Studies & Science offers learners the opportunity to gain the required knowledge, skills and behaviours to progress onto further study or employment into land-based or science industries. Animal Studies learners will work with a range of species in our dedicated workshop spaces and Science learners will work in our brand new science laboratories. Learners will undertake work related activities as part of their studies.

*Your future career could be*

- Veterinary Nurse • Zoo Keeper
- RSPCA Inspector • Forensic Anthropologist
- Forensic Entomologist • Animal Biologist
- Forensic Scientist & more



300-400 job vacancies

are live at any given time in **Animal and Land-Based** careers in Lancashire



Scan here for courses



“ It has allowed me to gain further qualifications to progress onto university and a better career ”

Animal Studies & Science student, 2024

## Full Time & T Level Courses



See page 20 for entry requirements

### Animal Studies Pathway

#### Level 1 • 1 year

All Pathway courses at LMC provide you with a positive foundation into studying at College. This course is designed for anyone wishing to pursue a career in working with animals, and includes theory-based lessons where you'll learn how to care for animals, alongside practical workshop sessions.

### Land-Based Studies

#### Level 1 • 1 year

This course is an introduction to the Land-Based industries with a particular focus on animal care and welfare. It provides an opportunity to investigate job opportunities and to acquire appropriate workplace skills.

### Animal Care

#### Level 2 • 1 year

This course aims to provide you with an introduction to Animal Care, which could lead to employment at a junior level, or to the Level 3 Animal Management course. It will also help you to develop personal and administrative skills needed in this area of work.

## T-LEVELS

### T Level Animal Management

#### Level 3 • 2 years

This is a 2 year programme that will ensure you gain the knowledge, skills and behaviours required to progress to employment or Higher Education within the animal care sector.

The course has a practical approach to learning with on-the-job experience in the form of 45 days/315 hours (minimum) mandatory industry placement. You will gain experience of working with different animals within the College's specialist workshops.

### NEW Science

#### Level 2 • 1 year

This course is for anyone who is interested in a career in the science sector. It will offer the opportunity to build on your understanding, knowledge and skills in chemistry, biology and physics.

### NEW Forensic Science

#### Level 3 • 2 years

This course is for anyone interested in pursuing a career in criminology, policing, forensic science, forensic psychology and criminal investigation.

On this course, you will develop your analytical, evaluative, practical and interpretation skills to either progress onto university or into employment in the forensic and criminal investigative fields.



Emma Wright

**Course: Animal Management Level 3**

**Profession: Animal Care Assistant at Animal Care Lancaster**

Emma originally studied BSc Psychology at Lancaster University, and although she loved the course, always found herself drawn to the natural world. So, upon graduating, she decided to pursue her passion of working in the animal care industry.

*The College had a lovely atmosphere, and was easy to navigate. The animal care department also has some fantastic facilities, including a rodent room, exotics room, and an outdoor area for rabbits, guinea pigs, birds, and ferrets. The staff are very friendly and approachable, and always happy to answer questions or assist with a task.*

## Canada Trip

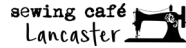
This year, our Animal Studies students visited Vancouver, Canada and experienced a work placement at OWL Orphaned Wildlife Rehabilitation Society. They visited Granville Market, Grouse Mountain, made their way to Greater Vancouver Zoo and also stopped off at Stanley Park, Lynn Canyon, Vancouver Aquarium and Vancouver Island.







Proud to work with



# Art & Design

An Art & Design course at LMC gives you access to fantastic industry standard facilities, surrounded by a team of designers and artists as tutors. Our students work with industry specialists in the local community and produce exciting portfolios of creative work, which demonstrate a wide set of skills. We encourage our students to be really ambitious about their future careers by applying to highly prestigious universities.

*your future career could be*

- Photographer • Art Editor
- Illustrator • Graphic Designer
- Fashion Designer • Interior Designer
- Costume Designer & more



The UK government aims to grow the creative industries by an extra **£50 billion** and create **1 million new jobs** by 2025



Scan here for courses





“ Choosing to study Art & Design will give you access to fantastic industry standard facilities and you'll work with a team of specialists as tutors ”

John Lambert, Head of Art & Design

## Full Time Courses



See page 20 for entry requirements

### Art & Design

Level 2 • 1 year

An introduction to the world of Art & Design, the course is developed to support those who would benefit from a more practical approach to learning, providing them with the transferable skills, knowledge and self-confidence required to progress to further education in Art & Design and/or employment within the creative industries.

### Art & Design

Level 3 • 2 years

If you are wishing to pursue a career in the creative industries, this course will cover a broad range of specialist areas in Art & Design including media, techniques, and a variety of practical skills to help you identify your creative strengths and develop a project using critical and contextual awareness.

### Art & Design Foundation Diploma

Level 3/4 • 1 year

This is an intensive one year course exploring a spectrum of design specialisms and builds a strong and diverse portfolio. The emphasis of the course is on experimentation and challenging preconceptions and is the perfect bridge to Higher Education.

### Art Practice HNC

Level 4 • 1 year

The Art Practice HNC Level 4 offers you a broad introduction and awareness of the key aspects of the creative industries sector through four core units; Professional Development, Contextual Studies, Individual Project, and Techniques and Processes. This effectively builds underpinning core skills gained in research, self-study, directed study and workplace scenarios.

### Art Practice HND

Level 5 • 1 year

The Art Practice HND Level 5 allows you to develop a sound understanding of the principles in your 'specialist pathway' of study. You will learn to evaluate varied approaches to problem solving, effectively performing in your chosen field with the required qualities for employment in the sector.

#### Additional entry requirements:

- A minimum of 64 UCAS points, PLUS GCSE Maths & English at grade 4 or higher, and have completed the HNC in Art Practice or similar



## Morecambe Winter Gardens Young Creatives

We are now partnered with the iconic Morecambe Winter Gardens, to offer an exciting programme for learners who wish to develop their skills and progress within the Creative Industries.

The two week work placement will showcase every aspect of theatre work and will open the door to further qualifications in the industry.



## Regular trips to support studies

Our Extended Diploma Art & Design and Foundation Diploma Art & Design students recently made a trip to Liverpool Cathedral to visit the UK-first exhibition by the internationally acclaimed sculptor Anish Kapoor.





## Competition winners

Standfast & Barracks, Lancaster called for budding artists to enter their Centenary Competition, and two of our students were selected as winners!

Mia-Bella and Poppy won the College/Sixth Form category, because of their use of vibrant colours and well thought-out compositions.

Both of them got to visit headquarters and watch their designs be printed in real time and explore the rest of the workshops as part of Standfast & Barracks 200th Anniversary celebrations.





Proud to work with



LONDON  
WELLNESS  
ACADEMY



# Beauty Therapy

Studying Beauty Therapy at LMC will give you access to our industry standard facility, The Salon, plus a team of highly experienced and specialist tutors. Through their extensive knowledge, you'll learn the skills and techniques needed to establish a career in the Beauty Therapy industry. If you choose to progress through the qualification levels, you'll gain confidence in your skills and knowledge and begin to develop your individual creative talent.

*your future career could be*

Nail Technician • Salon Manager  
Beauty Advisor • Make Up Artist  
Massage Therapist • Beauty Therapist  
Spa Attendant & more



46% of the workforce  
in the Beauty industry are  
**aged 16-34**, with male  
employee rates increasing  
year on year



Scan here for  
courses



- ### Preparing for a wax
- Have a bath or shower...
  - Buff away dry skin...
  - Wax or shave ahead of your treatment...
  - Avoid sun or tanning beds the day before...
  - Avoid hot showers the day before...
  - Stop for 24 hours before any anti-inflammatory and pericyclics...
  - Take some painkillers if you need them...
  - Apply talc to the areas to be waxed 24 hours before...

“ My daughter has learnt so much this year and is very proud and happy of her achievements ”

Parent of Beauty Therapy student, 2024

## Full Time & Apprenticeship Courses



See page 20 for entry requirements

### Hair & Beauty Introduction

#### Level 1 • 1 year

This course offers an introduction to the exciting and prosperous careers available in Hairdressing & Beauty Therapy. You will gain knowledge and new skills in a variety of basic Hairdressing & Beauty Therapy services.

### Beauty Therapy

#### Level 2 • 1 year

This course offers the opportunity to learn the skills necessary for employment in the Beauty Therapy profession. You will learn techniques which are in demand and on trend, with insight from employers in the Beauty Therapy industry.

### Beauty Therapy

#### Level 3 • 1 year

You will focus on advanced treatments, theory elements of business promotions, relevant health and safety, and advanced treatment techniques in the Beauty industry. You'll spend time gaining experience in LMC's real work environment, The Salon, and develop your customer care and communication skills, preparing you for future employment.

#### Additional entry requirements:

- Level 2 qualification in Beauty Therapy.

### Theatrical & Media Make-up

#### Level 3 • 1 year

Aimed at individuals who want to work within professional make-up or hair departments of TV, film, or theatre production companies, this course equips you with the knowledge required to progress onto university courses in Beauty Therapy.



### Pure Lakes

#### Award winning skincare

LMC now works with Pure Lakes skincare in all of our Beauty Therapy courses. The natural and organic, cruelty-free skincare range was recently awarded Best Environmental Project at the Cumbria Life Awards 2024.

We are proud to support a sustainable family based business, founded in 2006, located close by in the Lake District

## Thea Jones

Thea knew she wanted to be a make-up artist from a very young age and when she was 13, she attended a film charity in Barrow called Signal Film and Media, where, she created short films and earned qualifications in film making providing her with a taste of the film industry.

*After high school, I decided to go to LMC to study Hairdressing as I knew I needed these skills for my chosen path. I then progressed to the Media Makeup Level 3 course, my tutor Tracie helped me so much at the beginning of my journey.*

With the skills and knowledge she gained at College, Thea secured a job working on an ITV drama, and further developed her skills with The Iver Makeup Academy, an industry specific makeup school inside the famous Pinewood studios.

*I was accepted onto Screenskills High End TV Trainee Finder, a scheme that is set up to help people from different backgrounds get a start in the industry.*

Her first job back in the industry after Covid was on the hit Netflix series 'Heartstopper', which led to Thea being offered many other TV make up jobs including the final series of 'The Crown', where she was able to learn about the art of period styling.

*It's an extremely competitive and fast paced environment, but worth it!*



**Course: Hairdressing Level 2, Theatrical & Media Make-up Level 3**

**Profession: Hair and Makeup Junior**



## Janina Kidd

Janina teaches all levels of Beauty Therapy at LMC, inside our industry standard facilities. She provides the students with all the skills, knowledge and techniques they'll need to establish their careers in the industry.

*My favourite part of the role is teaching, seeing the learners progress through the units to gain their qualifications and making it to each stage with confidence. Then eventually seeing them go off and start their careers in Beauty, some even owning their own businesses.*





Proud to work with



# Business

As a Business student at Lancaster & Morecambe College, you'll learn the knowledge, skills and behaviours needed to progress into skilled employment or higher-level technical training or study in the business sector. Understand business context, learn project work and change management, discuss business behaviours and follow quality and compliance policies.

*Your future career could be*

Marketing Executive • Accountant  
Social Media Manager • Marketing Manager  
Banking Customer Service Advisor  
Business Developer & more



30%-40% of Lancashire businesses

now offer **flexible or remote working options** in roles like Administration, Project Management & HR



Scan here for courses





“ LMC offer a great alternative to A Levels for progressing to Higher Education ”

Business student, 2024

# T Level & Apprenticeship Courses



See page 20 for entry requirements

## T-LEVELS

### T Level Management & Administration

Level 3 • 2 years

This qualification allows you to gain an understanding of what is needed to work within an administrative or managerial role. T Levels are designed to deliver a high-quality level of knowledge about the sector, as well as the occupational skills required to enter the industry. Topics covered include Business Context, People, Quality Compliance, Project and Change Management. To gain a practical understanding of business, you will complete 315 hours of industrial placement throughout the course. The T Level prepares you for the world of work as well as providing significant preparation for study at Higher Education in a range of relevant disciplines, as the T Level is equivalent to 3 A Levels.



### Financial Education Launched at LMC

UK-wide bank, Tandem, asked LMC to be an initial launch partner institution, so they can deliver a bespoke programme developed to address the financial needs of young adults, brought directly to them via the touring bus.

### Business Support Apprenticeship

Level 3 • 18 months

You can choose from seven different options when applying for this qualification:

- Business Support
- Business Support with Marketing
- Business Support with HR
- Business Support with Management
- Business Support with Sustainability

The Business Support Level 3 Apprenticeship typically lasts 18 months, with 80% of the time spent focusing on your job role and the remaining 20% dedicated to off-the-job training. During this time, you will focus on developing the skills, knowledge and behaviours of a Business Support Assistant, working both independently and as part of a team within an organisation. Your duties will include developing, implementing and improving business services.

In addition to these hands-on experiences, all Business Support apprentices will delve into core business topics that are crucial for success in any industry. You will also have the opportunity to choose a particular pathway that best aligns with your personal interests and goals. This pathway will provide you with the opportunity to gain valuable experience in your chosen business field, as well as develop bespoke knowledge, skills and behaviours that will set you apart from other candidates in the job market.



### Caitlain Woods

**Course: Business Administration Level 3 Apprenticeship**

**Profession: Administrative Assistant**

Caitlain was an Apprentice at Lancaster University within the Organisational Development team. As part of the Apprenticeship, you are required to carry out a significant project, and she recalls,

*I really enjoyed the project aspect of my Apprenticeship, as I got to work on different areas of the business. As a result I learnt more and worked with new colleagues.*

An Apprenticeship is a great way to enhance your knowledge, skills and behaviours as you complete a qualification along side working. It gives you the opportunity to gain hands-on experience in various areas of any business.

*The Apprenticeship helped me to develop my communication and project management skills, which I have implemented into my role.*

Caitlain's hard work was recognised at the 2024 Lancashire Apprenticeship Awards where she was honoured as the overall winner in the Advanced Apprenticeship category.

*This was a huge accomplishment and provided me with recognition for the work I completed during the Apprenticeship.*

## Apprenticeships

### Customer Service Practitioner Apprenticeship

Level 2 • 15 months

This Apprenticeship develops excellent customer service skills and behaviours, as well as product and service knowledge when delivering to your customers. You will provide service in line with the organisation's standards and strategy, within appropriate regulatory requirements. Your customer interactions may cover a wide range of situations and can include; face-to-face, telephone, post, email, text and social media.



### Accounts Assistant Apprenticeship

Level 2 • 15 months

This Apprenticeship will focus on developing your skills in maintaining an efficient and accurate finance function within a business. The Accounts or Finance Assistant is responsible for assisting the team of accountants with junior accounting duties. *Assistant*

### Accountant Apprenticeship

Level 3 • 18 months

This Apprenticeship provides support within a finance function of an organisation. Part of your role will involve assisting in financial activities, such as data entry to month-end management accounts and year-end financial statements. In addition, you may be involved in regulatory financial requirements such as the completion of VAT returns or assisting in the preparation of tax computations.

#### Additional entry requirements:

- A Level 2 qualification in Accountancy or relevant industry experience, to be discussed at interview stage.



### Team Leader Apprenticeship

Level 3 • 18 months

This Apprenticeship is accredited by the Chartered Management Institute (CMI). There are various areas of study explored in a challenging, informative, and fun way, including business planning, strategy, building high performance teams, communication in the workplace and organisational psychology.

### Operations/ Departmental Manager Higher Apprenticeship

Level 5 • 21 months

This Apprenticeship is accredited by the Chartered Management Institute (CMI). The areas of study are theoretical and build on the skills, knowledge and behaviours needed to effectively lead and manage in the current business climate. Areas of study include operational planning and management, leadership and management theories, managing high performance teams, with an emphasis on application to your role and organisation.





Proud to work with



# Child Education

Whilst studying Child Education at LMC, you'll work with a team of specialist tutors who provide excellent teaching in the knowledge and practical skills needed to work in this challenging, but rewarding, vocational area. The courses include a large proportion of work experience in a variety of placement settings where you'll be able to apply theory to your practice.

*Your future career could be*

- Teaching Assistant • Nanny
- Nursery Worker • Early Years Teacher
- Primary School Teacher • Nursery Manager
- Early Years Practitioner & more



56,000 people are currently in **Education employment**, the fourth highest industry in **Lancashire** for jobs



Scan here for courses



“ Thank you to all the staff who have made my son's experience at College a positive one. All your hard work and dedication to your students is appreciated

Parent of Child Education student, 2023 ”

## Full Time, T Level & Apprenticeship Courses



See page 20 for entry requirements

### Caring Professions Pathway

#### Level 1 • 1 Year

This course has been designed to support those who want to gain basic knowledge of Childcare and who may not have entry requirements for mainstream courses.

### Caring for Children Under 5

#### Level 1 • 1 Year

This course will develop your knowledge of young children and help you to develop a range of skills in the Early Years sector. It will also help to prepare you for Level 2 study.

### Diploma for the Early Years Practitioner

#### (Early Years Practitioner)

#### Level 2 • 1 Year

This course provides you with the knowledge and understanding of babies and young children from birth to seven years of age, with applied knowledge in the early years. Upon successful completion of this qualification, you can enter the workforce as a Level 2 Early Years Practitioner, in a variety of roles such as nursery practitioner, classroom assistant or pre-school practitioner, or go onto Level 3 study.

Alternatively, there are also opportunities to progress into Level 2 positions in nurseries, pre-schools and reception classes, as you will be a Level 2 licenced Early Years Practitioner.

## T-LEVELS

### T Level Education & Early Year

#### Level 3 • 2 years

The core element of a T Level in Education & Early Years offers you the opportunity to develop knowledge and understanding of the sector and the holistic needs of children and young people. The Early Years Education specialism builds up the skills needed for future jobs. There is a 750-hour minimum industrial placement as a mandatory part of this course. On the course, you will demonstrate higher-level study skills, as well as the values and behaviours required for occupational roles in Education & Early Years. The T Level prepares you for the world of work, as well as providing significant preparation for study at Higher Education in a range of relevant disciplines.

On completion of this course, you will hold a Level 3 licence to practice as an Early Years Practitioner. This T Level is the equivalent to 3 A Levels and holds the appropriate UCAS points dependent on your final grade.

## News

Three of our T Level Education & Early Years students took part in an enrichment day at St Joseph's Primary School, Lancaster. Using their skills, knowledge and behaviours from their classes, they were able to encourage the children to take part in physical activities planned, managed and carried out by themselves with evaluation from feedback afterwards.



Our achievement rates for T Levels are above the national average

# 100%

of T Level students passed the 1st year

# 33%

of T Level students achieved a grade A  
(national average 8%)

# 92%

of T Level students achieved a grade C  
(national average 77%)



## Tamsin Glover-Emerson

Teaches: Education and Early Years  
At LMC since 2021

Tamsin specialises in Early Years Practice, Enabling Environments and Pedagogical approaches for the under 2s. She joined LMC in 2021 after working in the industry for over 15 years in various roles including Early Years Practice, family support and leadership and management.

When asked what her favourite part of working at LMC is, she said,

*Seeing the progression of my students from inexperienced students to confident, independent and professionally skilled young adults is the biggest reward for me - it's a privilege to be part of their journey.*

# Apprenticeships

## Early Years Practitioner Apprenticeship

Level 2 • 16 months

The aim of this Apprenticeship is to provide you with the knowledge and understanding of babies and young children from birth to seven years of age with applied knowledge in the early years (0–5 years).

### Additional entry requirements:

- Complete a satisfactory DBS check

## Early Years Educator Advanced Apprenticeship

Level 3 • 18 months

An Early Years Educator initiates activities based on individual children's needs, and supports children to develop in various areas of education. This Apprenticeship is a perfect choice if you want to continue your studies and develop your skills, knowledge and behaviours within the childcare sector, making children feel safe and shaping learning behaviours, whilst also earning a salary in full-time employment; kickstarting your long-term career path.

### Additional entry requirements:

- Complete a satisfactory DBS check and;
- Relevant industry experience

## Teaching Assistant Apprenticeship

Level 3 • 18 months

This Apprenticeship is a perfect choice if you want to continue your studies and develop your skills, knowledge and behaviours in a teaching role, whilst also earning a salary in full-time employment. Teaching Assistants work in primary, special and secondary education across all age ranges encompassing special educational needs and emotional vulnerabilities.

You will gain a Paediatric First Aid certificate whilst studying this Apprenticeship.

### Additional entry requirements:

- Complete a satisfactory DBS check; and
- Relevant industry experience





Proud to work with



ARRIBADA initiative

AOC

HYPERX

# Creative Digital Media

Creative Digital Media offers huge and varied career opportunities including animation, web-design, games production, 3-D visualisation and roles within the film and TV industry. At LMC, we offer courses from Level 1 up to Level 5 HND, and you'll work in an industry standard digital environment with a range of software and hardware to produce creative solutions to media assignments.

*your future career could be*

Web Designer • Video Editor  
Computer Games Development  
TV/Film Production Assistant • Animator  
Games Tester • Videographer & more



Film, TV, Games, Software and IT contribute more than 70 billion pound to the UK economy each year



Scan here for courses





“ Wendy and the Creative Digital Media Team made my son feel so welcome and at ease, and provided all the encouragement he needed to succeed

Parent of Creative Digital Media student, 2024 ”

## Full Time Courses



See page 20 for entry requirements

### I-Media

#### Level 2 • 1 Year

This course is designed to challenge your abilities across the full media scope including graphic design, photography, animation, music, film, video production, games design and professional editing skills.

### Esports

#### Level 3 • 2 years

This future-forward course, developed in partnership with the British Esports Association, is designed to help you turn a passion for gaming into successful and skilled careers in the rapidly growing industry.

As part of the main programme, you will be responsible for creating your own brand, designing a logo and launching your own channel. You will also be expected to develop a real life Esports event from initial creation, through to managing and hosting the event.

#### Additional entry requirements:

To study a Creative Digital Media course, you will need:

- To create a short piece of work for interview; and
- Enthusiasm for the subject with a commitment to study, and show good skills in practical subjects.

### Creative Digital Media

#### Level 3 • 2 years

Creative Digital Media has a strong emphasis on giving you a broad range of skills across a number of disciplines in digital media, games development, sound design and film and television. Each brief on this course gives you a broad introduction, with opportunity to develop skills in specific technical areas.

### Creative Digital Media HNC

#### Level 4 • 1 Year

This HNC course will develop your practical project management skills in preparation for a career in the creative media industry, or progression to further study. You will use professional standard equipment and software to produce a range of media projects, such as promotional videos, documentaries, web content, computer games and other media-rich applications in a challenging and productive environment.

### Creative Digital Media HND

#### Level 5 • 1 year

The Creative Digital Media HND further develops your practical project management skills in preparation for a career in the creative media industry. You will use professional standard equipment and software to produce a substantial portfolio of media projects with emphasis on student conceptualisation, design and execution from the ground up through to completion.



## New York Trip

Our Creative Digital Media students visited New York this year and enjoyed exploring the big city and taking part in activities.

They got hands on with high-tech equipment in a VR workshop at The Museum of Moving Images, did games testing in the interactive media department at NYU and caught up with their sketch books during an interval at a jazz gig.

They also got the chance to sample a traditional NY breakfast and squeezed in a visit to Roosevelt Island, Times Square, 'Chicago', the New York Stock Exchange and more!

## Esports Winners

Esports\_LMC are the British Esports Student Champs Overwatch Division 2 WINNERS!

Huge congratulations to the team, Ryan Hughes, Olivia Wills, Will Cook, Connor Lingard, Lewis Ideson and Oliver Wood, for all their hard work throughout the 2023/24 season - it's been amazing!







# Digital Technology

Digital Technology is in every part of every day. You can't do much without the application of digital technology and the demand for skilled IT graduates is growing. On an Information Communications Technician Apprenticeship, you'll develop skills that are transferable into existing and emerging job roles.

*Your future career could be*

Assistive Technology Developer  
Data Analyst • Network Engineer  
Cloud Infrastructure Engineer • IT Manager  
Web Developer & more



2000 extra jobs  
will be created in  
**Lancashire's National  
Cyber Force**  
by 2030



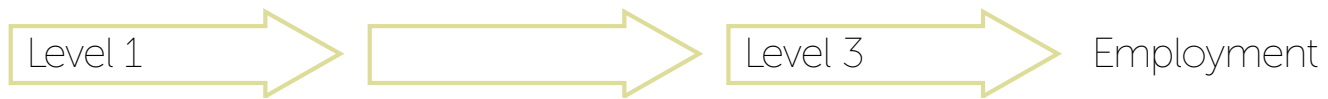
Scan here for  
courses



“ I have enjoyed learning new skills and experiencing new things. I feel I am more competent in my skills than I was before I joined this course

Digital Technology student, 2023 ”

# Full Time & Apprenticeship Courses



See page 20 for entry requirements

## Digital Technology Pathway

### Level 1 • 1 year

All Pathway courses at LMC provide you with a positive foundation into studying at College.

This Digital Technology Pathway is designed for students who have an interest in developing skills and knowledge related to computing, IT and digital technology.



**Charlie Helme**

**Course:** ICT Apprenticeship

**Profession:** Employer Engagement Advisor at LMC

Charlie always had a passion for ICT and originally planned to start an IT Apprenticeship when he was 17 years old but opted for full time employment instead.

After working at LMC for 3 years in the employer engagement team, he was delighted to see the ICT Apprenticeship had returned and took his opportunity to pursue his dream and start the course.

*LMC has been nothing but supportive in letting me be flexible with my current role and completing the Apprenticeship alongside it, special thanks to Kelly, Ian, Jonny and Vic who made it happen.*

## Information

### Communications Technician Apprenticeship

#### Level 3 • 18 months

An Information Communications Technician provides support to internal and/or external customers, by using tools or systems to problem solve and troubleshoot routine and non-routine problems. This occupation supports clients/customers with their systems. They achieve this through monitoring and maintaining the systems and/or platforms to maximise productivity and user experience.

During the Apprenticeship you will be required to undertake 20% off the job training (OTJT), which includes a mixture of tutor led training, self-study and peer learning. There will be opportunities for you to engage with other apprentices and learners at the College to enhance your learning experience. You will be encouraged to participate in wellbeing and mental health activities.



**Ian Jones**

Working in IT Management and Network Security for both industry and education has given Ian valuable knowledge within the IT sector. Over the past 20 years, he has trained and mentored many IT Technicians and apprentices and also teaches our part time Cyber Security Level 1 and Level 2 courses.

More information: [lmc.ac.uk/part-time](http://lmc.ac.uk/part-time)

## Cyber Security?

In today's technology, both individuals and organisations can be affected by the pressure that cybercrime asserts on modern day living. Whether this be the fear of a Ransomware attack, or the hurt caused by cyberbullying, the implications to people and businesses can be far reaching.

Whether you are wanting to learn how to protect yourself and others at home, or wanting to take the first steps to protecting a business, we offer short part time courses in Cyber Security which could help you on your way to be more cyber aware.

More information: [lmc.ac.uk/part-time](http://lmc.ac.uk/part-time)







Proud to work with



# Energy, Engineering & Construction

We pride ourselves at LMC on being one of the best providers of Energy, Engineering & Construction training in the North West. You'll be studying in our industry standard workshops with first class facilities, alongside lecturers with years of experience in the field. You'll be learning from the best in the business.

*Your future career could be*

Bricklayer • Plumber • Joiner  
Electrician • Welder • Rail Engineer  
Offshore Project Engineer • Plasterer  
Junior Project Manager • Surveyor & more




We work with  
**over 75 local and regional employers**  
across all areas of energy,  
engineering  
& construction



Scan here for  
courses





“ I've met new people who share the same passions in Engineering as me and people who have similar ambitions to me on the course at LMC ”

Engineering student, 2024

# Full Time, T Level & Apprenticeship Courses



See page 20 for entry requirements

## Engineering

### Level 1 • 1 year

This course is designed to develop the basic engineering skills, knowledge and behaviours that will prepare you for a career in Engineering. You will learn about hand fitting skills, engineering practices and principles, welding and hand and power tools.

## Engineering

### Level 2 • 1 year

This course covers the knowledge required for a career in Engineering and power industries. It is aimed at preparing you to enter the sector by grounding you in working safely and effectively, plus interpreting and using engineering information with an introduction to Computer Aided Design (CAD).

#### Additional entry requirements

- Relevant industry experience OR
- A Level 1 qualification in a related subject

# T-LEVELS

## T Level Design & Development for Engineering & Manufacturing

### Level 3 • 2 years

On this T Level you will develop the core knowledge and skills that are needed for entry into a range of design and development occupations within engineering and manufacturing. In addition to the core content. You will complete an occupation-specialism in either electrical and electronic engineering.

#### Additional entry requirements

- GCSE Maths at grade 5 or higher
- GCSE English at grade 4 or higher

## T Level Maintenance, Installation and Repair for Engineering and Manufacturing

### Level 3 • 2 years

On this T Level you will develop the core knowledge and skills that are needed for entry into a range of maintenance, installation and repair occupations within the Engineering sector. In addition to the core content you will complete an occupational specialism in Mechanical Maintenance Technologies.

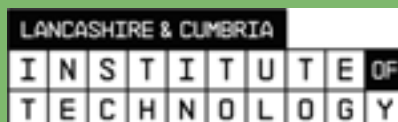
#### Additional entry requirements

- GCSE Maths at grade 5 or higher
- GCSE English at grade 4 or higher

## High-tech software access

Our Engineering students have access to state of the art workshops as well as high-tech CAD suite software to elevate their skillset for the world of work.

LMC have also joined with partner colleges from across the region to offer a range of higher-level technical courses, as part of the Lancashire and Cumbria Institute of Technology (IoT). The IoT will drive economic growth whilst providing learners with the knowledge and skills required across a range of STEM occupations and industries.



## Steven Loxam

**Teaches: Fabrication & Welding, Engineering HNC Level 4 At LMC since 2020**

Steven has always had a passion for teaching, and joining the team at LMC was a natural fit for him. We offer vocational education which is designed to give students a more focused introduction to the engineering skills and knowledge required to prepare them for a career in the industry, as Steve explains,

*Previously at school, some young people may have struggled with academic subjects, but seeing them pick up a vocational subject and find that they're genuinely good at it is pretty cool!*

# Apprenticeships

## Maintenance and Operations Engineering Technician Apprenticeship

Level 3 • 36 months

This Apprenticeship will provide you with all the skills required to start or further your career within the Engineering industry. You will learn to maintain the safety, integrity and effective operation of plant and equipment in industries that are part of the national infrastructure engineering sector. You will also develop the underpinning knowledge, including health and safety, you need for working in any engineering environment.

### Additional entry requirements:

- 5 GCSEs at grade 4 or higher including Maths & English or Functional Skills Level 2, or the ability to demonstrate skill to this level through initial assessments.



## Engineering HNC

Level 4 • 1 year

The Extended Certificate in Engineering (Nuclear) delivered at LMC in collaboration with the National College for Nuclear (NCfN) offers you the potential to open doors to many fantastic and exciting opportunities. There is a wide variety of exciting roles within the sector, such as Radiation Protection Technician, Project Control Engineer and Aerospace Engineer.

### Additional entry requirements:

- A recognised Level 3 extended certificate, extended diploma or A Levels relevant to Engineering
- GCSE English at grade 4 or higher.



# Full Time, T Level & Apprenticeship Courses



See page 20 for entry requirements

## Fabrication & Welding

### Level 1 • 1 year

Fabrication & Welding Level 1 is designed to give you the basic engineering skills and knowledge to prepare you for a career in the Welding industry. You will develop safe working practices and competency in fabrication and welding in order to progress onto further studies or employment.

## Fabrication & Welding

### Level 2 • 1 year

Fabrication & Welding Level 2 is designed to give you a more focused introduction to the engineering skills and knowledge required to prepare you for a career in the Fabrication & Welding industry. You'll learn about producing fabrication components and assemblies, joining materials using MMA, MIG and TIG processes, and related engineering knowledge.

#### Additional entry requirements:

- Relevant industry experience OR
- A Level 1 qualification in a related subject

## General Welding Apprenticeship

### Level 2 • 18 months

This Apprenticeship will provide you with all the skills required to start a career in the General Welding industry. You will learn the principles of general welding, such as butt, fillet, lap and corner joints in the flat, horizontal and vertical positions, as well as underpinning knowledge, including health and safety, you need for working in any engineering environment.

#### Additional entry requirements:

- 4 GCSEs at grade 3 or higher including Maths & English or Functional Skills Level 1, or the ability to demonstrate skill to this level through initial assessments

## Plate Welding Apprenticeship

### Level 3 • 36 months

This Apprenticeship will provide you with the skills required to further your career in the Welding industry. You will learn advanced health and safety as well as fundamental welding principles such as butt, fillet, lap and corner joints in the vertical and overhead positions that will undergo both destructive and non-destructive testing to international standards.

#### Additional entry requirements:

- 5 GCSEs at grade 4 or higher including Maths & English or Functional Skills Level 2, or the ability to demonstrate skill to this level through initial assessments



## Chris Huntington

Teaches: Fabrication & Welding

At LMC since 2015

Before joining the team, Chris worked for various companies, honing his fabrication and welding skills. Working in both workshops and on site, he is now able to share everything he learned with our students.

*My favourite part about my job is being able to help and train students of all ages, supplying them with the skills they need to go on and gain employment within the trade.*

## News

The Man With The Hat, a Heysham-based grounds care and landscaping company, was struggling to repair its machinery as it aged with general wear and tear and called upon LMC to help.

Two students from Fabrication & Welding Level 1 used their knowledge from the course to use 2D CAD drawings and plasma cutting to repair the machinery back to full working order.



# Apprenticeships

## Construction Skills

### Level 1 • 1 year

This course is for those who are interested in the industry and want to develop their skills within the trades, with a view to progressing onto a specific course in the construction industry, such as Bricklaying, Carpentry & Joinery or Plastering.

## General Builder

### Level 1 • 1 year

This course is a good introduction to Bricklaying and General Building for anyone wanting to work in the construction industry. Starting with little or no experience, this course will build your practical skills and prepare you with the theory and knowledge ready to progress to Level 2.

## General Builder

### Level 2 • 1 year

This course is suitable for those progressing from Level 1 or have experience, who wish to work in construction with a specific interest in bricklaying. Completion of this course could lead to an Apprenticeship in the industry, further study on a Level 3 related course or employment.

## Bricklaying Apprenticeship

### Level 2 • 24 months

The perfect choice if you want to continue your studies and develop your skills, knowledge and behaviours in Bricklaying, whilst also earning a salary in full-time employment.

#### Additional entry requirements:

- 4 GCSEs at grade 3 or higher including Maths & English or Functional Skills Level 1, or the ability to demonstrate skill to this level through initial assessments

## Property Maintenance Operative Apprenticeship

### Level 2 • 24 months

The Apprenticeship will provide you with all the skills you require to start a career within the Property Maintenance industry. As a Property Maintenance Operative, you will need to keep a range of properties in a good state of repair. Property Maintenance Operatives conduct routine maintenance tasks, and minor planned and responsive repair works, using a broad range of fundamental trade skills including carpentry, joinery, plumbing, plastering, brick and block work, external works and associated finishing trades including tiling, painting, and decorating.

#### Additional entry requirements:

- 4 GCSEs at grade 3 or higher including Maths & English or Functional Skills Level 1, or the ability to demonstrate skill to this level through initial assessments

## Construction Skills Pathways Programme

Leading home-builder, Northstone, has launched its programme – a unique partnership with LMC designed to inspire and develop the next generation of construction workers.



# Full Time, T Level & Apprenticeship Courses



See page 20 for entry requirements

## Plastering

### Level 1 • 1 year

This course is a great way to start your career and develop the basic skills required to progress in the Plastering trade, such as applying wet finishes to walls, ceilings and dry lining. This is a great progression route onto the Level 2 course in Plastering.

## Plastering

### Level 2 • 1 year

This course is suitable for those progressing from Level 1 or have experience, who wish to enhance their skills in plastering. You will be based in our industry standard workshops where you'll develop the necessary skills to become a plasterer, including both practical and theory work. Completion of this course could lead to an Apprenticeship in the industry, further study on a Level 3 related course or employment.

## Electrical Installation

### Level 1 • 1 year

This course gives you a good introduction to both theoretical and practical aspects of Electrical Installation and can lead to an Electrical Apprenticeship or progression onto the Full Time Level 2 Electrical Installation course.

## Electrical Installation

### Level 2 • 1 year

Electricians have exciting opportunities of work varying from domestic settings to industrial environments and so you are required to actively solve problems on this course; ideal for someone who wants to pursue a hands-on career.

#### Additional entry requirements:

- GCSE Maths at grade 4 or higher

## Fire Emergency and Security Systems Technician Apprenticeship

### Level 3 • 36 months

An Apprenticeship is a perfect choice if you want to continue your studies and develop your skills, knowledge and behaviours in a specific industry, whilst also earning a salary in full-time employment; kickstarting your long-term career path.

This Apprenticeship will provide you with the skills you require to start a career within the fire and security industry. You will have the opportunity to learn the underpinning knowledge of design, installation, commission and maintenance of electronic systems in and outside simple and complex premises to protect individuals, homes and properties from risk and danger.

#### Additional entry requirements:

- 5 GCSEs at grade 4 or higher including Maths & English or Functional Skills Level 2, or the ability to demonstrate skill to this level through initial assessments

## Innovative Bowkers Electrical Centre

The College worked with the prestigious firm to design and co-construct the Chris Bowker Electrical Centre, which was developed to expand on the electrical courses LMC provides to industry professionals, apprentices and students.



## Vehicle Fitting Operations

### Level 2 • 1 year

Vehicle Fitting Operations Level 2 is designed to cover the theoretical and practical aspect of garage operations, including light vehicle tyres, exhaust systems, batteries and brakes. The course is both classroom and workshop based with practical and on-line assessments. You will also gain a broad knowledge of health and safety in the workplace, along with other skills associated with working in a garage.

*This qualification is facilitated by Lancaster Training Services (LTS).*

## Duane Dibb

### Teaches: Plastering • At LMC since 2018

*Be prepared to work hard and be challenged. The more you put in, the more you will get out of the course. It's a rewarding experience as you can clearly see your skills develop, so why not give it a go?*



# Apprenticeships

## Carpentry & Joinery Apprenticeship

Level 2 • 24 months

This Apprenticeship gives you the scope to develop a broader understanding of how companies operate and how work is prepared within the Joinery field. Practical assignments set in real-life workplace scenarios will help you learn, build skills, and develop behaviours which you'll use in your future career.

### Additional entry requirements:

- 4 GCSEs at grade 3 or higher including Maths & English or Functional Skills Level 1, or the ability to demonstrate skill to this level through initial assessments

## Craft Joinery Apprenticeship

Level 3 • 15 months

This course is suitable for those progressing from the Level 2 Apprenticeship and gives you the scope to develop a broader skill set. The course can provide a platform to progress into management, university and even self employment. The tasks in this course are bespoke and will enable you to fine tune your practical ability and theory knowledge in the trade.

### Additional entry requirements:

- 5 GCSEs at grade 4 or higher including Maths & English or Functional Skills Level 2, or the ability to demonstrate skill to this level through initial assessments

## Carpentry & Joinery

Level 1 • 1 year

This course is for those who wish to develop their basic Carpentry & Joinery skills with a view to progression within the construction industry. You will learn safe working practices, communication, how to prepare and maintain power tools, and basic construction technology.

## Carpentry & Joinery

Level 2 • 1 year

This course is suitable for adults, and those progressing from Level 1, who wish to enhance their skills in Carpentry & Joinery. You will learn how to use power tools, fixing skirtings, architraves and hinged doors, as well as first and second fixing before plastering. Completion of this course could lead to progression onto an Apprenticeship.



## Work Experience and Supporting the Community

Some of our joinery students recently made their way over to Great Wood Primary School to help out with constructing some solid wooden fences around gardens and are also making some raised beds for plants.

It's great experience for our students to be working on-site and also helping out our local community.



# Full Time, T Level & Apprenticeship Courses



See page 20 for entry requirements

## Plumbing & Heating

### Level 1 • 1 year

This course is a great way to start your career in the Plumbing & Heating trade. You will develop basic skills in order to progress into further studies or employment, such as above ground drainage, fundamentals of pipework, safe working practices and more.

## Plumbing & Heating

### Level 2 • 1 year

This course is suitable for school leavers, adults, and those progressing from Level 1, who wish to progress in the Plumbing & Heating industry. You will develop the necessary skills to become a plumber, including both practical and theory work in copper, steel, sanitation, cold water, hot water cylinders, plastic pipe work, central heating, safety, and communication.

#### Additional entry requirements:

- GCSE Maths at grade 4 or higher

## Plumbing & Domestic Heating Technician Apprenticeship

### Level 3 • 48 months

You will receive regular monitoring and assessment, both in the workplace and at College, to ensure you're developing the required skills, knowledge, and behaviours to succeed in the Plumbing & Heating trade. On this Apprenticeship, you will learn the fundamentals in gas, water and central heating appliances, which can lead you to full time employment, self-employment or further studies in ACS gas, or oil pathways.

#### Additional entry requirements:

- 5 GCSEs at grade 4 or higher including Maths & English or Functional Skills Level 2, or the ability to demonstrate skill to this level through initial assessments

## Gas Engineer Apprenticeship

### Level 3 • 18 months

This Apprenticeship will provide you with the skills required to further your career in the gas industry. You will learn advanced health and safety, science and the principles required to work in the construction and engineering environment. You will be taught in industry standard workshops, ensuring you gain confidence and proficiency, whilst developing your skills and gas knowledge. On qualifying from this course, you will hold qualifications for ACS, Unvented Cylinders and Water Regulations.

#### Additional entry requirements:

- 5 GCSEs at grade 4 or higher including Maths & English or Functional Skills Level 2, or the ability to demonstrate skill to this level through initial assessments

## Sam Taylor

Course: Plumbing & Heating, Gas Courses

At LMC since 2023

Sam is able to share his experience with students from previously being an apprentice, providing them with valuable insights into the working world. His job involves helping students who are just starting off in their plumbing careers, developing their understanding of plumbing and heating concepts, moving onto gas work and helping students on their journey towards getting on the Gas Safe Register.



## Industry standard training

Our full time students and apprentices get the chance to work with industry standard equipment and gain further insight into various brands in the industry.







Proud to work with



# Foundation Education

Foundation Education aims to provide you with a positive start into full time study at College. Here at LMC, we believe that offering you the right support network and a variety of options will motivate and inspire you to achieve, giving you the confidence to progress onto Apprenticeships, supported employment or further study within College.

*Your could progress on to...*

Supported Internship  
Apprenticeships • Supported Employment  
Further Study at LMC & more



**Digital** is a priority sector for **Lancashire** and is predicted to increase by **36% by 2028**, equal to **£413million**



*Scan here for courses*



## Full Time Courses

Entry Level

See page 20 for entry requirements

### Bridge to Progression

#### Entry/Level 1 • 1 year

This full time course helps “bridge the gap” between school and College, and is suitable for young people who want to develop their employability skills and build confidence.

### Pathway Routes

#### Level 1/2 • 1 year

These courses provide you with a positive foundation into studying at College.

- Caring Professions Pathway
- Animal Studies Pathway
- Hospitality & Catering Pathway
- Sports & Public Services Pathway
- Digital Technology Pathway
- Hair & Beauty Pathway

“ Great knowledge and skills attained in a calm environment ”  
 Foundation Learning student, 2023



Proud to work with

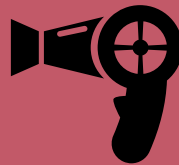


# Hairdressing

Whilst studying Hairdressing at LMC, you have access to our industry standard facility The Salon, alongside a team of highly experienced tutors. With access to real-life experience on live clients, you'll learn how to develop the skills and techniques needed for a career in the industry and gain confidence in your knowledge to develop your individual creative and artistic talent.

*Your future career could be*

Hairdresser • Barber • Stylist  
Salon Manager • Colourist  
Hair and Makeup Artist • Senior Stylist  
Laser Therapist & more



The **industry growth rate** increased by **35% in 2022** and is expected to continue to rise over the next 5 years



Scan here for courses



“ I have enjoyed every aspect of the Hairdressing course. I have learnt so much, and Tracie my tutor is excellent in her demonstrations

Hairdressing student, 2024 ”

## Full Time & Apprenticeship Courses



See page 20 for entry requirements

### Hair & Beauty Introduction

Level 1 • 1 year

This course offers an introduction to the exciting and prosperous careers available in Hairdressing & Beauty Therapy. You will gain knowledge and new skills in a variety of basic Hairdressing & Beauty Therapy services.

### Hairdressing

Level 2 • 1 year

This course focuses on the development of the underlying principles and practical skills required in the hairdressing industry. During this course, you will gain a variety of skills such as shampooing, conditioning, colouring, cutting, and styling hair. You will gain experience of working with multiple women's hairdressing techniques.

### Hairdressing

Level 3 • 1 year

This advanced Hairdressing course is ideal for those wishing to further develop their skills and knowledge in this vocation. The course is a mix of both theory and practical sessions looking at advanced cutting, styling, and colouring techniques. You will be expected to build a portfolio of evidence and practical assessments throughout the year, to show your practical competence in the application of hair services.

#### Additional entry requirements:

- Level 2 qualification in Hairdressing



### Hair Professional Apprenticeship

Level 2 • 24 months

The Hair Professional Level 2 Apprenticeship is a course that focuses on the development of the underlying principles and practical skills required in the Hairdressing industry. During your Apprenticeship, you will gain a variety of skills such as shampooing, conditioning, colouring, dressing, and styling hair. You will also learn cutting and perming techniques.

This is the perfect course for anyone who is hoping to enter the Hairdressing industry and would like to achieve this through a route where you can earn while you learn.

## Lauren Quayle

Following the Hairdressing Level 2 course, Lauren decided she wanted to progress to an Apprenticeship, and started her career as a Hair Stylist working in local salons.

She has come full circle in her industry and achieved her dream of opening her own salon The Locks Lounge in Morecambe, and has just taken on her own Hairdressing Apprentice.

*As I was a Hairdressing Apprentice at Lancaster & Morecambe College over 10 years ago, when I opened my own salon I really wanted to help a young person to learn the skills of the industry and pass on my knowledge.*

Lauren worked with the Employer Engagement team at College and says that the whole process of taking on an Apprentice was easy to manage with the help of the Employer Advisor staff, as they help to guide you through the whole process.

*Starting your own business is never easy, but I feel that I have come a long way since my time at College, and highly recommend opening your own salon, and hiring an Apprentice!*

*It's really easy to take on an Apprentice, the staff at College have been great and have helped me through the whole process.*



**Course: Hair & Beauty Introduction Level 1 Hair, Professional Level 2 Apprenticeship**

**Profession: Owner of The Locks Lounge Hairdressing Salon**



## Tracie Carrick

Tracie has worked at Lancaster & Morecambe College since 1998, and works with the full time students and Apprentices on the various full time Hairdressing courses and Apprenticeships on offer at College. She has worked in the hairdressing industry for many years before deciding to move into education and teaching. Tracie decided to become a tutor at LMC because she wanted to share her knowledge with others and inspire the next generation of hairdressers.

*It's incredibly rewarding for me to observe my students develop, because they enjoy learning how to make people feel good!*





Proud to work with



# Health & Social Care

Our health courses give you access to exciting programmes of study taught by qualified tutors with industry experience. You'll undertake extensive work experience in a variety of settings, where you can apply what you've learnt in the classroom to practical experiences. This sector is one of the largest employers in the local area, so there will always be work waiting for newly qualified individuals.

*Your future career could be*

Care Assistant • Radiographer  
Nurse • Midwife • Social Worker  
Clinical Support Worker  
Occupational Therapist & more



Health & Social Care is the **largest employment sector in Lancashire**, with **50,000+** jobs as the UK population ages



Scan here for courses





“ My daughter has loved her year at LMC. She is a quiet girl by nature and the tutors recognised that, but she has still excelled

Parent of Health & Social Care student, 2024 ”

## Full Time & T Level Courses



See page 20 for entry requirements

### Care Profession Pathway

#### Level 1 • 1 year

All Pathway courses at LMC provide you with a positive foundation into studying at the College.

This course has been designed to support students who want to gain a basic knowledge of Health & Social Care and who may not have the mainstream entry requirements for other courses.

### Health & Social Care

#### Level 2 • 1 year

This is an interesting and challenging full time course, which is designed for those wishing to gain employment in the Health & Social Care sector, or wishing to progress on to Health & Social Care Level 3. The course is a mixture of academic study and vocational experience.

This course enables you to gain a breadth of knowledge and experience of the many aspects of Health & Social Care.

#### Additional entry requirements:

To study Health & Social Care Level 2 and 3, you must:

- Have a caring and compassionate nature and have a passion for working with people;
- Be able to communicate confidently;
- Demonstrate effective teamwork in a real-work environment; and
- Complete a satisfactory DBS check.

### Health & Social Care

#### Level 3 • 2 years

This course supports students to gain an understanding of the careers available in Health & Social Care.

Providing excellent links to vocational practice, the course is taught by staff with industry experience. The core values of Health & Social Care are covered throughout the programme. Examples of subjects include; Human Lifespan Development, Principles of Safe Practice, Anatomy and Physiology, and Work Experience. You will be required to complete a Practical Evidence Portfolio to show technical skills developed on the programme.

Alongside three days in College, you will complete one day per week on placement, and will be assessed through coursework, examinations, and portfolios.

## T-LEVELS

### T Level Foundation Year Health

#### Level 2 • 1 year

This foundation programme is for those who have the ambition to succeed on a T Level programme but are not quite ready to start. The foundation year is designed to give you effective, tailored preparation specifically to help you progress onto a T Level. You will learn all about working in the health sector, and the role of the healthcare practitioner, as well as scientific principles and person centered health care. You will also attend an industry placement to prepare you for T Levels.

### T Level Health

#### Level 3 • 2 years

The core element provides a variety of knowledge and skills relevant to the health route as a whole. The Supporting the Adult Nursing Team occupational specialism ensures you develop the knowledge, behaviours and skills needed for future jobs. There is a 315-hour minimum industrial placement as a mandatory part of this course, which also prepares you for skilled employment. The T Level prepares you for the world of work, as well as providing significant preparation for study at Higher Education in a range of relevant disciplines.

## Great feedback

One of our Health T Level students completed a 3 week industry placement at University Hospitals of Morecambe Bay NHS Foundation Trust and received great feedback from the Histopathology Technical Services Manager.

*"It was a pleasure having her with us. Her enthusiasm was infectious, it was never a burden for anyone to spend time with her."*





## Health T Level success

Two of our Health T Level students have been nominated and shortlisted for awards at the Lancashire & South Cumbria NHS Health & Social Care Apprenticeship Awards.

Micah has been nominated by the team on his industry placement on the Radiology department at the Royal Lancaster Infirmary for the T Level Student of the Year Award because he had a fantastic 3 week industry placement.

Alliyah has been nominated by our Lecturer and T Level Health course manager, for her attitude and behaviour on placement whilst in the Pathology department at the RLI, her nomination is for the Rising Star T Level Student Award.





Proud to work with



# Hospitality & Catering

Studying at the Bay School of Hospitality provides you with access to a team of expert tutors with professional experience in some of the UK's premier hotels and restaurants. Leveraging their extensive knowledge, you will acquire the skills and techniques essential for a successful career as a chef or hospitality professional. You will gain hands-on experience in our state-of-the-art facilities and The Bay Restaurant, our training restaurant at @LMC.

*Your future career could be*

- Chef • Kitchen Manager
- Baker • Restaurant Manager
- Publican • Butcher • Barista • Maître D'
- Catering Manager & more



  
 84,000 skilled workers  
 are required to enter the  
 workforce in  
**Accommodation and  
 Food Services**  
 by 2028

  
 Scan here for  
 courses



“ Pastoral support from the catering tutors and SEN has been top notch  
Parent of Hospitality & Catering student, 2023 ”

## Full Time Courses



See page 20 for entry requirements

### Hospitality Pathway

#### Level 1/2 • 1 year

All Pathway courses at LMC provide you with a positive foundation into studying at the College.

This course has been designed to support students who want to gain a basic knowledge of Hospitality & service skills with a view to progressing onto our Level 1 course in the future.

### Catering Pathway

#### Level 1/2 • 1 year

All Pathway courses at LMC provide you with a positive foundation into studying at the College.

This course has been designed to support students who want to gain a basic knowledge of the Catering industry with a view to progressing onto our Level 1 course in the future.

### Professional Food and Beverage Service

#### Level 1 • 1 year

This qualification is tailored for individuals aspiring to build a career in hospitality. It provides comprehensive coverage of food and beverage service, equipping you with the essential skills and a deep understanding of the role and expectations set by future employers. Key competencies explored throughout the course include customer service, event planning, bar and barista skills, payment handling, stock rotation, and staff management. Moreover, you will explore relevant health and safety awareness for catering and hospitality, legislation in food and beverage service, understanding menus and dealing with bookings.



Alessandro Possamai

Course: Hospitality & Catering

At LMC since 2021

Alessandro joined LMC after teaching at a college in Manchester, following extensive industry-experience including running his own catering business.

*Working at LMC, I like how every day is different because we attract such a wide range of students from the local area. It's nice to see people from all different backgrounds and cultures sharing a passion for cooking.*

Alex currently teaches a range of topics as he focusses on the foundations of cookery and culinary skills with his full time learners and refining the pastry skills with his adult learner groups.

*This industry demands dedication, hard work and a willingness to work long hours but the rewards can be so fantastic! Every day is different and the industry opens so many doors across the world.*

## Partner Hotels & Restaurants

Additionally, all courses are supported by local and regional employers, offering learners valuable work placement opportunities to enhance their practical experience.

By collaborating closely with our partner hotels in the local area and the Lake District, including The Gilpin, The Inn Collection, English Lakes Hotels, and others, we take pride in offering our learners the most current and relevant industry experience.



  
THE INN COLLECTION  
GROUP

English Lakes  
Hotels Resorts & Venues

  
★★★★★

## Introduction to Professional Cookery

### Level 1 • 1 year

This course is designed to give you a broad range of culinary and food services skills and knowledge that form the foundations into the Catering industry. The practical classes will include food preparation and service, with the theory lessons covering the essential underpinning knowledge required to complete your assignment work.

## Professional Cookery

### Level 2 • 1 year

This course is designed to build on a broad range of cookery skills and food services, to prepare you for a career in the Hospitality industry. The practical classes will include food preparation and service, building on the skills from the Level 1 course. The theory lessons will cover the essential underpinning knowledge required to complete your assignment work.

## Professional Cookery

### Level 3 • 1 year

This course is tailored for individuals currently employed at a supervisory level in the industry who have already achieved a Level 2 qualification in culinary skills. The program will delve into advanced dishes and techniques, providing the expertise needed to excel in establishments of higher standards, including those recognised with AA rosettes and Michelin stars.



## LMC Allotments

Our students grow seasonal produce throughout the year and harvest the crops for use in our kitchens and restaurant.

## Overseas travel

This year, a group of our Hospitality & Catering students spent two weeks in Pescara on the East Coast of Italy. During their time abroad, they got to learn about traditional regional recipes and preparing meals. They also visited Rome, Sulmona, Chieti, a winery and a farm that produces both traditional cheeses and meats.





## Apprenticeship Courses



See page 20 for entry requirements

### Production Chef Apprenticeship

**Level 2 • 15 months**

This Apprenticeship is designed for individuals currently employed or seeking employment as Production Chefs who aim to achieve professional chef qualifications. As an apprentice, you will contribute to a dynamic and fast-paced culinary team, while attending College one day per week. This structured program will enable you to enhance your skills and deepen your knowledge, thereby supporting your practical work in the industry.

### Senior Production Chef Apprenticeship

**Level 3 • 18 months**

A Senior Production Chef may oversee a brigade team or assist the Head Chef in larger establishments. They are also responsible for supervising production chef teams across various kitchen environments. On this Apprenticeship, you will be tasked with managing the day-to-day operations of kitchen service, encompassing all areas of production and supply in a dynamic and fast paced environment.

#### Additional entry requirements:

- Level 2 qualification in a relevant subject area.

### Hospitality Team Member Apprenticeship

**Level 2 • 15 months**

As a Hospitality Team Member Apprentice, your role will be very varied and you will have to be adaptable and ready to support team members across the business, for example during busy periods. Specialist areas in hospitality include food and beverage service and food production.

### Team Leader Apprenticeship

**Level 3 • 18 months**

This Apprenticeship is accredited by the Chartered Management Institute (CMI). There are various areas of study explored in a challenging, informative, and fun way, including business planning, strategy, building high performance teams, communication in the workplace and organisational psychology.



**Adrian Law**

**Course: Hospitality & Catering**

**At LMC since 2007**

After a busy career working in the Hospitality & Catering industry, Adrian decided that he wanted to transition into teaching. He knew the Hospitality & Catering department here at Lancaster & Morecambe College was a centre of excellence, and wanted to be a part of it.

*The best part of my job is taking students with little to no knowledge of the industry and inspiring them to be someone who can gain employment and be successful in their chosen field.*

Adrian understands the path students will take after leaving College as he experienced it himself. Using this experience, he can help our students as they progress into their own careers.

Adrian also takes care of our on-site allotments and bee apiary, harvesting their honey to use in our kitchens and restaurant throughout the year.







Proud to work with



# Sport

On a Sports programme at LMC, you'll have access to a fantastic range of activities and facilities, including our high specification all-weather 3G pitch, multi-use games area, the Fitness Suite and Sports Laboratory. Our courses are delivered by highly qualified industry specialist tutors who work across all key areas of professional sport and its supporting infrastructure. We develop professional sports teams onsite, including Morecambe FC.

*Your future career could be*

- Fitness Instructor • Football Coach
- Outdoor Activities Instructor • Lifeguard
- Sports Therapist • Sports Coach
- Sports Centre Manager & more



The **sports industry** in **Lancashire** supports **over 15,000 jobs** with increasing roles in fitness coaching and personal training



*Scan here for courses*



“ My son has been very happy on his Sports course at  
Lancaster & Morecambe College

Parent of Sports student, 2023 ”

## Full Time Courses



See page 20 for entry requirements

### Sport & Public Services Pathway

#### Level 1 • 1 year

All Pathway courses at LMC provide you with a positive foundation into studying at College.

This course has been designed to support students who want to gain a basic knowledge in Sport and who may not have the mainstream entry requirements for other courses.

### Sport

#### Level 2 • 1 year

This course is geared towards a career in the fast growing industry of Sport. The course is suitable for school leavers who are seeking employment within the industry and provides a solid basis for progression to further study within this area.

### Sport

#### Level 3 • 1 or 2 years

If you love sport or exercise, want a career in Sport and Leisure, or would like to study a sport related subject at university, this course is ideal for you. You will learn about aspects of sports development, fitness, and coaching, whilst completing industry placements and have access to the FA Level 1 Coaching qualification.

### Sport HNC

#### Level 4 • 1 year

This course is geared towards a career in the fast growing Sports industry. You will develop your knowledge of the theory and application of sport and coaching within sporting environments. You will also assess and evaluate your personal and vocational skills, which are mapped to the requirements of employers in the Sports industry. During this course, you will also enhance your knowledge of the skills and behaviours that underpin Sport to prepare you for further study or employment.

### Sport HND

#### Level 5 • 1 year

This course is usually taken after successful completion of the HNC Level 4 programme and will develop your knowledge even further in Sport.

#### Additional entry requirements for all Sport courses:

To study all Sport courses you must:

- Demonstrate an appropriate level of fitness and sporting ability to take part in practical aspects of the course alongside an enthusiasm to study.

### Football Studies

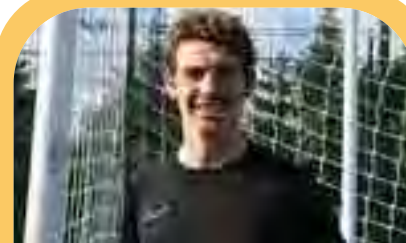
#### Level 3 • 1 or 2 years

This course is suitable for those who value the importance of academic study and training. In essence, it offers an opportunity for you to gain a recognised qualification whilst working on your football ability, strength and conditioning, as well as your football ambitions. The course offers you the chance to be trained by a UEFA licenced coach, on a full time basis, as well as competing at a high level of football.

#### Additional entry requirements:

To study Football Studies Level 3, you must:

- Demonstrate evidence of good football skills and have experience at county/club/ weekend league participation



Chris Squirrel

Course: Sport & Football Academy

At LMC since: 2022

Chris teaches on all Sports programmes and leads on the LMC Football Academy, with the aim to prepare a competitive team for the league championship.

*I would recommend LMC as a fantastic place to study sport and continue your development and interests in football. Your studies link to your football development as much as possible, helping you gain the knowledge, skills and experiences to pursue a career in sport in the future.*

## Overseas travel

Our LMC Football Academy visited Alicante in Spain as part of their course. They trained with coaches from Alicante City Football Club and took part in sessions led by the First Team Manager, with some of their first team players! Alicante City FC academy coaches also led a variety of training sessions.







Proud to work with



# Supported Internships

A Supported Internship is a life-changing employment programme for young people with learning disabilities and autism. Lancaster & Morecambe College, Royal Lancaster Infirmary, HFT, DFN Project SEARCH, and Lancashire County Council have formed a collaborative partnership to give young people with an Educational, Health and Care Plan (EHCP), vital work-based learning opportunities within the Royal Lancaster Infirmary, to help them to secure meaningful, paid employment.

*Your could progress on to...*

- Apprenticeships
- Supported Employment
- Further Study at LMC & more



*Scan here for courses*



2,200+

Supported Interns are  
now employed  
UK wide!\*

\*DFN Project Search

Unit &  
Day



“ It helps you prepare for the world  
of work and is great fun!

Supported Internship student, 2023 ”

## Full Time Courses

Entry Level

See page 20 for entry requirements

## NHS - Supported Internship

### Entry Level • 1 year

The aim of Supported Internships is to support young people with an Education, Health and Care Plan (EHCP) to gain paid employment by:

- Supporting them to develop the skills valued by employers;
- Enabling them to demonstrate their value in the workplace; and
- Developing confidence in their own abilities to perform successfully at work.

### Eligibility

To apply for the Supported Internship, you must:

- Be aged 18-24;
- Have an Education, Health and Care Plan (EHCP);
- Be travel trained or be willing to take part in travel training;
- Have a desire to achieve paid employment of 16 or more hours a week; and
- Behave and dress in a professional manner.



Mike Ferguson

Teaches: Supported Internship

*All you need to start the course is enthusiasm, motivation, energy and determination. As the course progresses, you will develop your employability, personal and social skills, which will enable you to increase your independence and develop your confidence.*



Proud to work with

**Jet2.com**

**SKYPEOPLE**  
TRAINING LTD



# Travel & Tourism

Travel & Tourism at LMC is the starting point to your dream of travelling the world. Students can choose to become Cabin Crew or to explore a variety of careers in the Travel & Tourism industry. Our tutors will use their years of experience in the industry and in depth knowledge of the travel sector to give you all the tools you need to succeed. Your round the world trip starts here!

*your future career could be*

Travel Agent • Specialist Travel Co-ordinator  
Resort Representative • Air Cabin Crew  
Travel Consultant • Travel Administrator  
Retail Travel Advisor & more



Lancashire's travel and tourism industry are **key economic drivers**, with

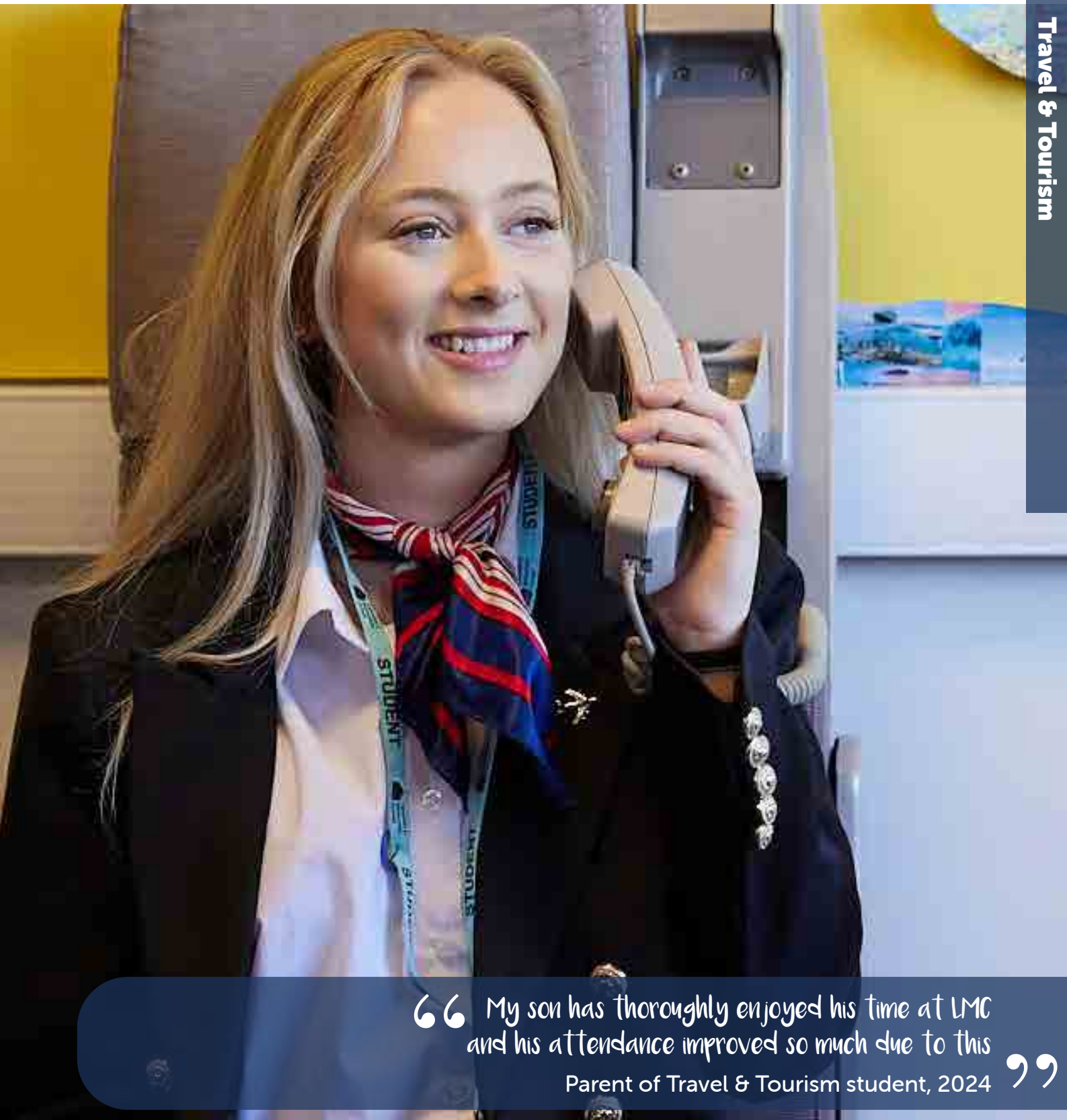
**60,000+ jobs**

supported by  
the sector



*Scan here for  
courses*





“ My son has thoroughly enjoyed his time at LMC and his attendance improved so much due to this  
Parent of Travel & Tourism student, 2024 ”

## Full Time Courses



See page 20 for entry requirements

### Travel & Tourism

#### Level 2 • 1 year

This course will open your horizons to the industry and is full of opportunities. Those wishing to gain detailed knowledge, skills and experience in the tourism sector will thrive on this course. You will gain skills that are current, relevant, and topical, to create a sound foundation for either working in the industry or progressing onto the Level 3 course.

### Travel & Tourism

#### Level 3 • 1 year

Level 3 Travel & Tourism is the perfect gateway into the exciting industry. It is a great choice if you are looking for an exciting role, which could take you around the world. You will gain an insight into all relevant sectors of the industry and our expert tutors will teach you the necessary skills to prepare you for life in the profession.

### Air Cabin Crew

#### Level 2 • 1 year

This exciting qualification is designed to assist you in finding their first role working in Cabin Crew. The role of Cabin Crew Team Member is a diverse, social and well-travelled career that is popular among our students. The course is designed for those who want broad-based vocational preparation for employment in a Cabin Crew role, and covers everything from preparing you for interview days, practical elements working inside the cabin, and first-hand experience from ex Cabin Crew tutors.

#### Additional entry requirements:

To study this course you must:

- Be 17 or over

To be an Air Cabin Crew member, you must:

- Be at least 5'2"



## Cancun, Mexico trip

This year, our Travel & Tourism and Cabin Crew students experienced a once in a lifetime visit to Cancun, Mexico.

The students are taking part in work placements, trying out various roles within a fully functioning beach hotel. During this experience, they are interacting with guests from all over the world and gaining valuable communication skills that they can carry through into their future careers.

They've also had the chance to explore the area, visiting local restaurants and beaches. They visited a Mayan Village and learnt all about Mayan culture, and even got a blessing from their Shaman.

## A workplace trip

Our Travel & Tourism students visited World Travel Holdings UK to learn more about the travel industry. The trip exposed them to various roles and responsibilities such as sales, product and commercial, marketing and training. They learned about the specific skills and qualities required to work in these areas.







Proud to work with



# Uniformed Protective Services

Public Services at LMC provides a range of experiences that demonstrate the scale and diversity of uniformed services. You'll have the opportunity to engage with a wide range of services and explore this exciting sector. Our courses are delivered by highly qualified, industry specialist tutors with knowledge across all key areas and the supporting infrastructure.

*your future career could be*

Army Soldier • Police Officer  
RAF Officer • Border Force Officer  
Prison Officer • Firefighter • Coastguard  
Royal Marines Commando & more





## Time-served tutors

Tutor Danny was a Captain in the **Army Reserves** and Nick is **ex-RAF**



Scan here for courses



“

I'm very satisfied with my son's experience at LMC because the tutors are very friendly and supportive

Parent of Uniformed Protective Services student, 2024

”

## Full Time Courses



See page 20 for entry requirements

### Sports & Public Services Pathway

#### Level 1 • 1 year

All Pathway courses at LMC provide you with a positive foundation into studying at College.

This course has been designed to support students who want to gain a basic knowledge in Public Services and who may not have the mainstream entry requirements for other courses.

### Public Services

#### Level 2 • 1 year

This course is aimed at those who wish to pursue a career in one of Britain's Uniformed Public Services including the: Army, Royal Navy, Royal Air Force, Police, Prison Service and Fire and Rescue Service.

### Uniformed Protected Services

#### Level 3 • 2 years

This course is aimed at those who are looking to gain entry into the Uniformed Protected Services, or Higher Education courses in the area. Throughout your time on the course, you'll speak to external speakers from different services and develop your understanding of service behaviour and requirements, alongside working towards fitness requirements.

### Public Services HNC

#### Level 4 • 1 year

This course is geared towards a career in the varied and challenging Uniformed Protective and Public Services. You will develop your knowledge of public policies and how they are practically applied in UK Public Services.

You will also enhance your knowledge on the standards and behaviours that underpin public service organisations, which will prepare you for further study or employment. Engaging with LMC's network of industry professionals will allow you to build your own network of contacts in the public sector and enhance your employability skills.

## Melissa Butcher

Melissa always knew she wanted to work in the forces in some shape or form. After completing the HND course, Melissa progressed to UCLAN where she was able to achieve a degree. She is currently employed by HM Prison Service as a Prison Officer and absolutely loves her profession.

While she studied at LMC, Melissa learnt key skills such as how to communicate and leadership skills, something she carries with her today. Learning with LMC pushed Melissa out of her comfort zone and gave her great experiences of working with others and taking leadership roles within groups, which she now uses in her current occupation while being a positive role model.

*I deal with prisoners on a daily basis, helping aid rehabilitation and reduce reoffending. I maintain good order of the prison and help keep the public safe*

Melissa recently took her confidence and communication skills to the next level when she entered into the Miss England competition for 2024 to raise awareness of gender stereotypes, body dysmorphia and body positivity.

*People often say to me 'you don't look like a prison officer' and I want to show that you don't have to look a certain way to do this career. I am hoping that taking part in the Miss England competition will help me to breakdown the stereotypes, and inspire young women to take the risk, and take this career path, and come out of your comfort zone.*



**Courses:** Level 3 Public Services, Level 5 HND Public Services

**Profession:** Prison Officer



## Regular external visitors on-site

Our students get regular visits from external visitors in the shape of army officials, army reserves and professional uniformed services to showcase the real world of work and what it entails.

Last year, LMC took part in and hosted the Inter College Skills Competition for Uniformed Services alongside Preston College, Kendal College and Blackpool and The Fylde College. The groups took part in mental and leadership activities, memory challenges, reaction based tasks and communication activities.



# 200 Years of LMC

In July 2024, Lancaster & Morecambe College celebrated **200 years of continuous technical education** provision in the local area. The roots of LMC can be traced directly back to the founding of the **Library and Mechanics' Institute in 1824**, which, after several moves, eventually settled in the Storey Institute on Meeting House Lane. We are justifiably proud of these roots, and how the College has since continued to evolve a high standard of technical education relevant to our local employers and community, and to the continually changing times they have seen. We moved to the current site on **Morecambe Road in 1963**, and the new College was officially opened by **HRH The Duke of Edinburgh**.

We marked our bicentenary by commissioning local artist **Chas Jacobs** to create a piece of artwork, which is now displayed on campus in our new courtyard. Below is a brief **LMC timeline** of our history, incorporating the local and national events, this too is also displayed in our new outdoor courtyard area.

1824	1849	1874	1899	1924				
<b>1824</b> Library & Mechanics' Institute first established in Mary Street, Lancaster	<b>1831</b> Institute moves its premises three times: Penny Street; Sun Street; Freemasons' Hall in Brock Street	<b>1850</b> <b>1855-56</b> Mechanics' Institute moved to Storey Institute site and opened as the Technical School of Mechanics' Institute	<b>1860</b> Church of England Instruction Society was incorporated	<b>1866-67</b> Lecture Hall built alongside the School of Science established; and the Mechanics' Institute handed over to Sir Thomas Storey, who engineered the formation of the Morecambe Mechanics' Institute	<b>1891</b> The premises was completely rebuilt and opened as the Storey Institute	<b>1909</b> The Storey Institute premises was enlarged with addition of an art gallery and library	<b>1919-20</b> Junior Technical School established for boys wanting to enter various trades and the Lancaster Technical College is officially adopted	LMC TIMELINE
<b>1826</b> The Judges Lodgings, Lancaster (built c1625) became lodgings for the travelling 'Red Judges' of the Assizes Courts	<b>1837</b> Atkinsons Coffee Roasters of Lancaster established as 'The Grasshopper Tea Warehouse'	<b>1865</b> The last public hanging at Lancaster Castle (thereafter executions were performed privately inside the castle)	<b>1867</b> The two member Lancaster parliamentary constituency was disenfranchised in 1867 for corruption	<b>1885</b> Lancaster parliamentary representation restored as a one member constituency	<b>1907</b> Morecambe Promenade Station built by the Midland Railway Company	<b>1910</b> The last execution took place inside Lancaster Castle	<b>1923</b> Lancaster Museum founded	LOCAL
<b>1824</b> RNLI founded	<b>1837</b> Victoria accedes to the throne	<b>1840</b> Industrial Revolution ended (Began in 1760)	<b>1880-81</b> 1st Boer War	<b>1899-1902</b> 2nd Boer War	<b>1901</b> Death of Victoria; accession of Edward VII	<b>1910</b> Death of Edward VII and accession of George V	<b>1914-18</b> 1st World War	NATIONAL



1930	1949	1960	1975	2024						
<b>1931</b> The old Lune Valley Engineering workshop was purchased as an annexe to develop workshop practice	<b>1940-43</b> Junior Technical School doubled in size and the Junior Commercial School for Girls established	<b>1948</b> Morecambe Evening Institute (formerly Mechanics' Institute formed 1867) was incorporated and board of governors established for the whole college	<b>1950-51</b> The council session formally establish the Lancaster & Morecambe College of Further Education	<b>1956-62</b> First two building phases of the new college site on Morecambe Road completed, included Blocks A, B, C and the Lecture Theatre	<b>1963</b> 5 July this year saw the official opening of Lancaster & Morecambe College by HRH Prince Philip, Duke of Edinburgh	<b>1976-80</b> Campus redeveloped adding D block and E block	<b>2001-02</b> Campus redeveloped further adding K block and S block	<b>2013-14</b> Campus redeveloped adding F block, expanding The Hex and the Employer Hub	<b>2024</b> Bicentenary celebrations to celebrate 200 years of continuous technical education in the local area	LMC TIMELINE
<b>1933</b> Midland Hotel Morecambe built, with Eric Gill & Eric Ravilious modernist interior	<b>1960</b> The Lancaster bypass on the M6 (UK's 2nd motorway) opened	<b>1964</b> Lancaster University and St Martin's College founded	<b>2007</b> University of Cumbria formed	<b>2016</b> The Bay Gateway, Heysham to M6 link road opened	LOCAL					
<b>1936</b> Death of George V; abdication of Edward VIII; accession of George VI	<b>1939-45</b> 2nd World War	<b>1952</b> Death of George VI; accession of Elizabeth II	<b>1965</b> Death and state funeral of Sir Winston Churchill	<b>1982</b> Falklands War	<b>2023</b> Death and state funeral of Elizabeth II; accession of Charles III	NATIONAL				



“Thanks to this course, I'm one step closer to my chosen career and have met some like-minded people!”

“Going to college was the best choice I ever made. I have made so many friends, learnt new skills and it is just a pleasant experience over all!”

#### **Disclaimer**

Lancaster & Morecambe College has published all information about the courses it intends to offer in good faith and warrants that classes will be delivered with reasonable care and skill. The College reserves the right to cancel any class and vary the time, location, direction and content of any class it provides and the associated fees.

Lancaster & Morecambe College hereby expressly excludes liability for any indirect or consequential loss arising from its actions and limits compensation to a maximum of a full refund of any fees paid or the offer of a class of equivalent value.

#### **Data Protection**

The College will hold and use the information you have provided on your application or enquiry to inform you about studying at LMC. Your details will be retained until the autumn of your intended year of study or for two years if you are in year 10 at school. Your personal data will not be passed on to any third parties for marketing purposes. You can tell the College that you no longer wish to receive information from us by emailing us at [hello@lmc.ac.uk](mailto:hello@lmc.ac.uk) or calling us on **0800 306 306**. To access the College's privacy notice about the use of students' personal data, please visit the College website: [lmc.ac.uk](http://lmc.ac.uk) and go to LMC Privacy Notice [lmc.ac.uk/about/college-policies/lmc-general-privacy-notice](http://lmc.ac.uk/about/college-policies/lmc-general-privacy-notice).



Lancaster &  
Morecambe  
College

Celebrating 200 Years of Learning



## OPEN DAYS

**HE Fair & Open Evening** Tuesday 15 October • 4.30pm-7pm

**Open Evening featuring T Levels** Wednesday 4 December • 4.30pm-7pm

**Apprenticeship & Employer Event** Tuesday 11 February • 4.30pm-7pm

**LMC Open Evening** Wednesday 30 April • 4.30pm-7pm

**LMC Community Open Day** Saturday 28 June • 11am-3pm

**Summer Open Day** Thursday 21 August • 9am-4pm

Lancaster & Morecambe College, Morecambe Road, Lancaster LA1 2TY

[hello@lmc.ac.uk](mailto:hello@lmc.ac.uk) • [lmc.ac.uk](http://lmc.ac.uk) • 0800 306 306

